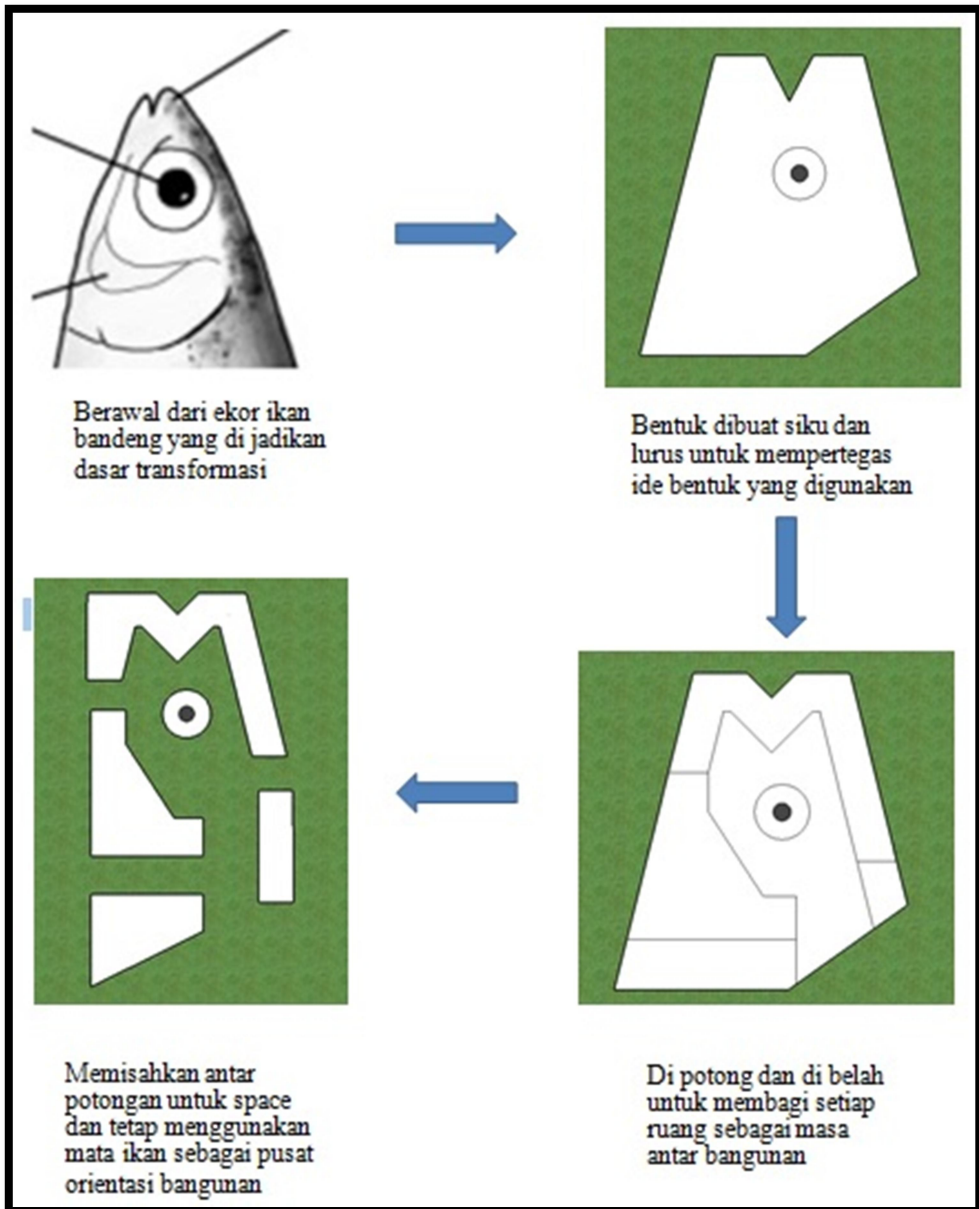
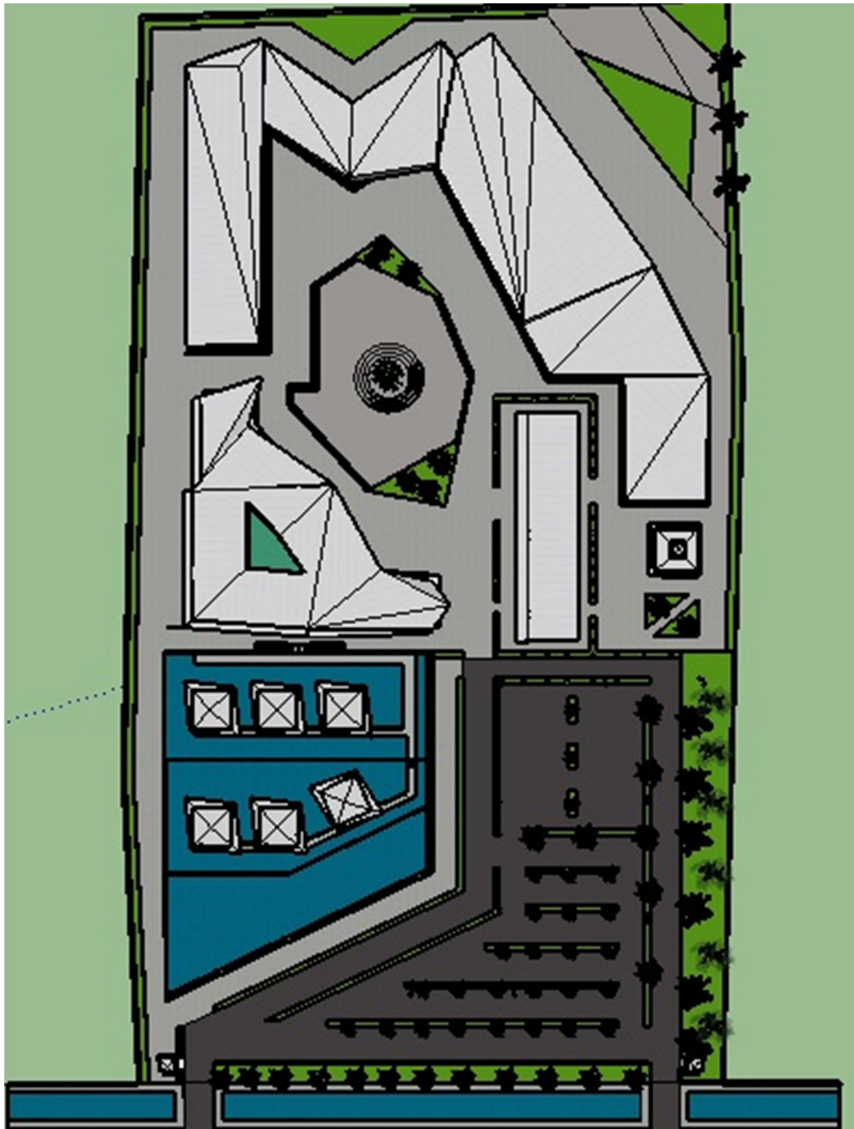


## LAMPIRAN

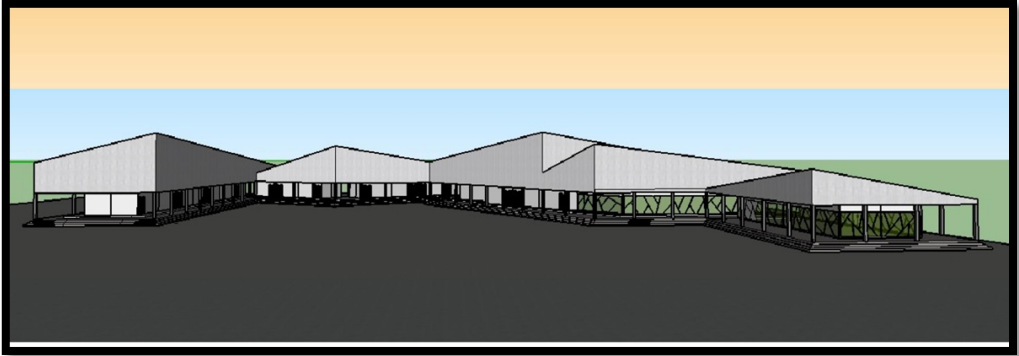
### Transformasi Bentuk

Desain fasilitas pelatihan mengambil ide bentuk dari kepala ikan bandeng yang menjadi objek dalam pelatihan perikanan.





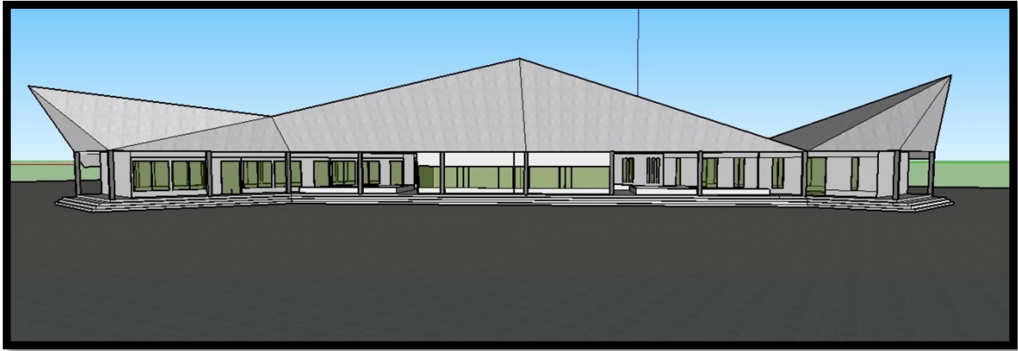
*Hasil akhir dari proses transformasi yang telah di fungsikan antar masa dan fungsi masa setiap bangunan*



*Gambar 5.1 Tampak Depan Asrama ( Sumber : Analisis Penulis )*



*Gambar 5.2 Tampak Belakang Asrama ( Sumber : Analisis Penulis )*



*Gambar 5.3 Tampak Depan Kelas Pelatihan  
( Sumber : Analisis Penulis )*



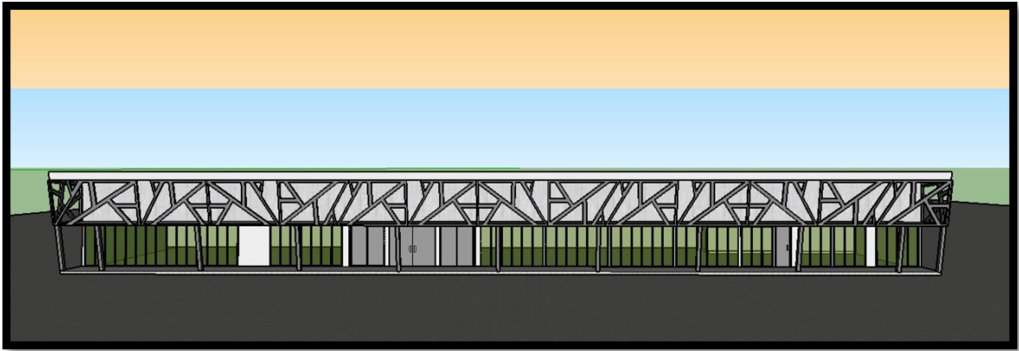
*Gambar 5.4 Tampak Belakang Kelas Pelatihan  
( Sumber : Analisis Penulis )*



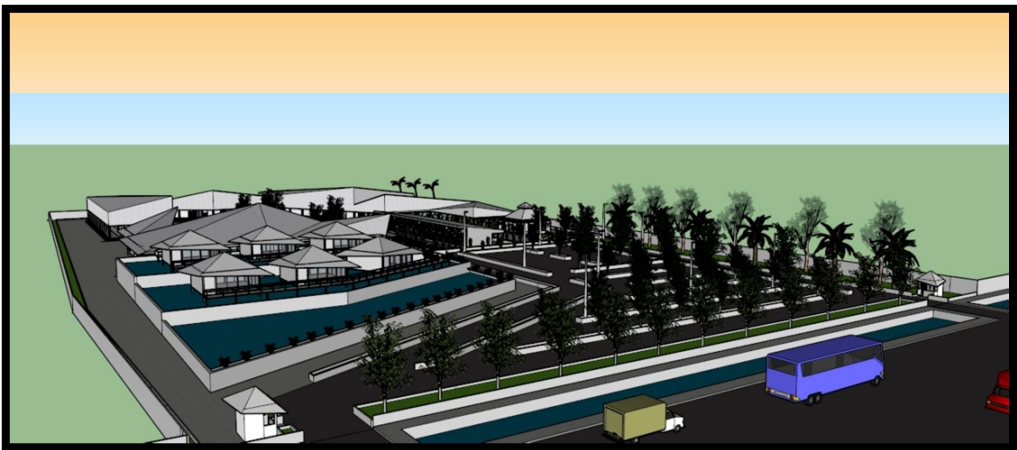
*Gambar 5.5 Tampak Depan Kolam Percontohan dan Kelas Praktek  
( Sumber : Analisis Penulis )*



*Gambar 5.6 Tampak Belakang Kolam Percontohan dan Kelas Praktek  
( Sumber : Analisis Penulis )*



*Gambar 5.7 Tampak Depan Ruang Pengelola  
( Sumber : Analisis Penulis )*



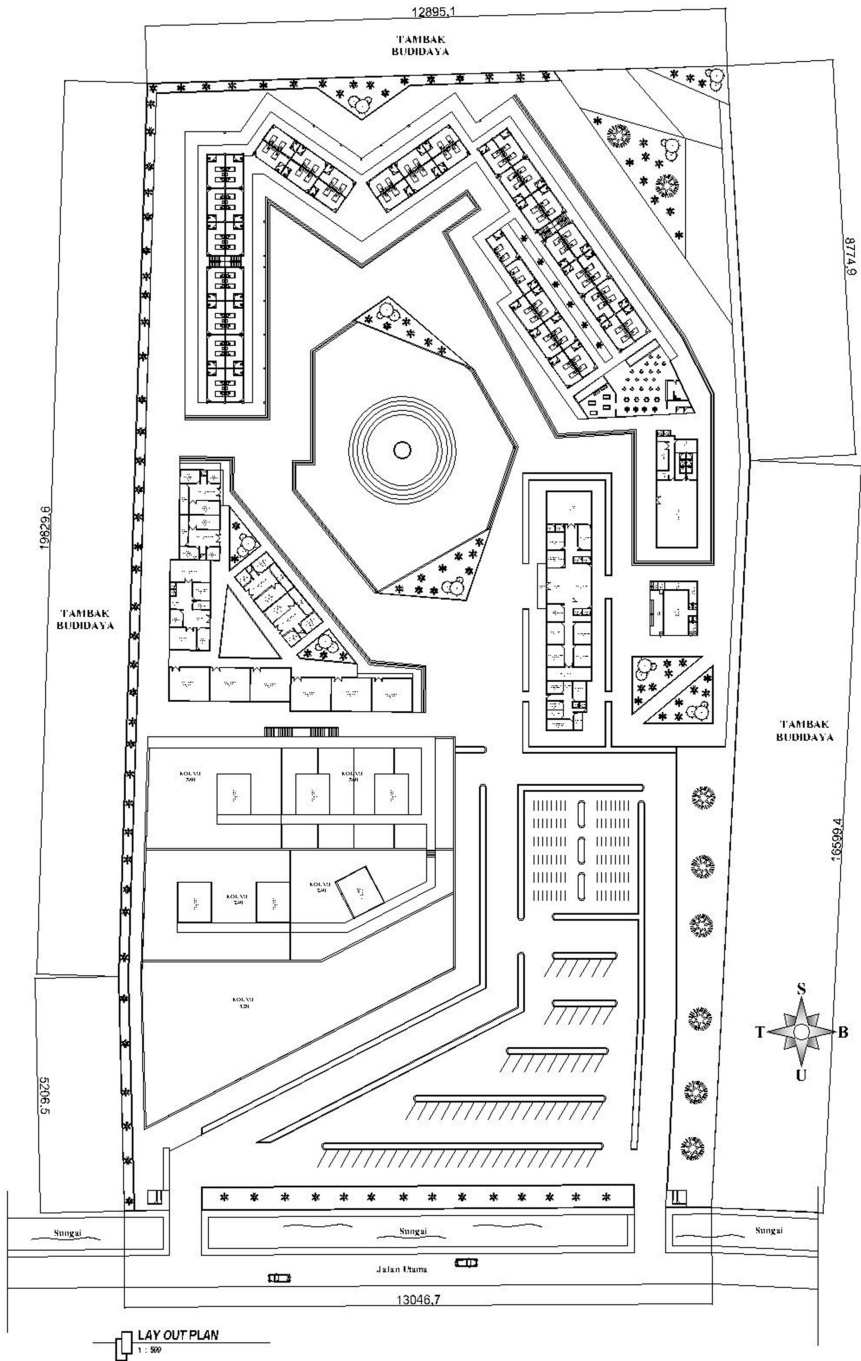
*Gambar 5.8 Tampak Depan Kawasan pelatihan  
( Sumber : Analisis Penulis )*



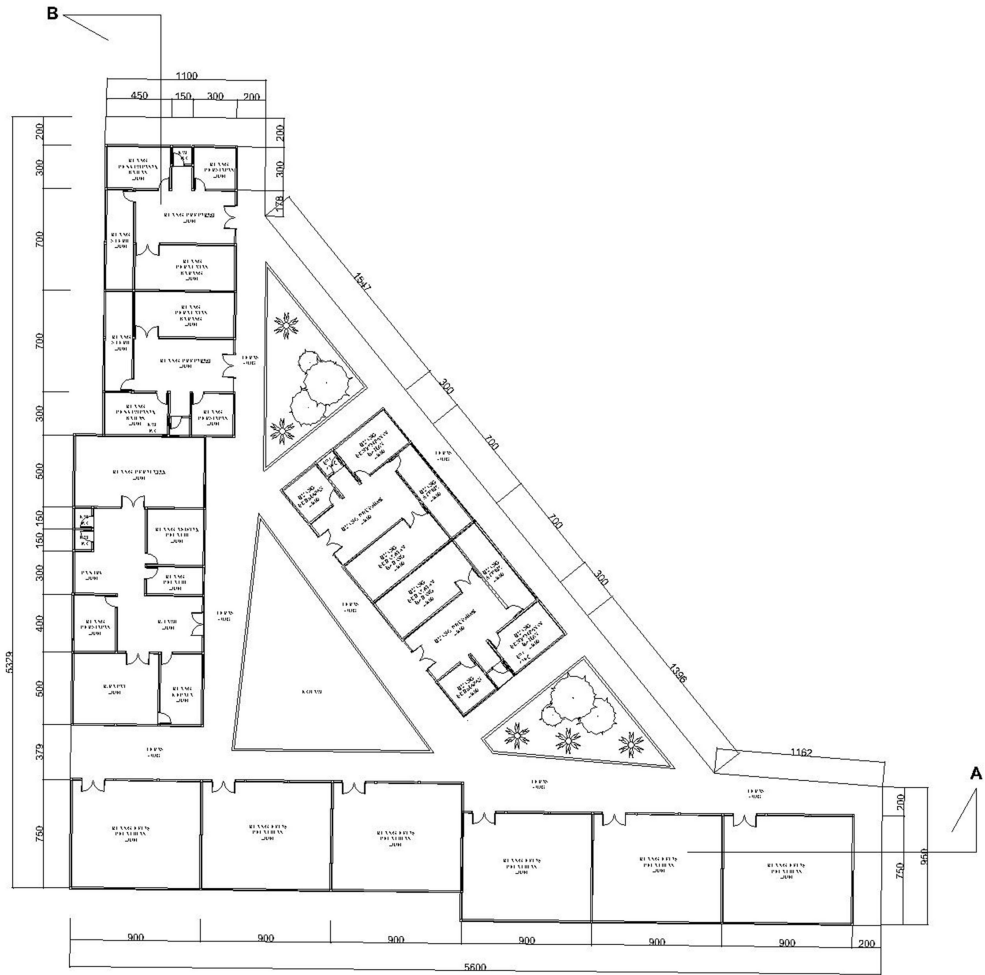
*Gambar 5.9 Tampak Pusat Orientasi ( Sumber : Analisis Penulis )*



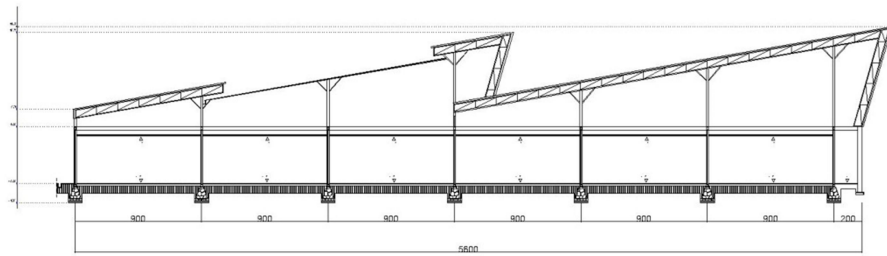
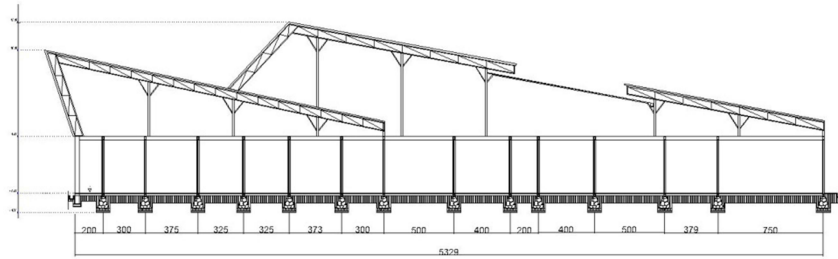
*Gambar 5.10 Tampak Pusat orientasi ( Sumber : Analisis Penulis )*

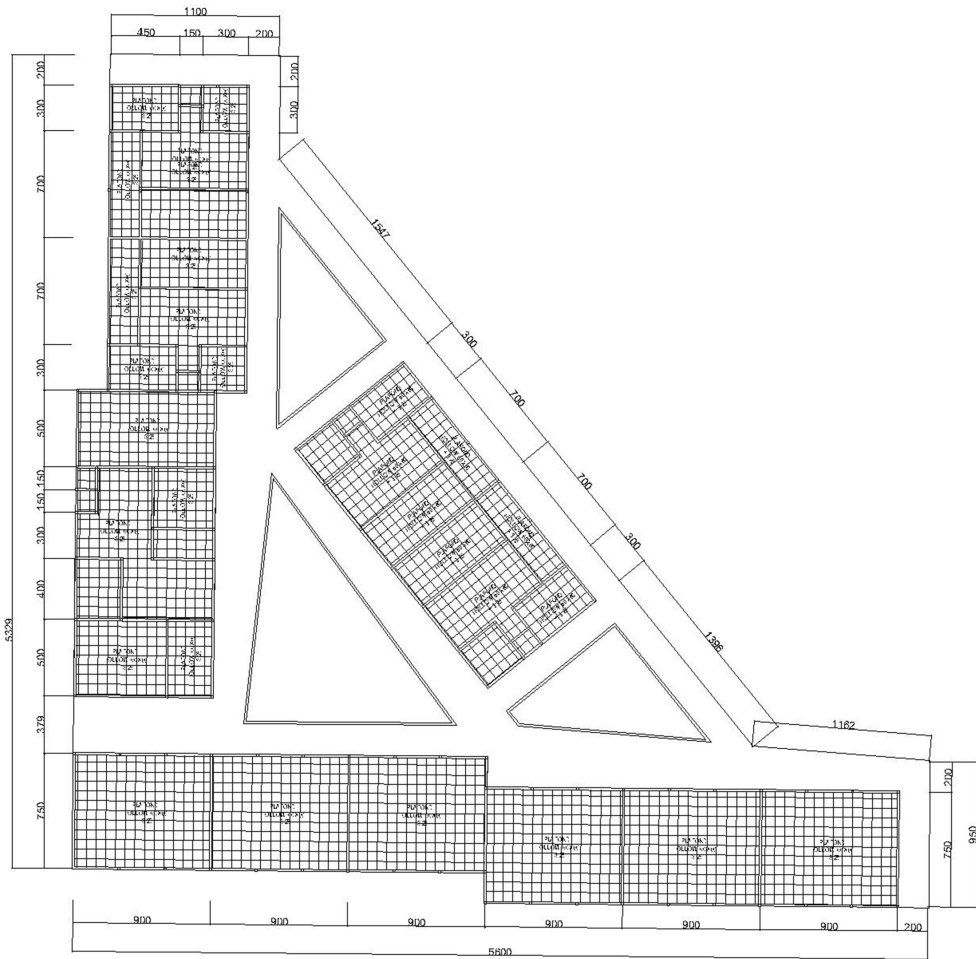




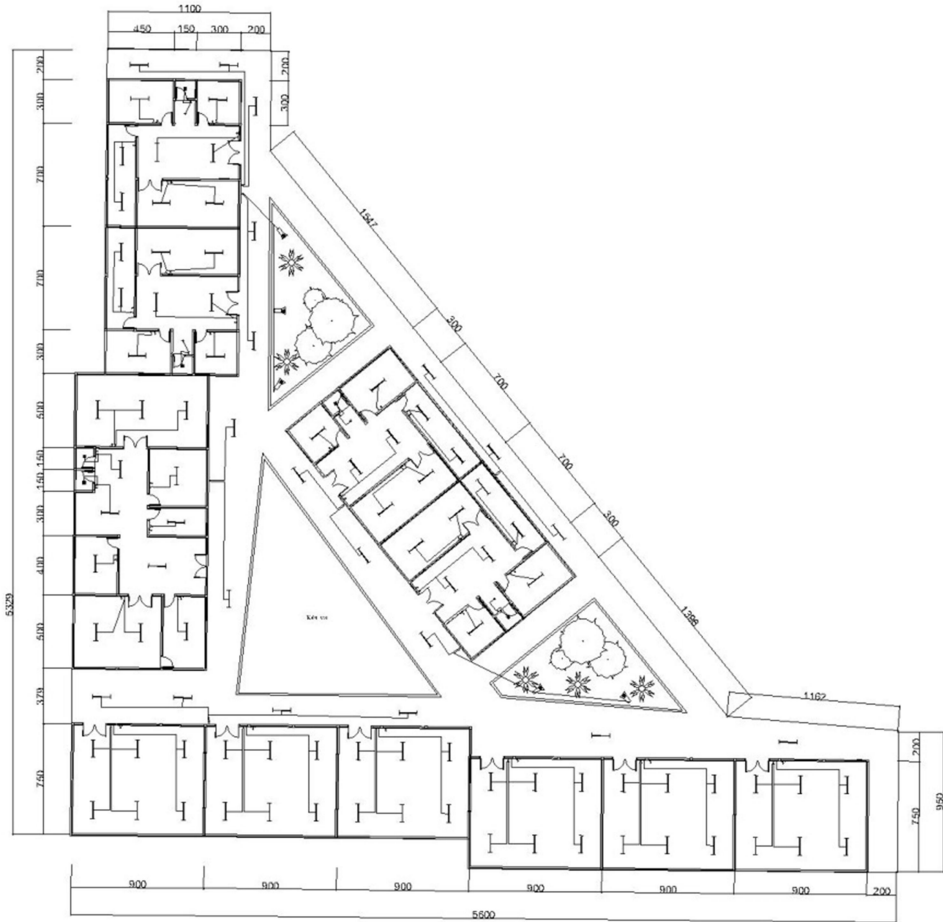


**RENCANA DENAH PELATIHAN**  
**SKALA 1 : 150**

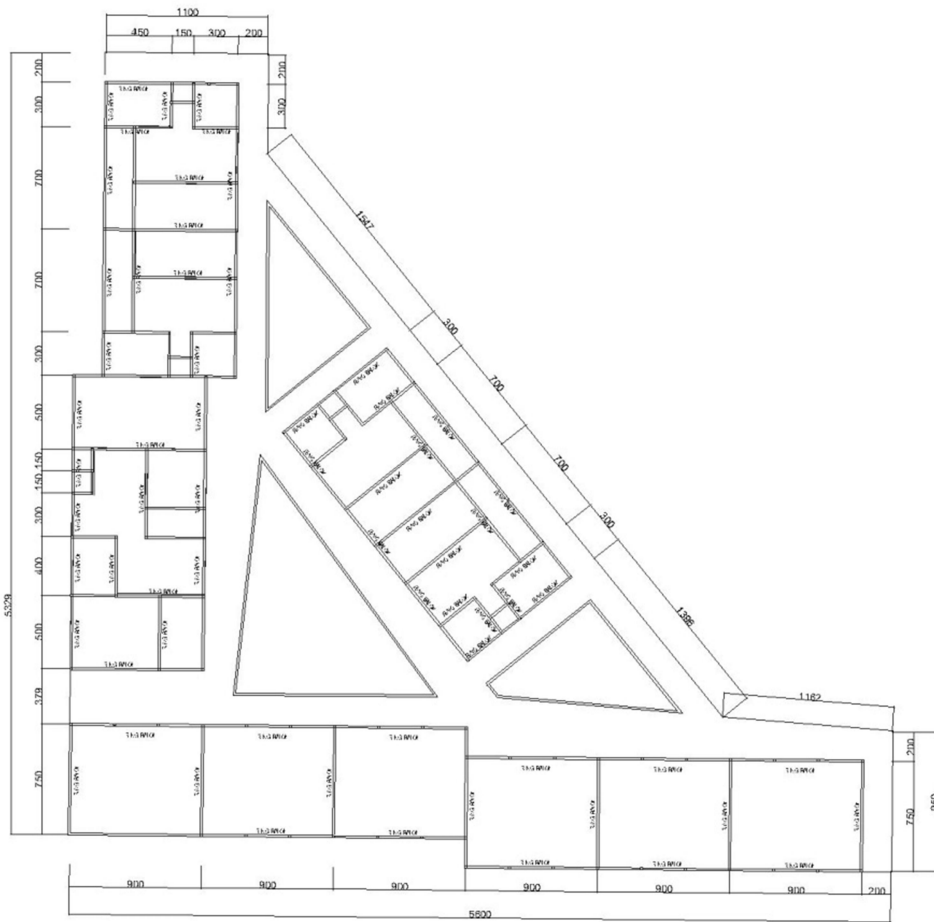




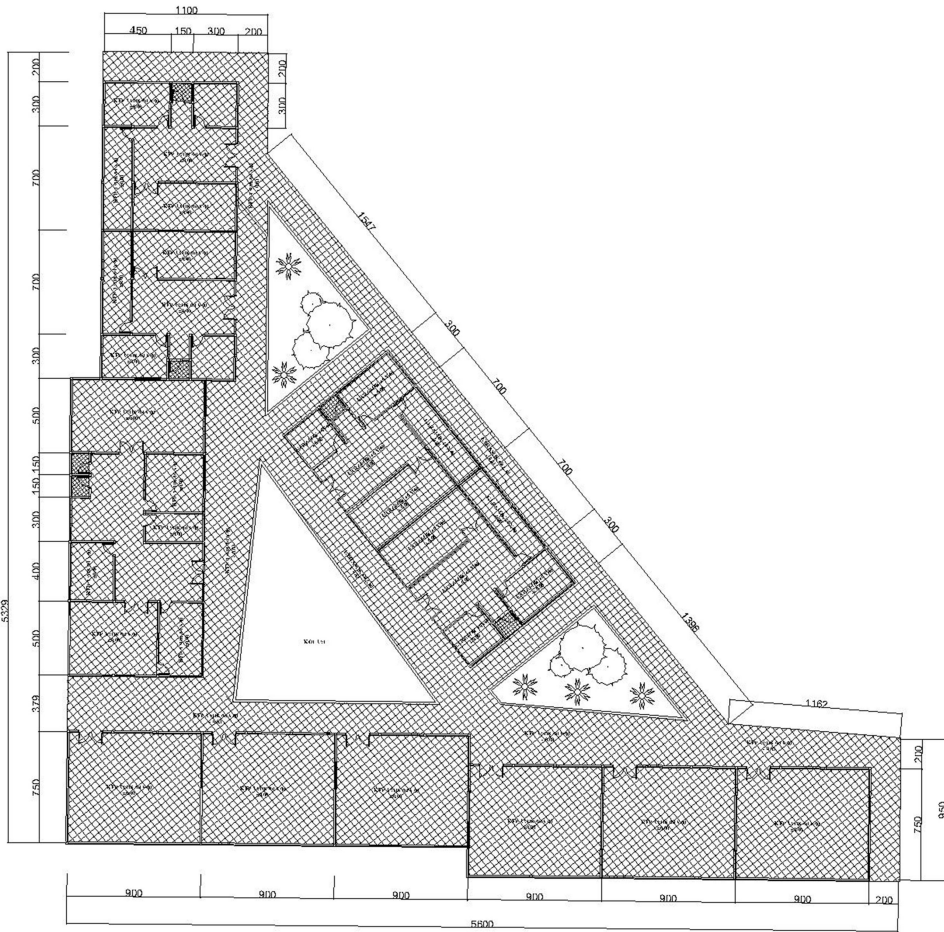
**RENCANA PLAFOND**  
SKALA 1 : 150



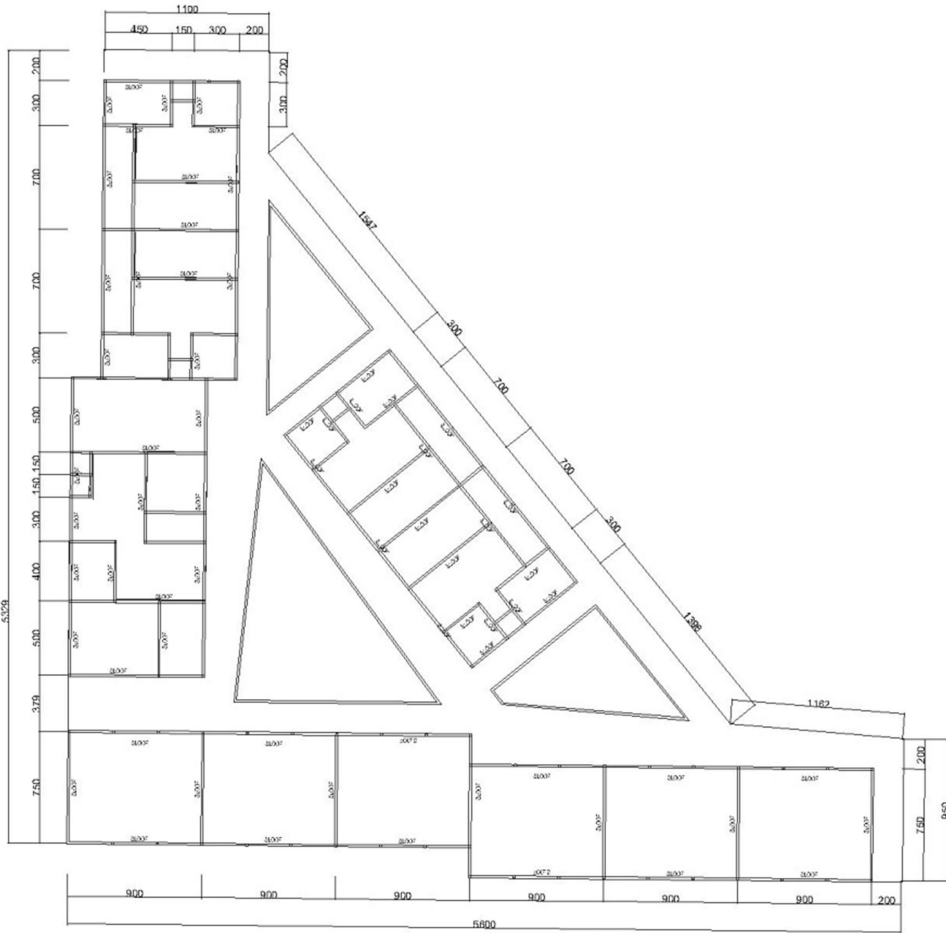
RENCANA INTALASI LISTRIK  
SKALA 1 : 150



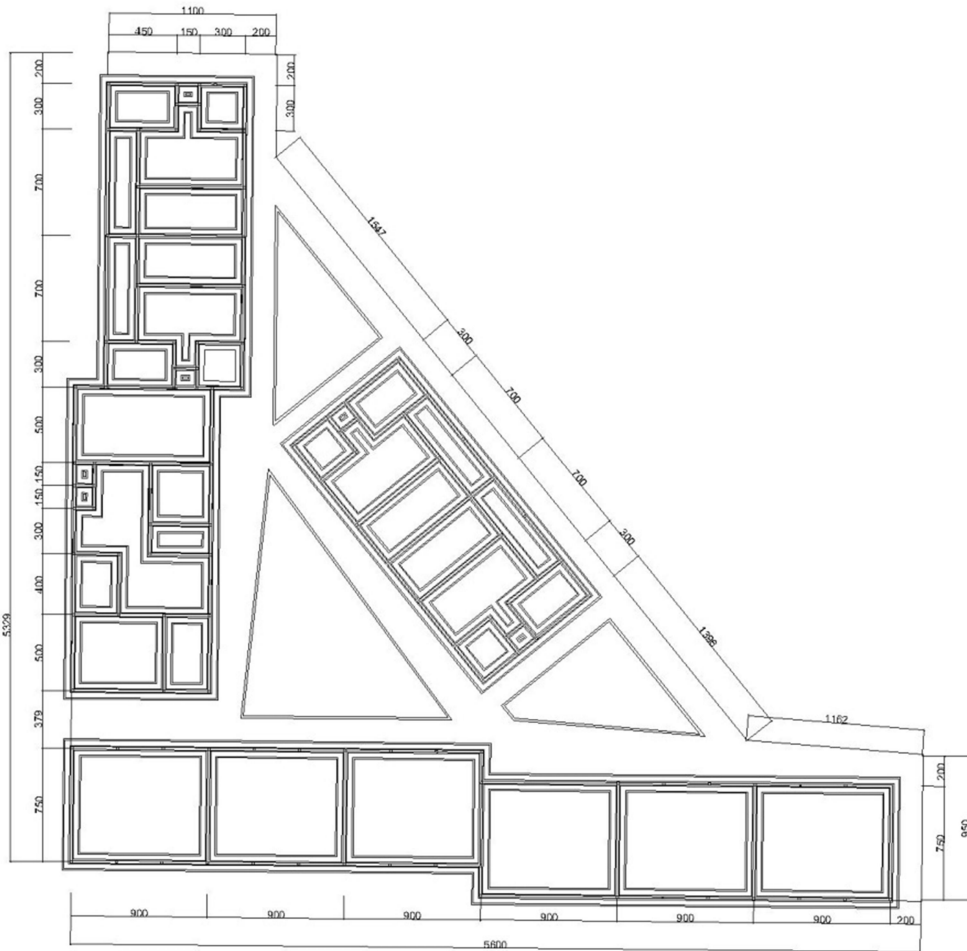
**RENCANA RINGBALOK**  
 SKALA 1 : 150



RENCANA KERAMIK  
SKALA 1 : 100

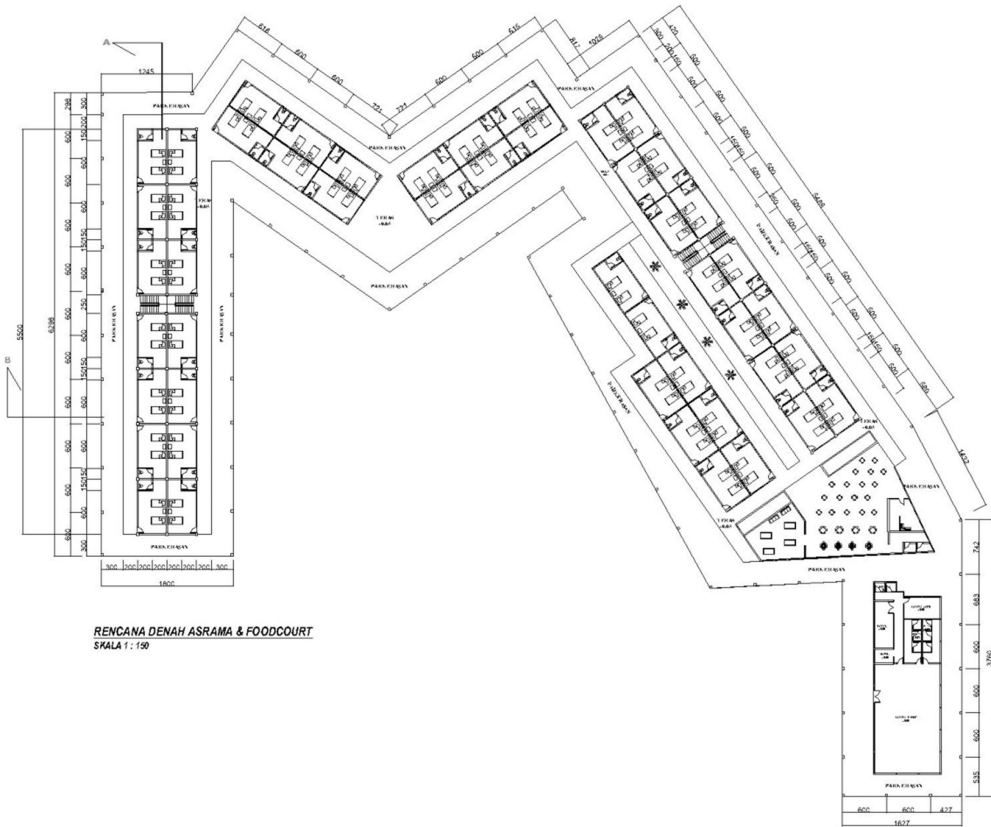


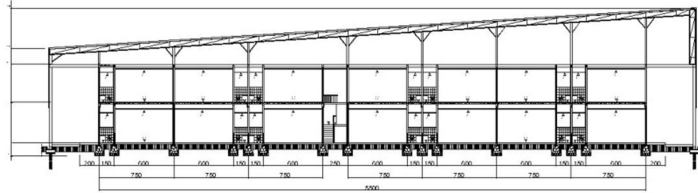
RENCANA SLOOF  
SKALA 1 : 100



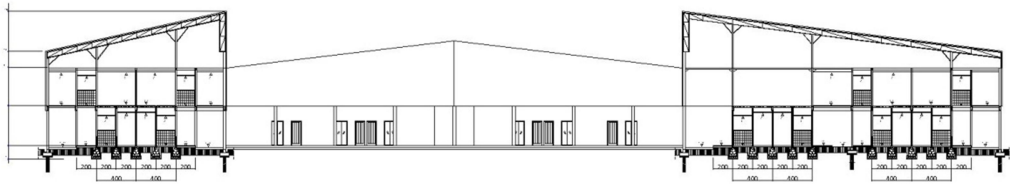
**RENCANA PONDAS**  
 SKALA 1 : 100



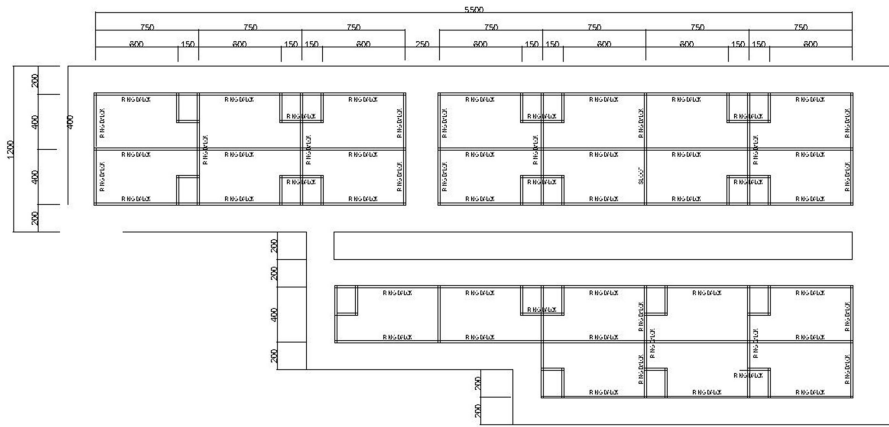




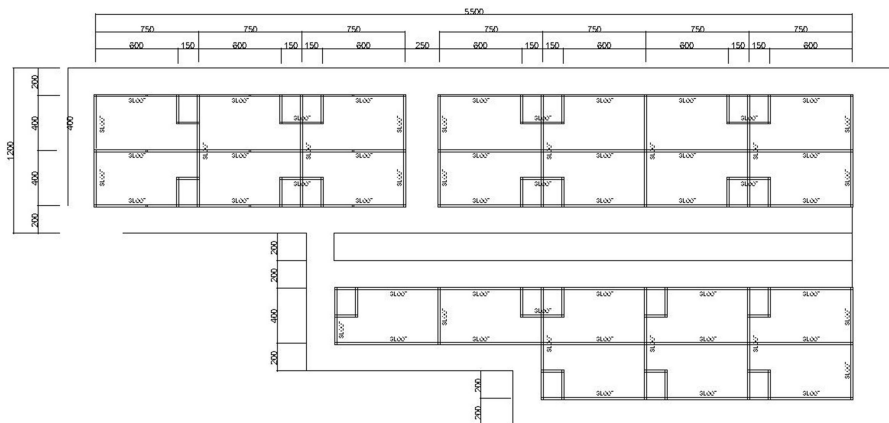
POTONGAN A - A  
SKALA 1 : 150



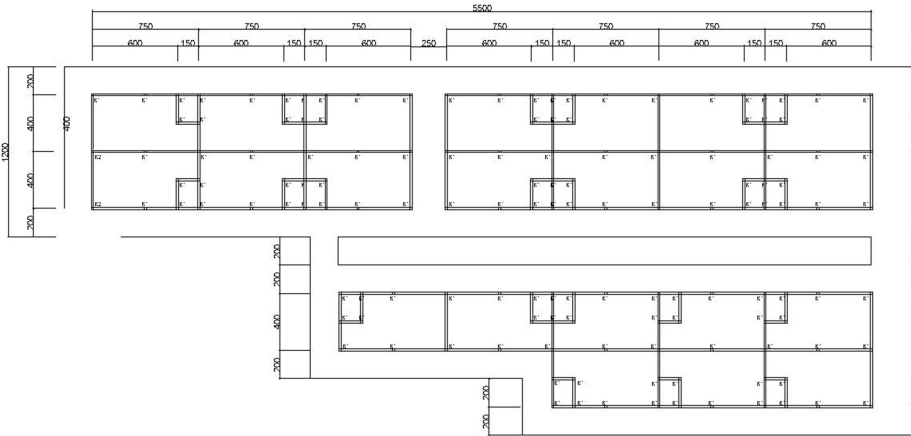
POTONGAN B - B  
SKALA 1 : 150



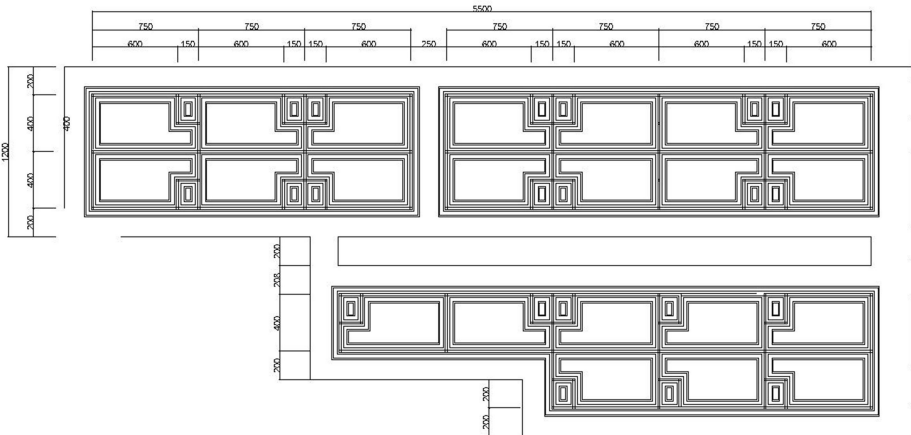
**RENCANA RING BALOK**  
SKALA 1 : 150



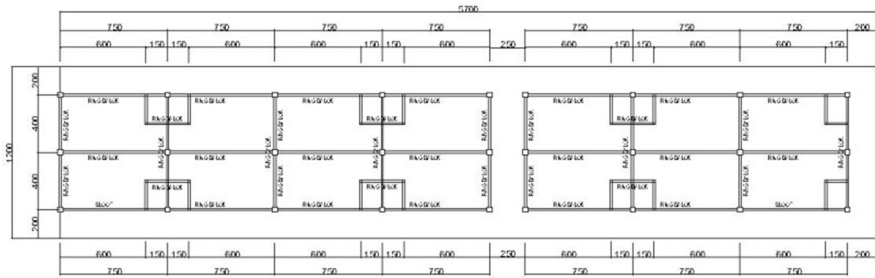
**RENCANA SLOOF**  
SKALA 1 : 150



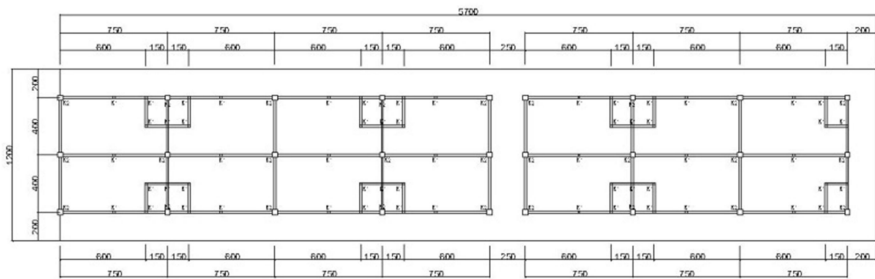
**RENCANA KOLOM**  
SKALA 1 : 150



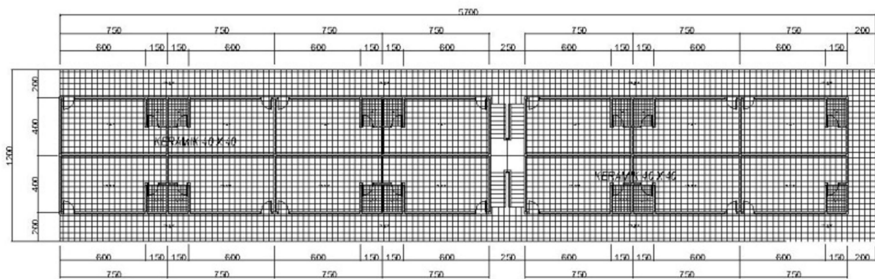
**RENCANA PONDASI**  
SKALA 1 : 150



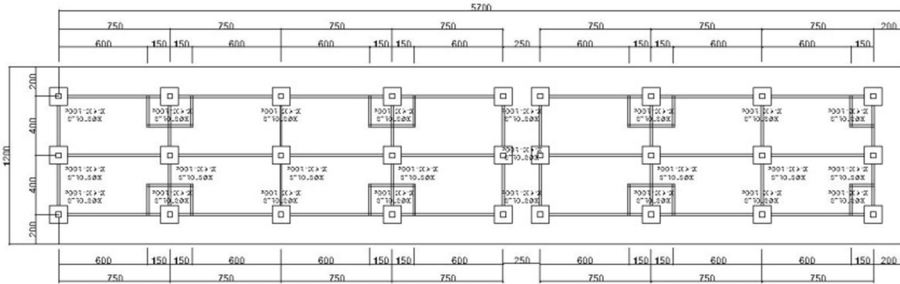
**RENCANA SLOOF**  
SKALA 1 : 150



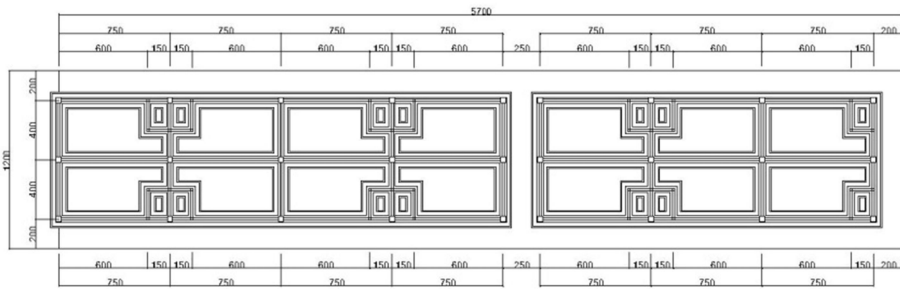
**RENCANA KOLOM**  
SKALA 1 : 150



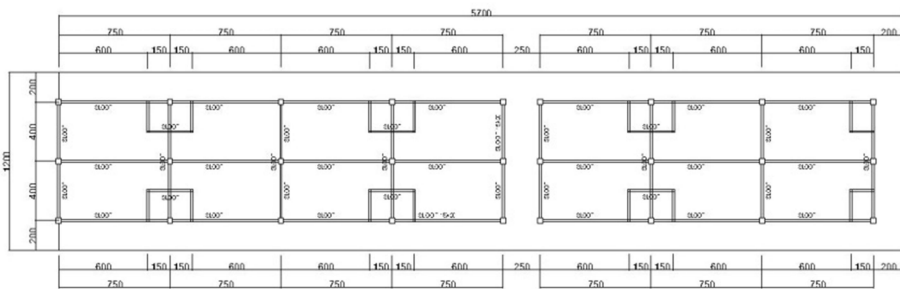
**RENCANA KERAMIK**  
SKALA 1 : 150



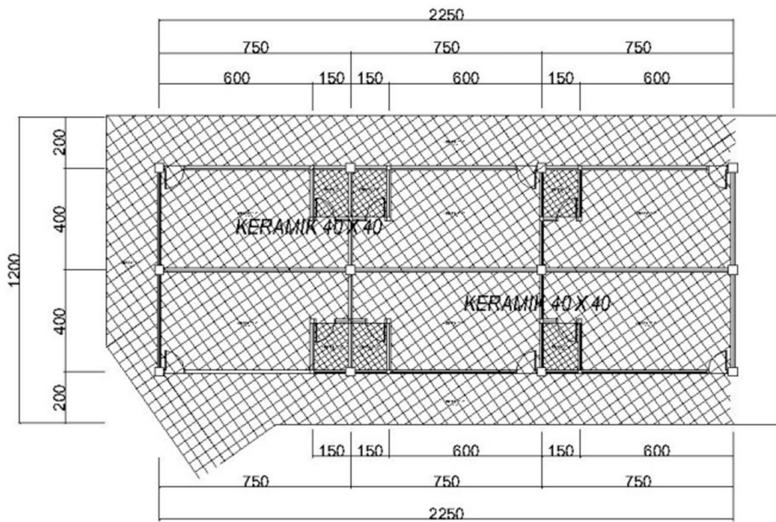
**RENCANA POOR DAN STROUS**  
SKALA 1 : 150



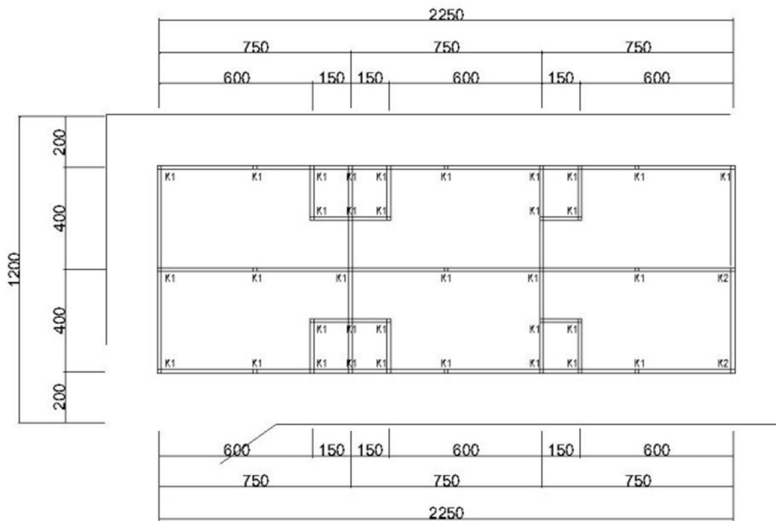
**RENCANA PONDASI**  
SKALA 1 : 150



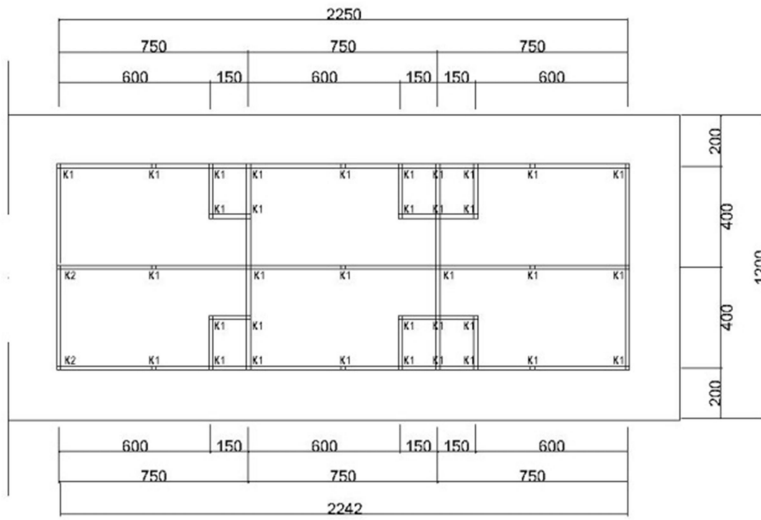
**RENCANA SLOOF**  
SKALA 1 : 150



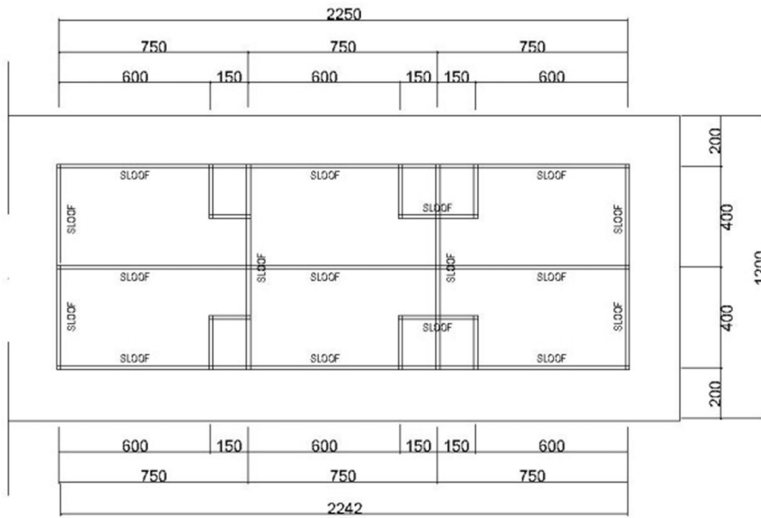
**RENCANA KERAMIK**  
SKALA 1 : 150



**RENCANA KOLOM**  
SKALA 1 : 150

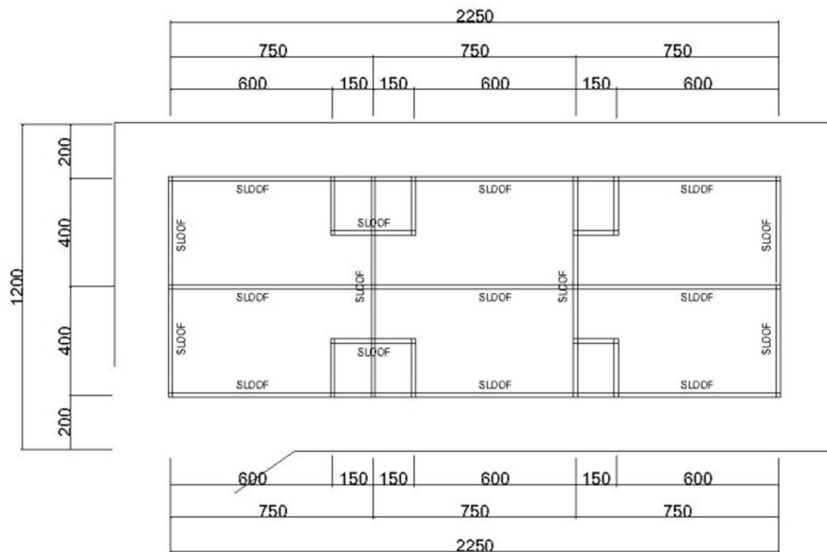


**RENCANA KOLOM**  
SKALA 1 : 150

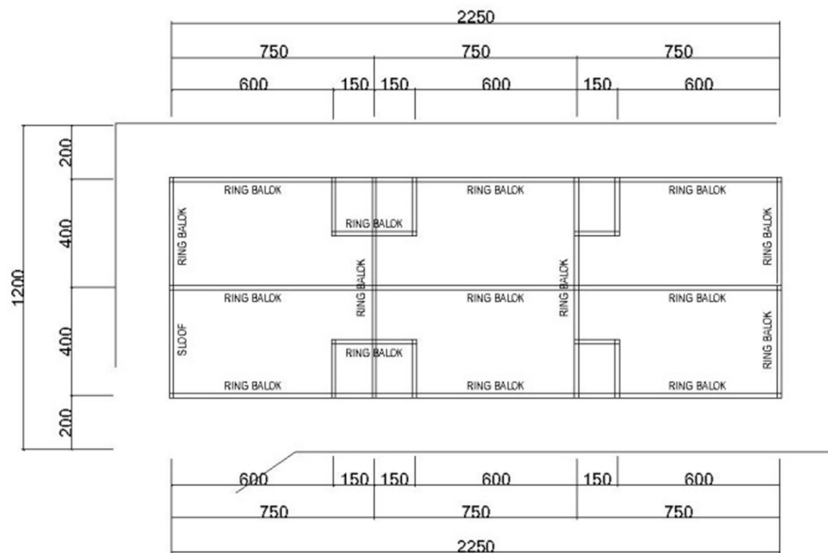


**RENCANA SLOOF**  
SKALA 1 : 150

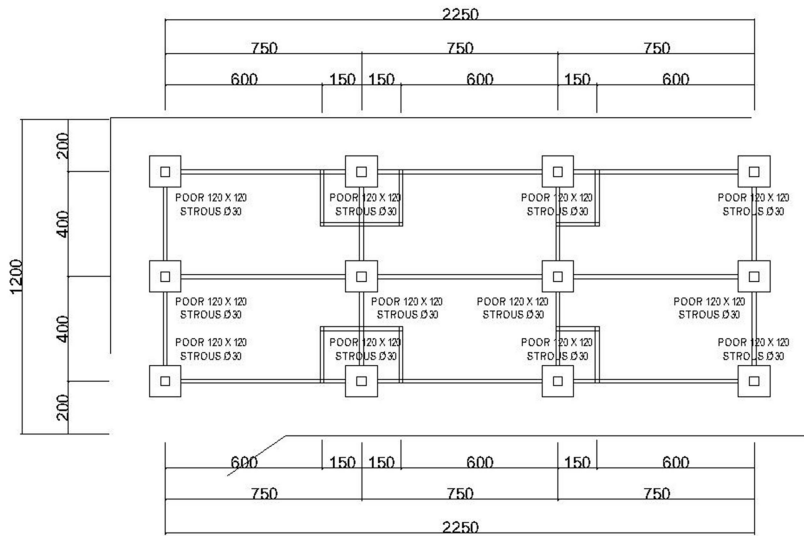




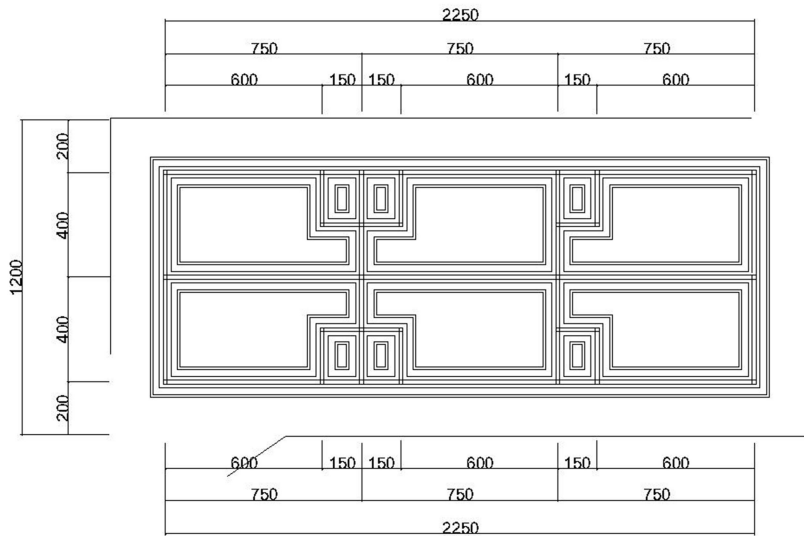
**RENCANA SLOOF**  
SKALA 1 : 150



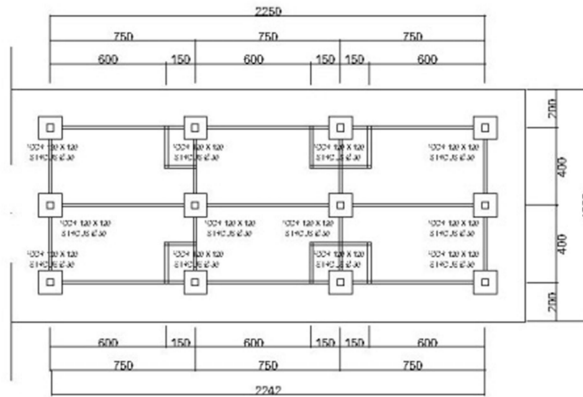
**RENCANA RING BALOK**  
SKALA 1 : 150



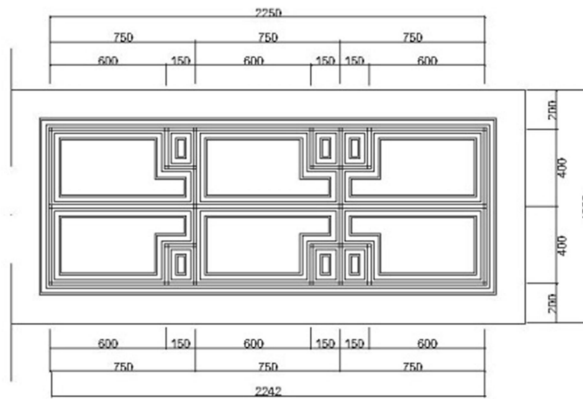
**RENCANA POOR DAN STROUS**  
 SKALA 1 : 150



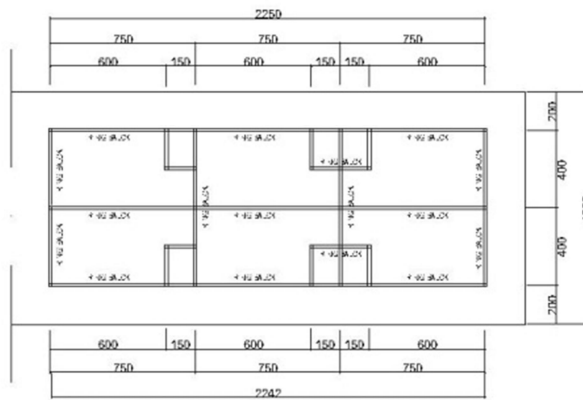
**RENCANA PONDASI**  
 SKALA 1 : 150



**RENCANA POOR DAN STROUS**  
SKALA 1 : 150

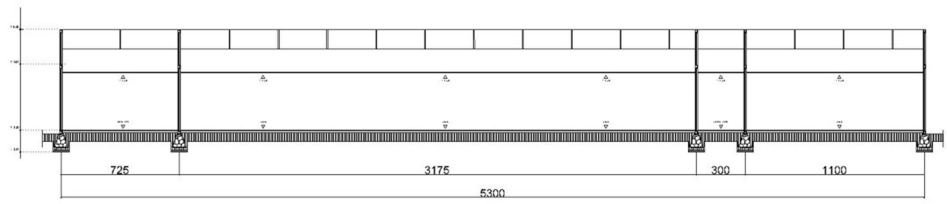


**RENCANA PONDASI**  
SKALA 1 : 150

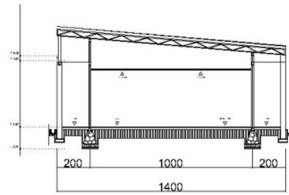


**RENCANA RING BALOK**  
SKALA 1 : 150

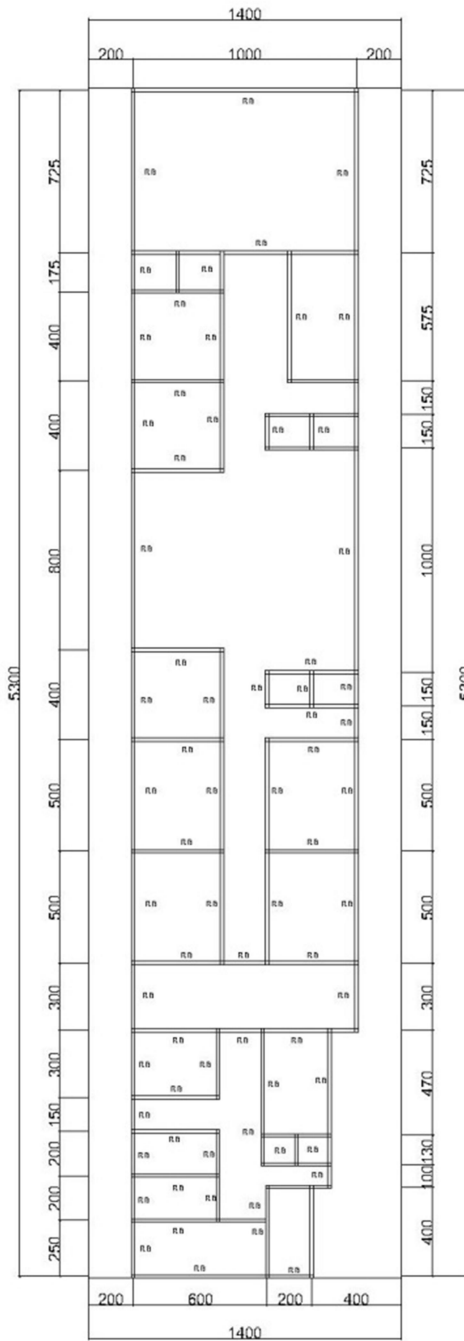




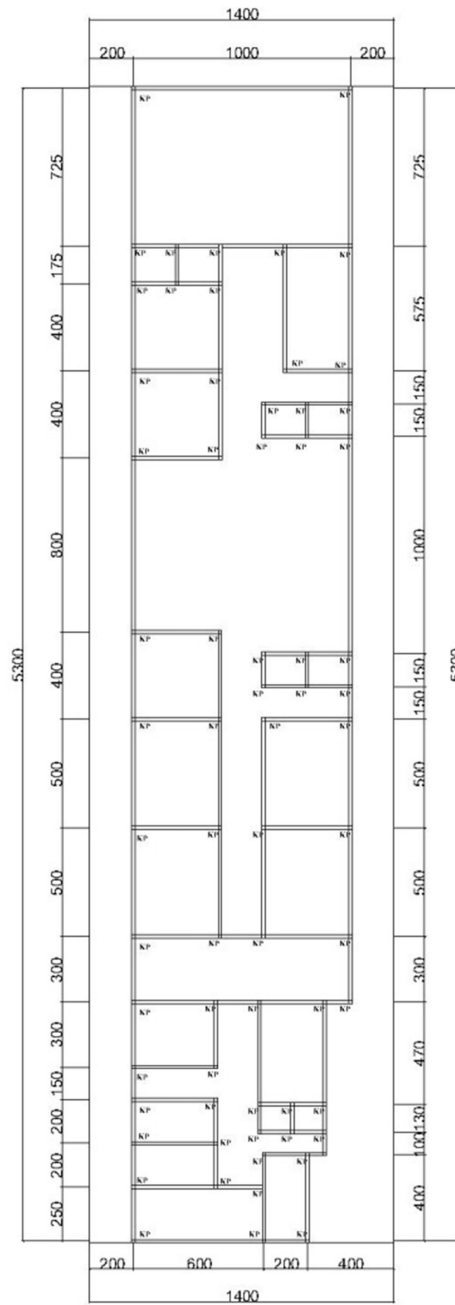
**POTONGAN B - B**  
SKALA 1 : 100



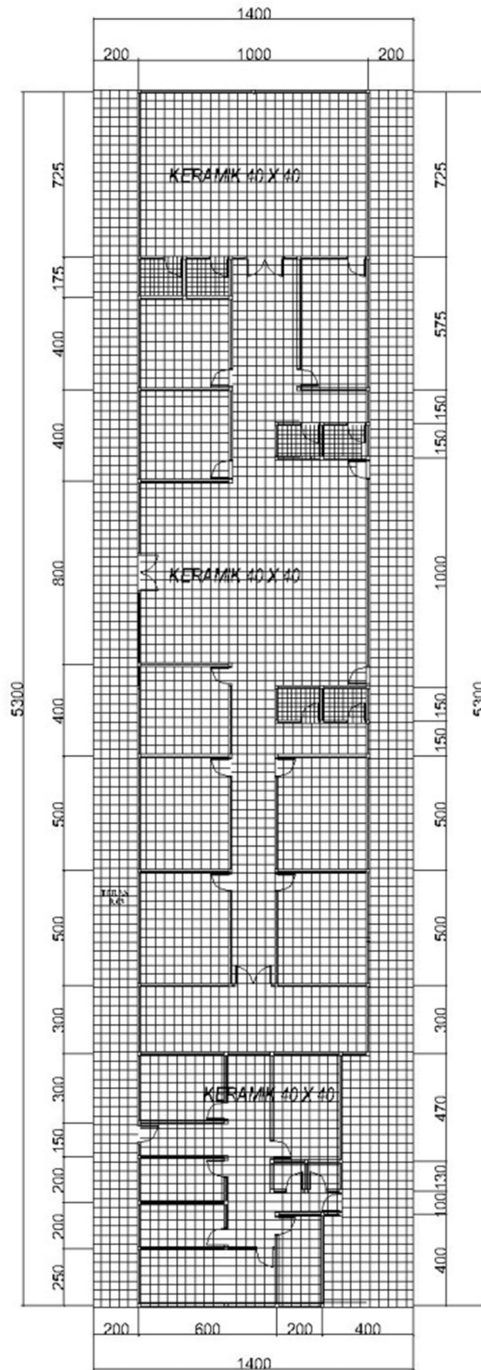
**POTONGAN A - A**  
SKALA 1 : 100



**RENCANA RING BALOK**  
 SKALA 1 : 150



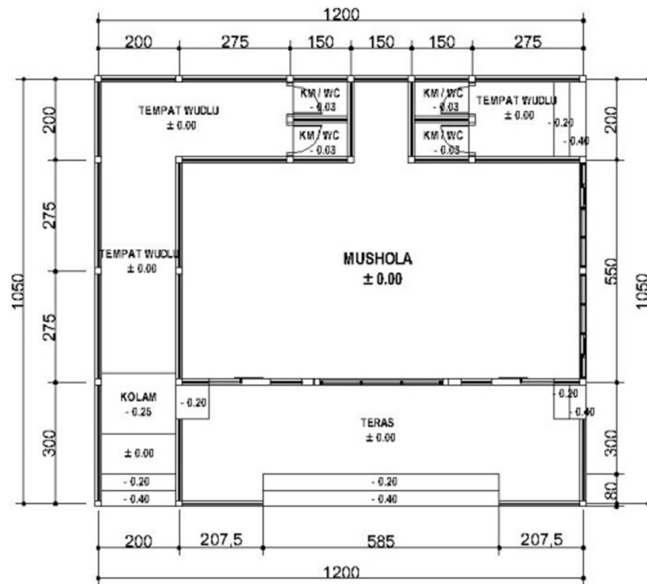
**RENCANA KOLOM**  
 SKALA 1 : 150



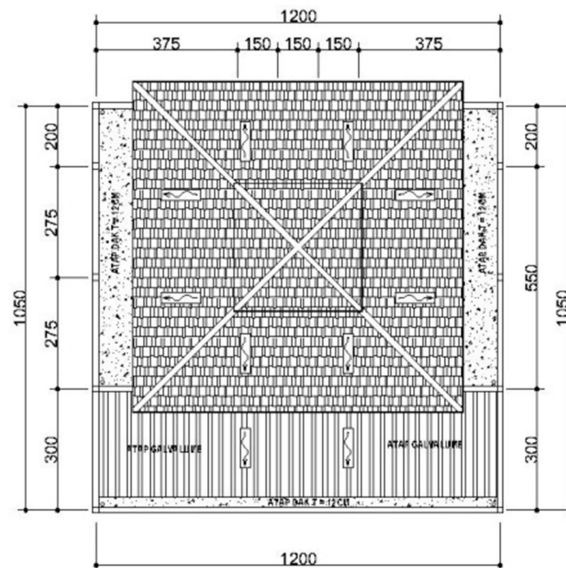
**RENCANA KERAMIK**

SKALA 1 : 150

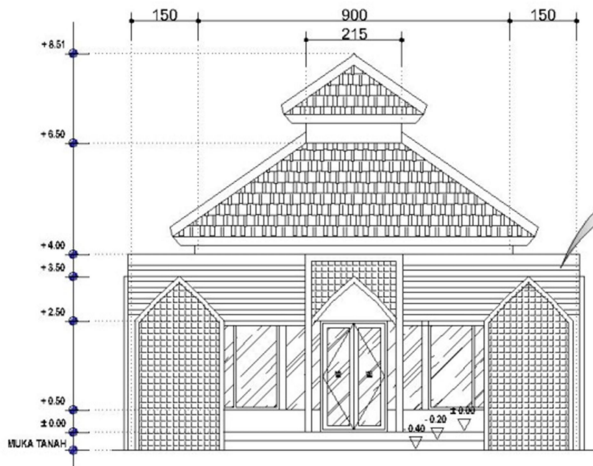




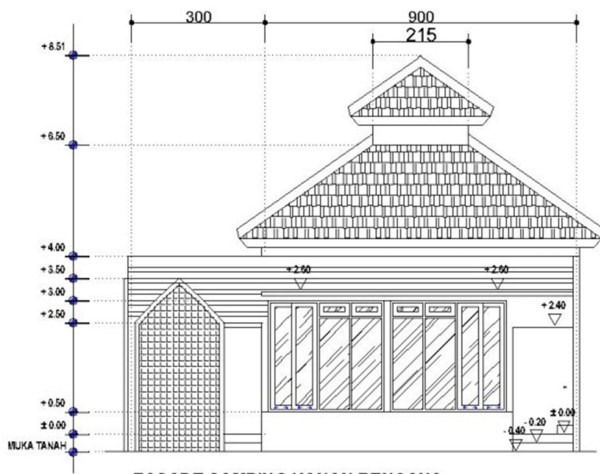
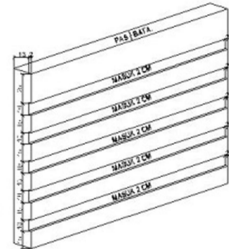
**RENCANA DENAH MUSHOLA**  
SKALA 1 : 75



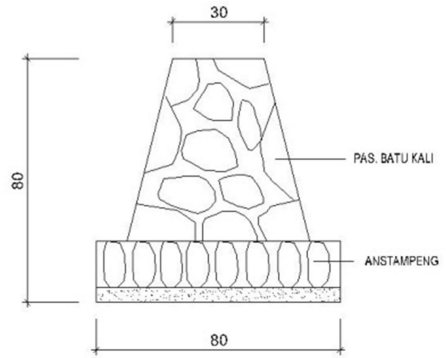
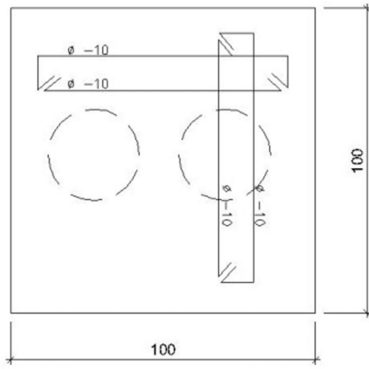
**RENCANA AIR HUJAN**  
SKALA 1 : 75



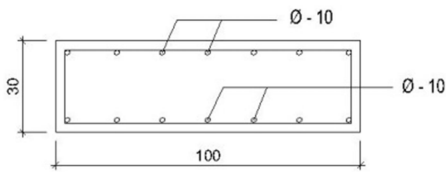
**FASADE DEPAN RENCANA**  
SKALA 1:75



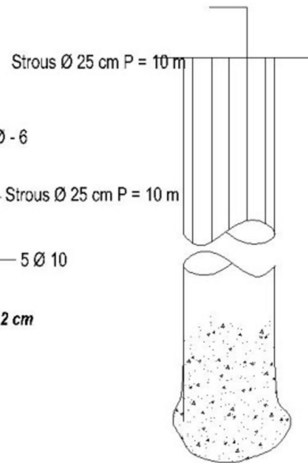
**FASADE SAMPING KANAN RENCANA**  
SKALA 1:75



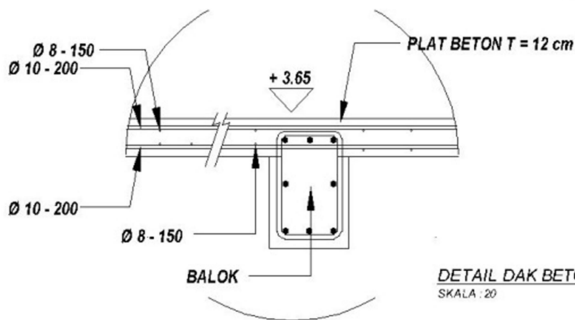
**DETAIL PONDASI**  
SKALA : 20



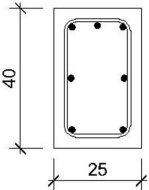
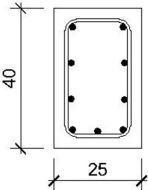
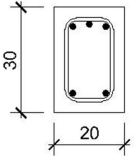
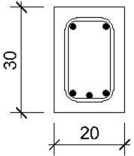
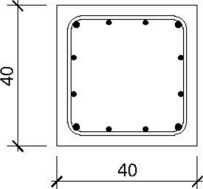
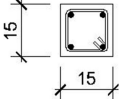
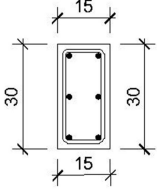
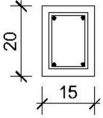
**DETAIL POOR**  
SKALA : 20

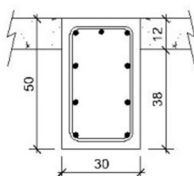
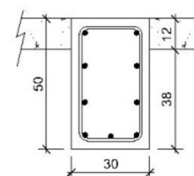
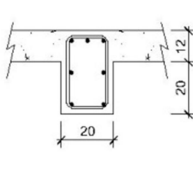
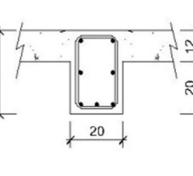
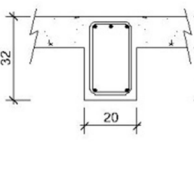
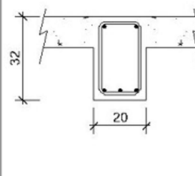


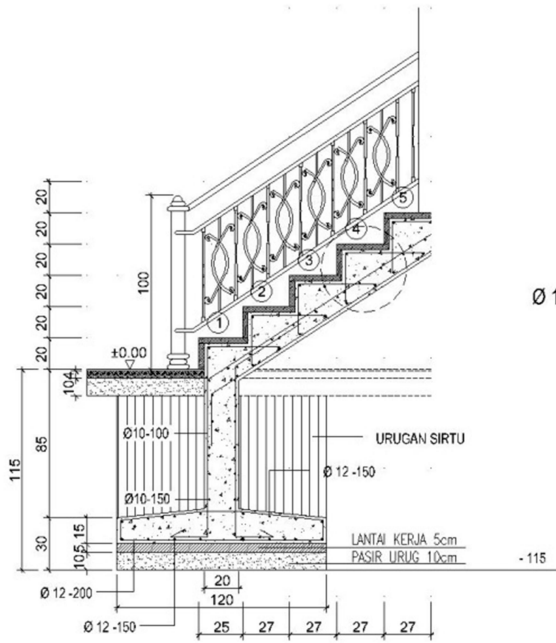
**DETAIL STROUS**  
SKALA : 20



**DETAIL DAK BETON**  
SKALA : 20

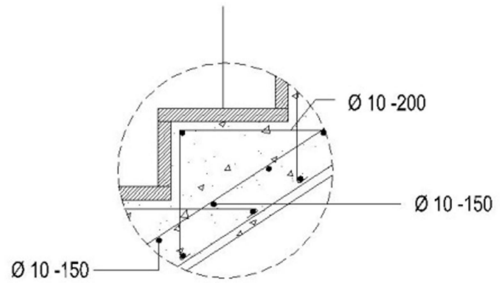
S 1		S 2	
TUMPUAN	LAPANGAN	TUMPUAN	LAPANGAN
250 X 400 mm	250 X 400 mm	200 X 300 mm	200 X 300 mm
			
3 - D 13	2 - D 13	3 - Ø 12	2 - Ø 12
2 - D 13	4 - D 13	-	-
2 - D 13	3 - D 13	2 - Ø 12	3 - Ø 12
Ø 8 - 150	Ø 8 - 150	Ø 8 - 150	Ø 8 - 150
1 : 20	1 : 20	1 : 20	1 : 20
K 1	KP	K 2	RING BALK
LAPANGAN	LAPANGAN	LAPANGAN	LAPANGAN
250 X 400 mm	150 x 150 mm	150 X 300 mm	150 X 200 mm
			
2 - d 13 / 2 - D 16	2 - Ø 10	2 - Ø 12	2 - Ø 10
4 - D 13	-	2 - Ø 12	-
2 - d 13 / 2 - D 16	2 - Ø 10	2 - Ø 12	2 - Ø 10
Ø 8 - 150	Ø 6 - 200	Ø 6 - 200	Ø 8 - 150
1 : 20	1 : 20	1 : 20	1 : 20

B 1		B . T	
TUMPUAN	LAPANGAN	TUMPUAN	LAPANGAN
300 X 500 mm	300 X 500 mm	320 X 200 mm	320 X 200 mm
			
3 - D 16	2 - D 16	3 - Ø 13	2 - Ø 13
4 - D 13	4 - D 13	2 - Ø 13	2 - Ø 13
2 - D 16	3 - D 16	2 - Ø 13	3 - Ø 13
Ø 8 - 150	Ø 8 - 150	Ø 8 - 150	Ø 8 - 150
1 : 20	1 : 20	1 : 20	1 : 20
B . A			
TUMPUAN	LAPANGAN		
320 X 200 mm	320 X 200 mm		
			
3 - Ø 12	2 - Ø 12		
-	-		
2 - Ø 12	3 - Ø 12		
Ø 8 - 150	Ø 8 - 150		
1 : 20	1 : 20		

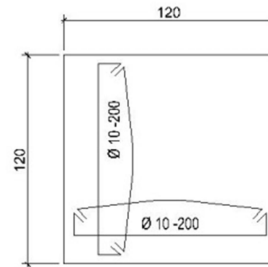


**DET. POTONGAN TANGGA**  
SKALA : 20

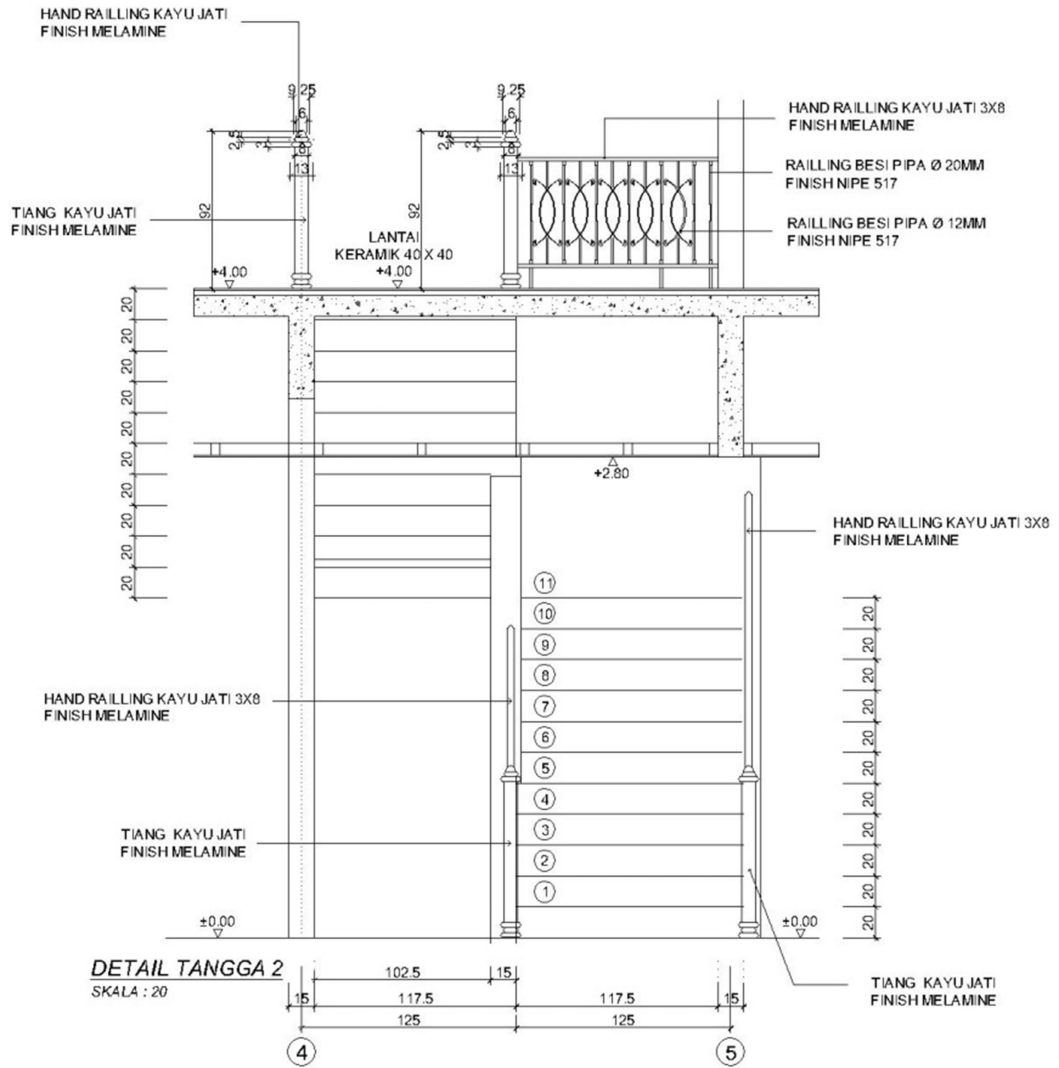
**LANTAI PAPAN KAYU 3 X 30  
FINISH MELAMINE**

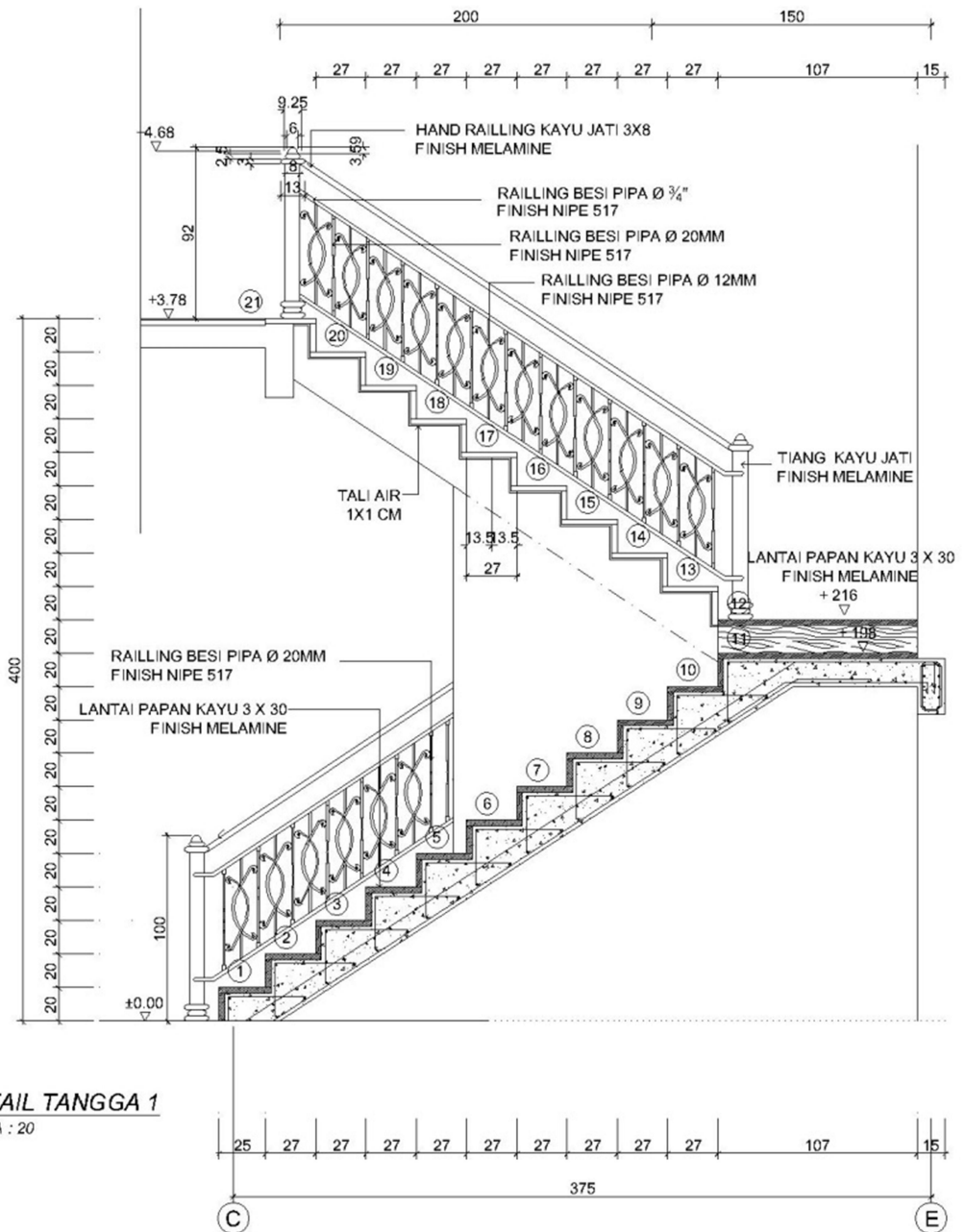


**DET. PENULANGAN TANGGA**  
SKALA : 10

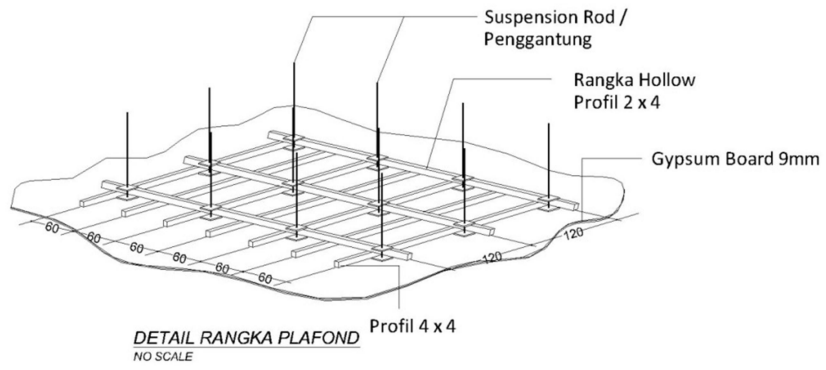


**DETAIL PONDASI TANGGA**  
SKALA : 20

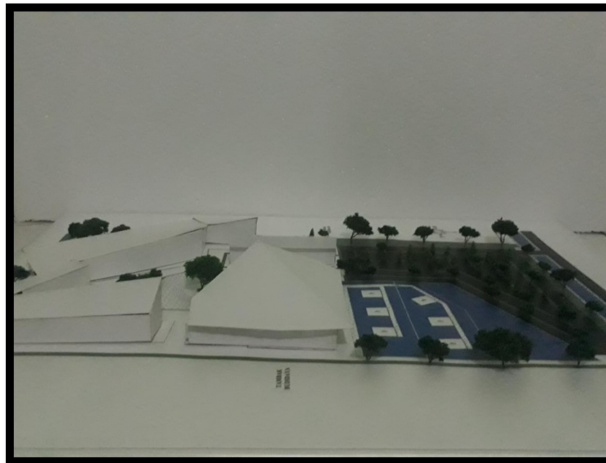








***Gambar 1. Maket***



***Gambar 2. Maket***