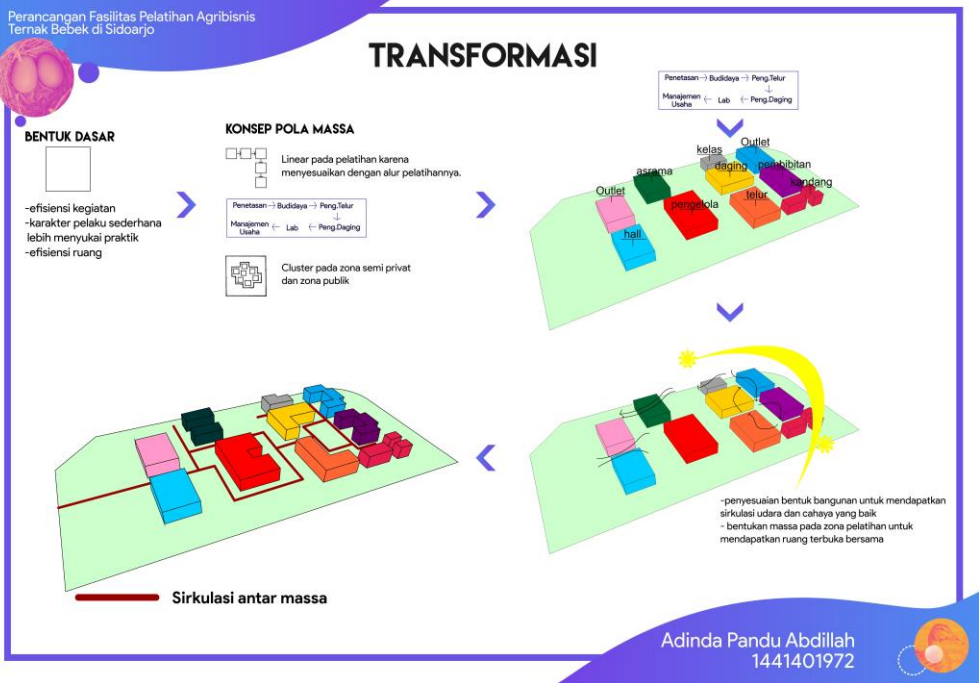
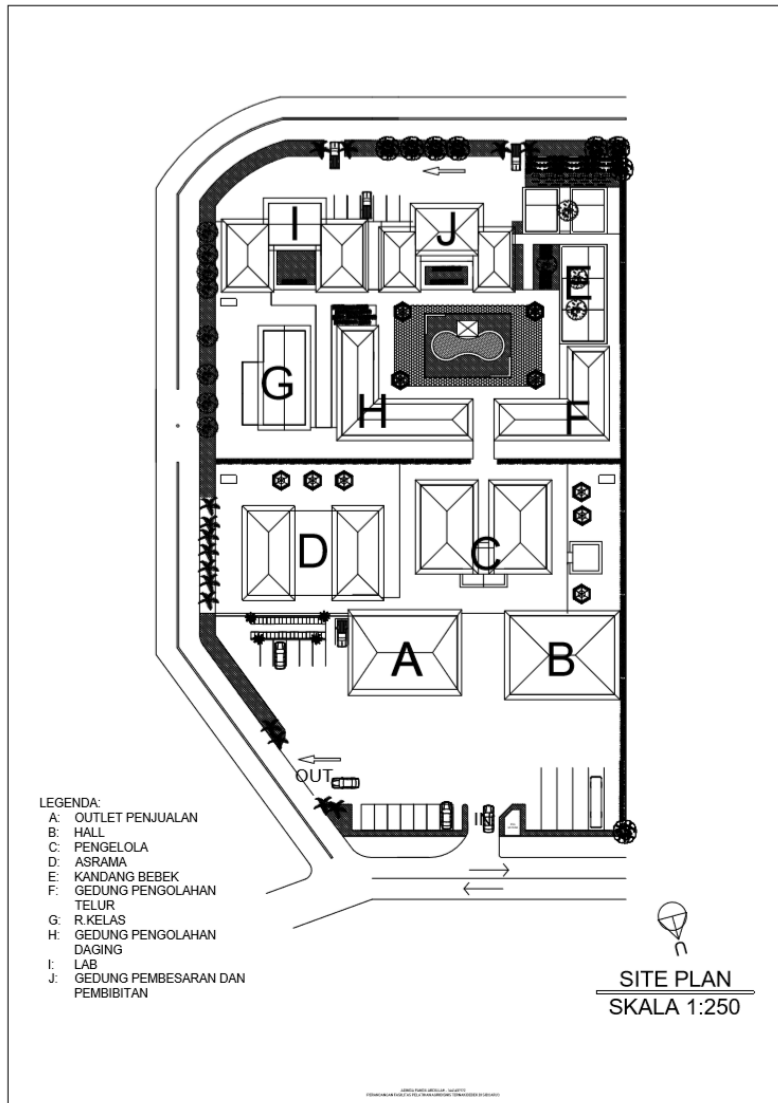


LAMPIRAN

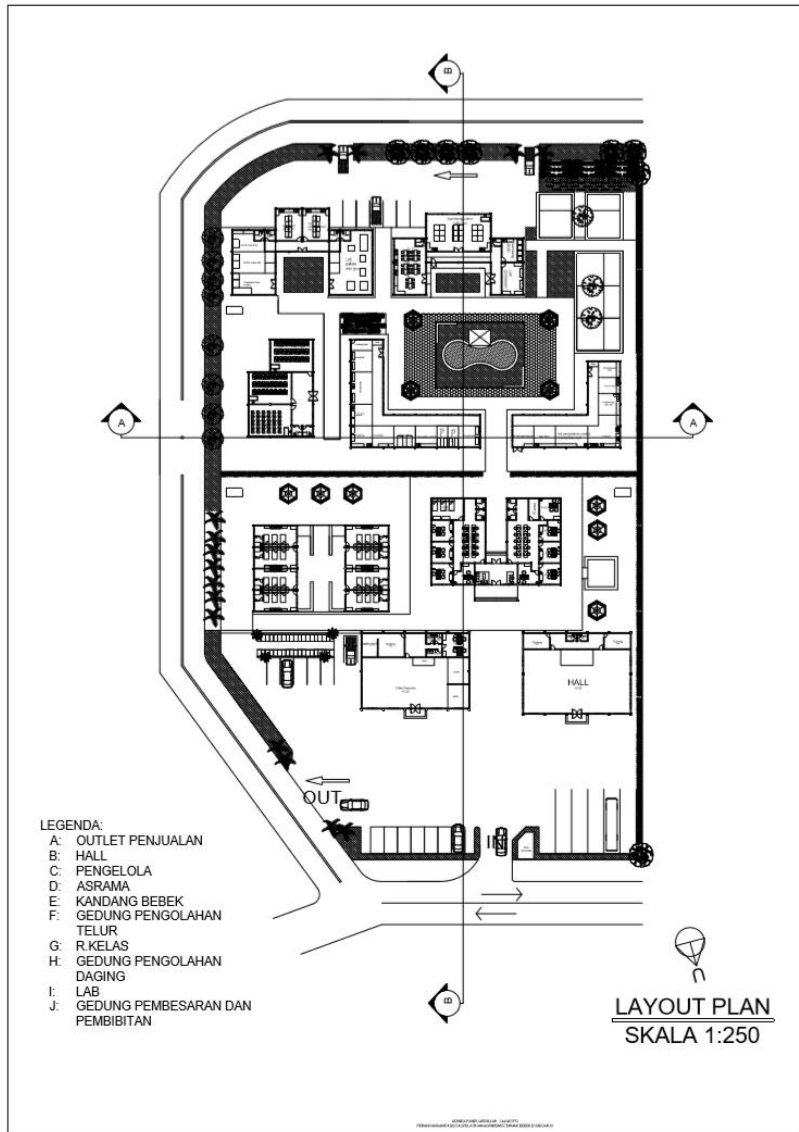


Lampiran 1: Transformasi

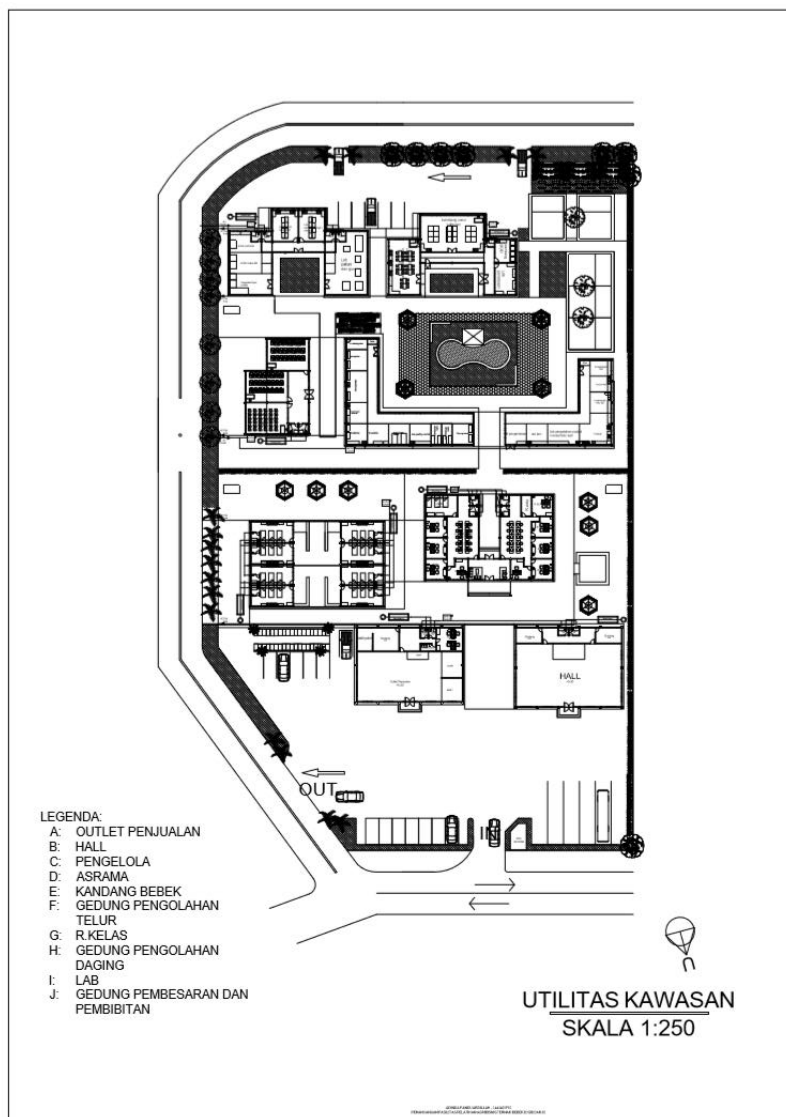
Adinda Pandu Abdillah
1441401972



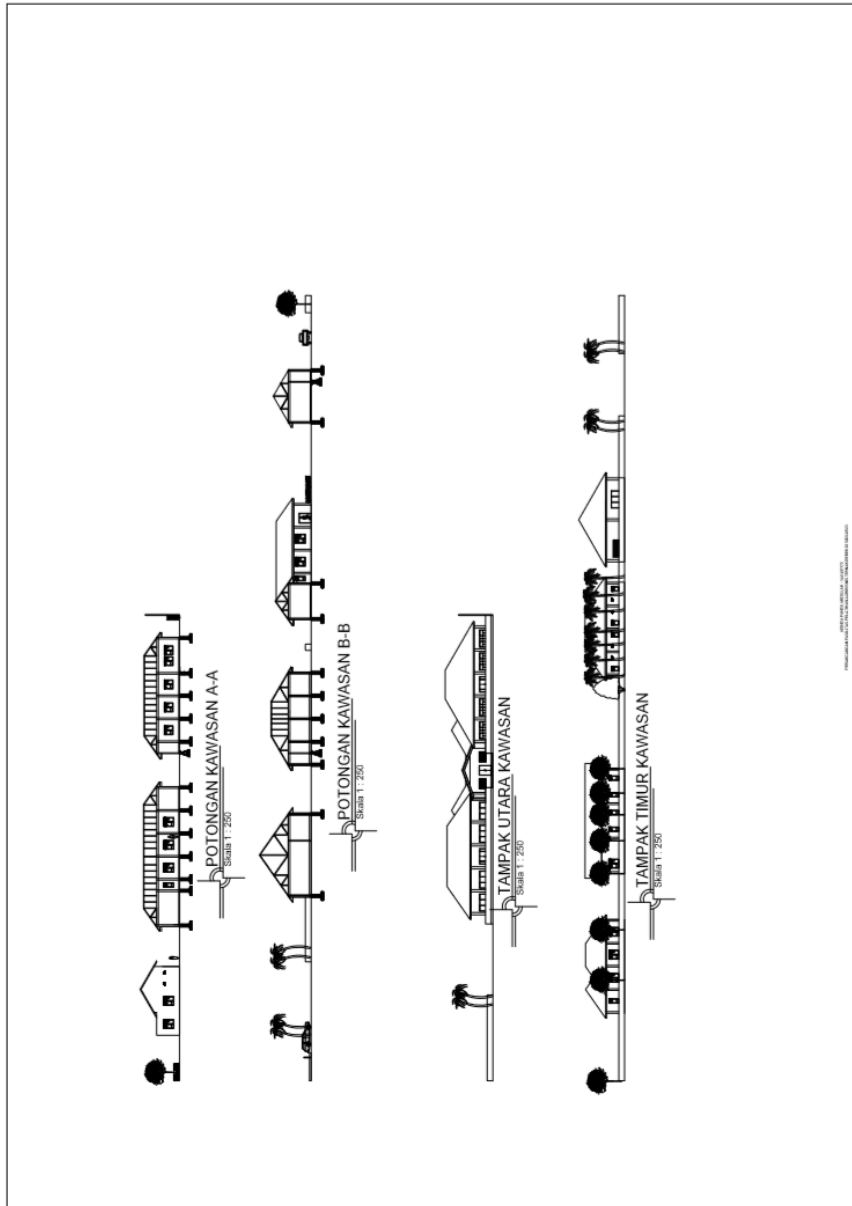
Lampiran 2: Site Plan



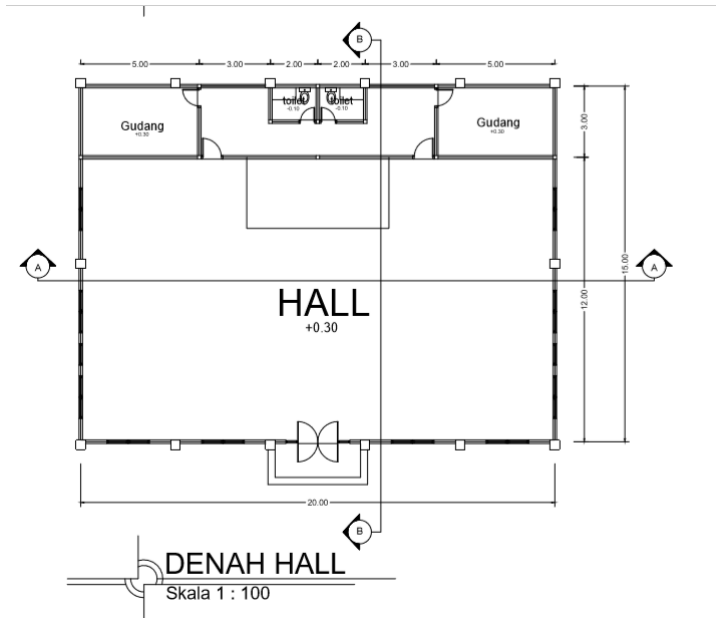
Lampiran 3: Layout Plan



Lampiran 4: Utilitas Kawasan



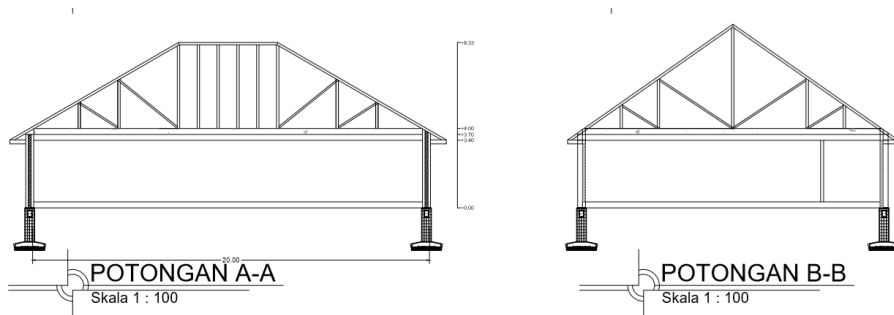
Lampiran 5: tampak dan potongan keseluruhan



Lampiran 6: Denah Hall



Lampiran 7: Tampak Bangunan Hall



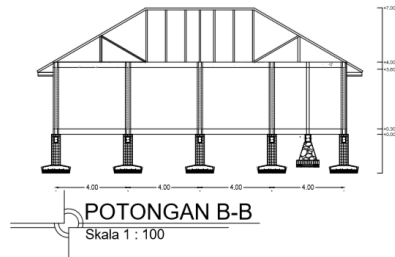
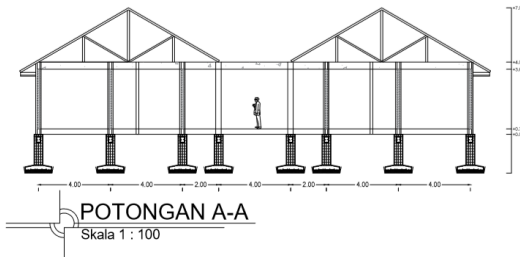
Lampiran 8: Potongan Bangunan Hall



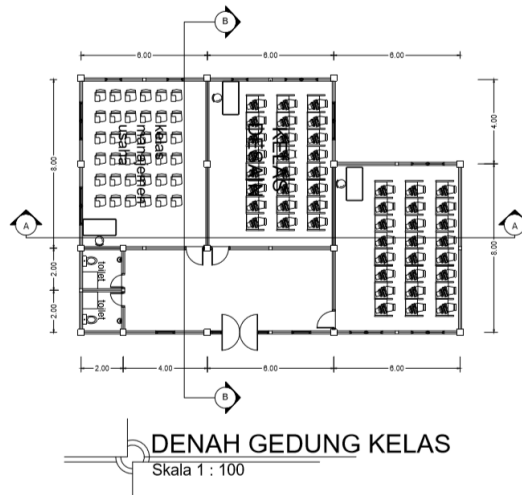
Lampiran 9: Denah Gedung Pengelola



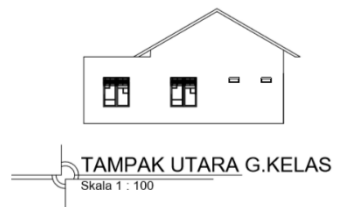
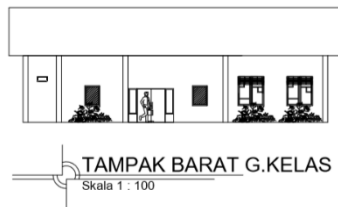
Lampiran 10: Tampak Bangunan Gedung Pengelola



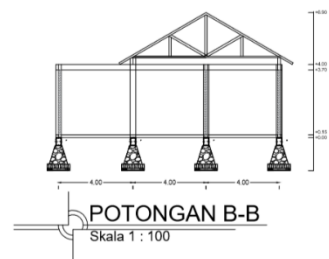
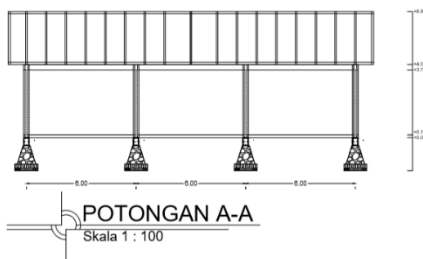
Lampiran 11: Potongan Gedung Pengelola



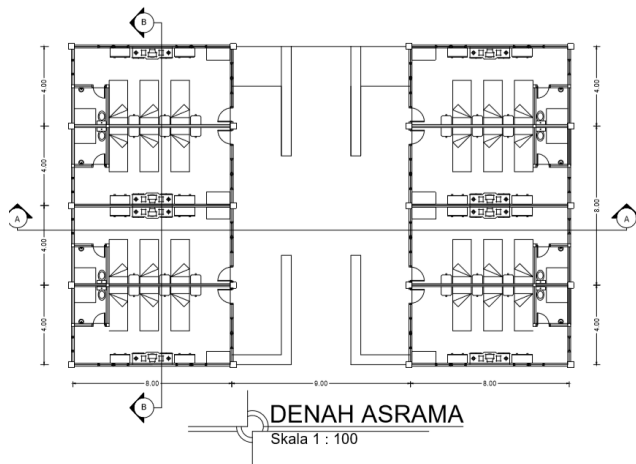
Lampiran 12 : Denah Gedung Kelas



Lampiran 13: Tampak Bangunan Gedung Kelas



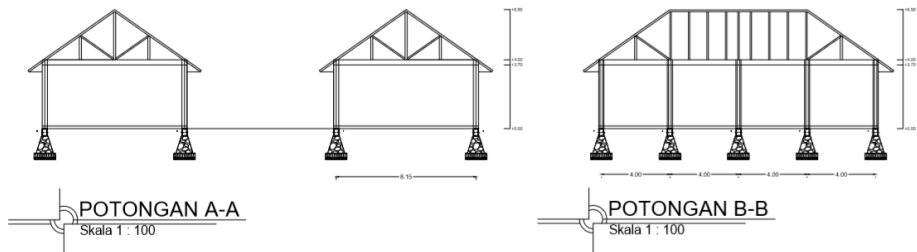
Lampiran 14: Potongan Bangunan Gedung Kelas



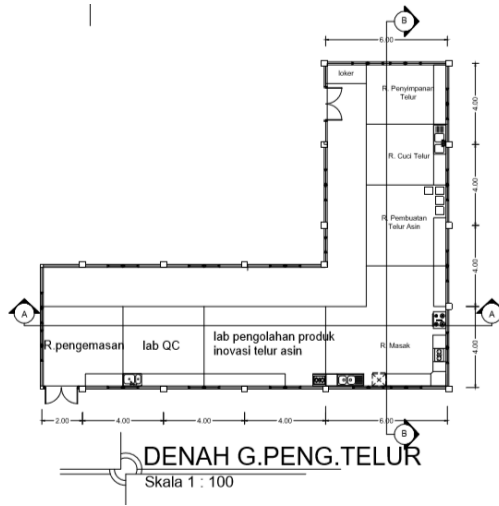
Lampiran 15: Denah Asrama



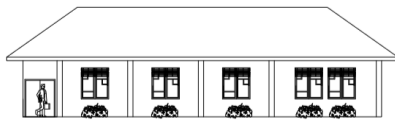
Lampiran 16: Tampak Bangunan Asrama



Lampiran 17: Potongan Bangunan Asrama



Lampiran 18: Denah Gedung Pengolahan Telur

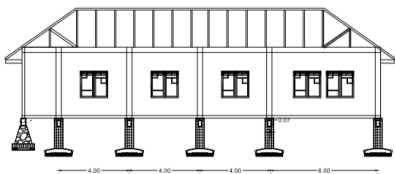


TAMPAK UTARA G.PENG.TELUR
Skala 1 : 100

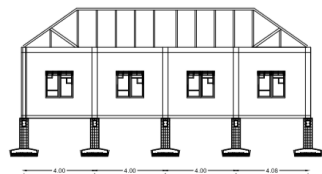


TAMPAK BARAT G.PENG.TELUR
Skala 1 : 100

Lampiran 19: Tampak Bangunan Gedung Pengolahan Telur

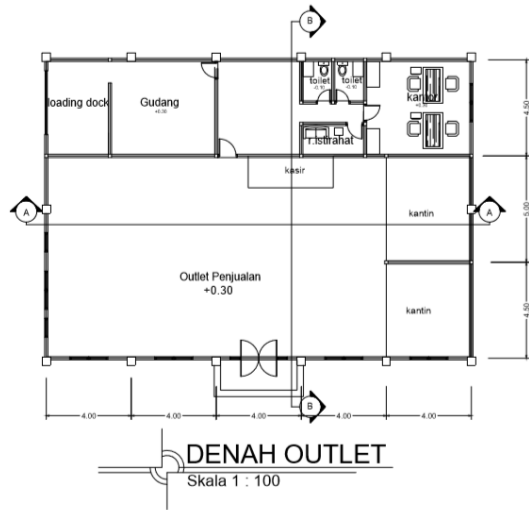


POTONGAN A-A
Skala 1 : 100

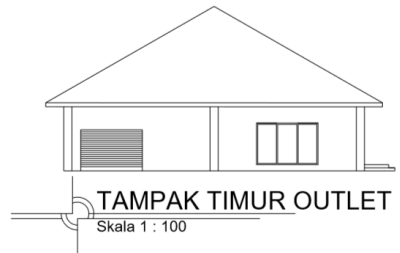


POTONGAN B-B
Skala 1 : 100

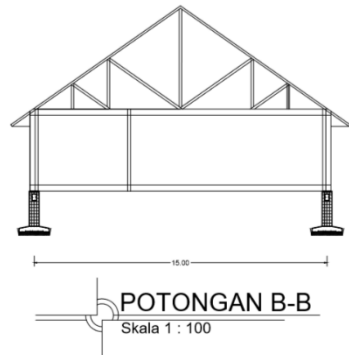
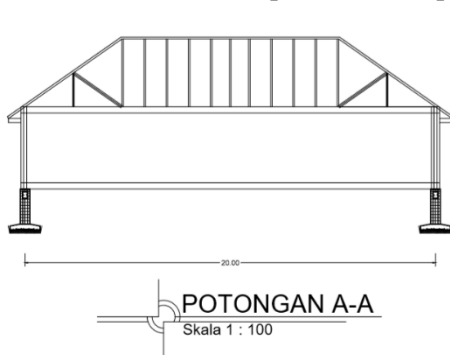
Lampiran 20: Potongan Bangunan Gedung Pengolahan Telur



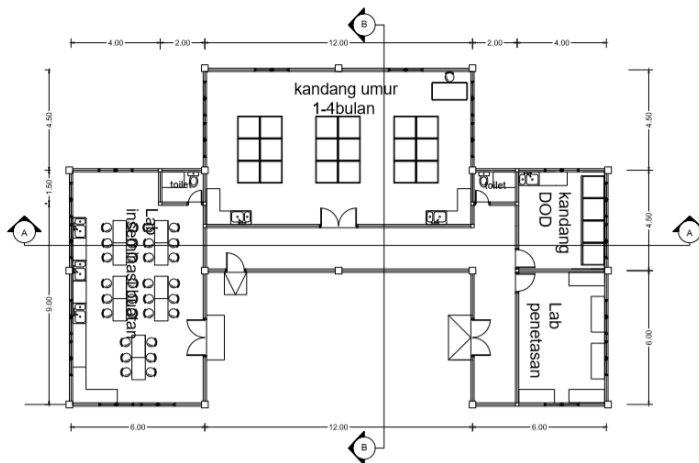
Lampiran 21: Denah Outlet



Lampiran 22: Tampak Bangunan Outlet



Lampiran 23: Potongan Bangunan Outlet



Lampiran 24: Denah Gedung Penetasan dan Pembesaran



TAMPAK UTARA G.PEMBESARAN

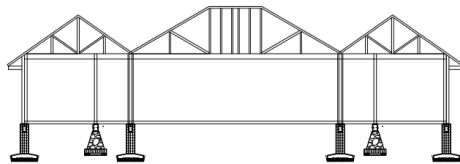
Skala 1 : 100



TAMPAK TIMUR G.PEMBESARAN

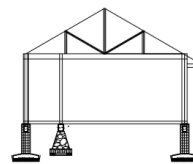
Skala 1 : 100

Lampiran 25: Tampak Gedung Penetasan dan Pembesaran



POTONGAN A-A

Skala 1 : 100



POTONGAN B-B

Skala 1 : 100

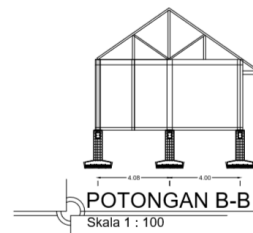
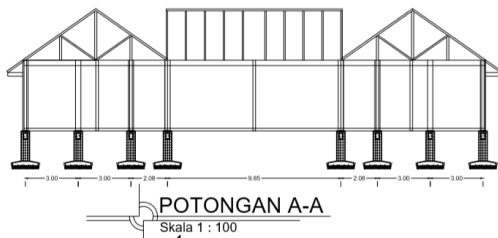
Lampiran 26: Potongan Gedung Penetasan dan Pembesaran



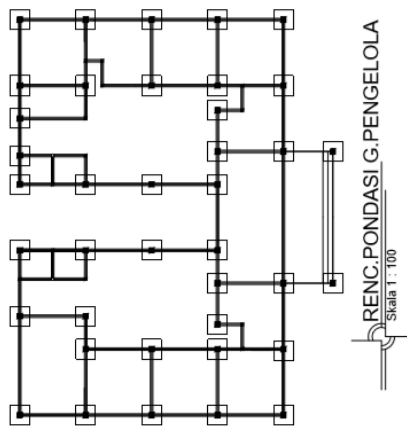
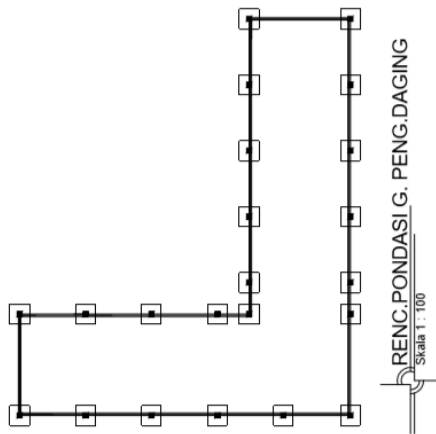
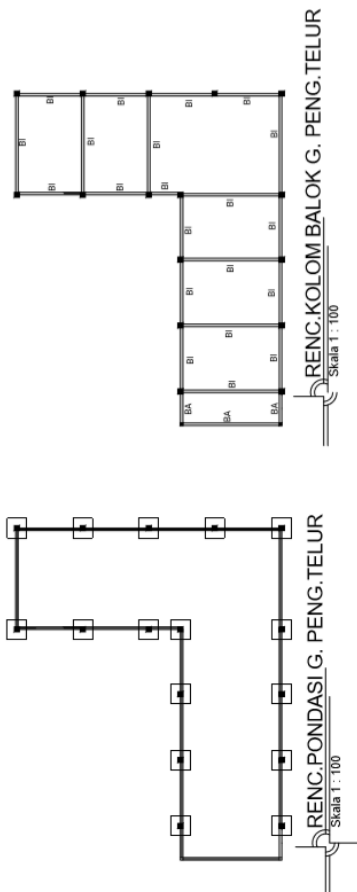
Lampiran 27: Denah Gedung Laboratorium



Lampiran 28: Tampak Gedung Laboratorium



Lampiran 29: Potongan Gedung Laboratorium



Lampiran 33: Rencana Struktur





Lampiran 34: Perspektif kawasan