

LAMPIRAN



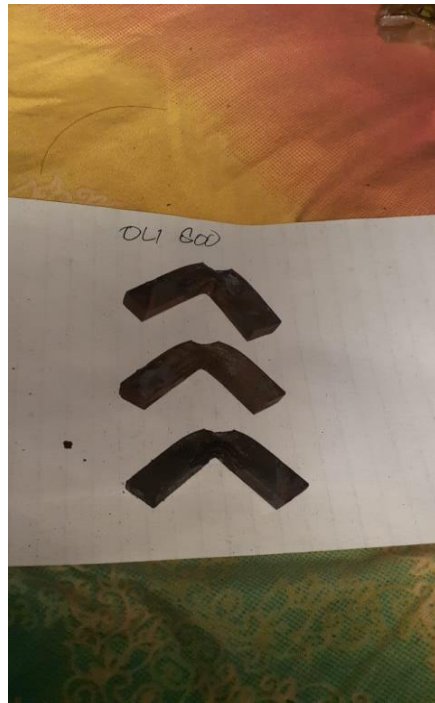
Tungku pembakaran

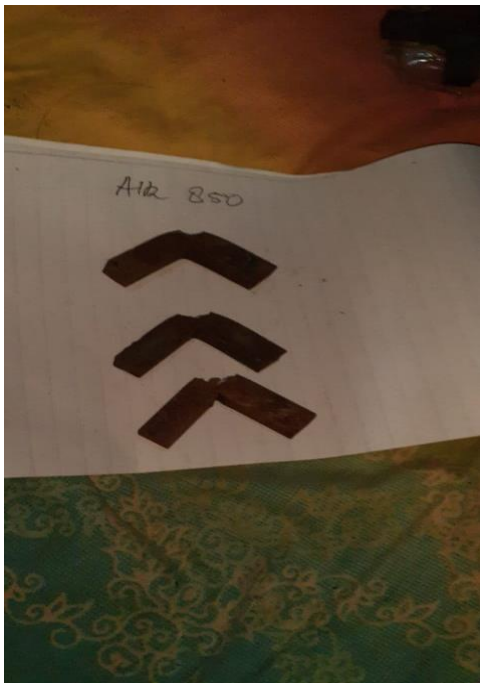


Dokumentasi uji kekerasan



Alat uji impact





Specimen uji impact





UNIVERSITAS 17 AGUSTUS 1945 SURABAYA

Fakultas program studi Teknik mesin



Data pengujian kekerasan (Rockwell)

Nama : M sahrul Maulana (1421504725)
Benny suko utomo (1421504699)

Pembimbing : Edi santoso ,S.T.,M.T

BENDA UJI	KONDISI INDENTASI	INDENTASI	SUHU	MEDIA PENDINGIN	NILAI KEKERASAN				RATA-RATA	
					Titik 1	Titik 2	Titik 3	Titik 4		
BAJA ST 42	P = 150 kgf T = 5 detik	Diamond ccone (Black)		Tanpa perlakuan panas	30.0	29.0	32.0	34.0	31.25	
				800°	Air	45.0	43.4	47.7	46.1	45.55
					Air garam	45.9	48.0	49.3	49.7	48.22
					OLI SAE 10	48.8	50.1	49.3	51.4	49.9
				850°	Air	51.8	55.0	52.5	56.0	53.82
					Air garam	54.7	54.5	55.0	57.4	55.4
					OLI SAE 10	59.3	57.8	56.0	56.1	57.32
				900°	Air	58.3	59.5	59.0	58.6	58.85
					Air garam	62.4	61.2	67.0	63.6	63.55
					OLI SAE 10	64.0	63.3	63.3	65.6	63.97

SURABAYA, 25 Juni 2020



Lab. METAS LAB METALOGRAFI
Fakultas Teknik
UNTAG Surabaya

Hasil uji kekerasan



**UNIVERSITAS 17 AGUSTUS 1945
SURABAYA**



**Fakultas program studi Teknik mesin
Data pengujian impact (charpy)**

Nama : M sahrul Maulana (1421504725)
Benny suko utomo (1421504699)

Pembimbing : Edi santoso ,S.T.,M.T

Specimen	Suhu hardening	Media pendingin	Suhu impact (°C)	β_1	Specimen 1	Specimen 2	Specimen 3	β_2 rata-rata
Baja ST 42	800°	Tanpa perlakuan panas	30°	110	15.3	15.95	14.95	15.4
		Air	30°	110	29.3	28.9	27.9	28.8
		Air garam	30°	110	34.8	32.6	32.8	33.5
	850°	OLI SAE 10	30°	110	40.8	35.5	39.2	38.6
		Air	30°	110	49.6	48.2	44.7	47.5
		Air garam	30°	110	54.7	50.1	51.8	52.2
		OLI SAE 10	30°	110	55.0	59.0	56.7	56.9
		Air	30°	110	31.9	59.9	52.2	48.0
		Air garam	30°	110	68.5	65.9	65.1	66.5
	900°	OLI SAE 10	30°	110	65.3	66.0	69.4	66.9



SURABAYA, 25 Juni 2020

ASS. LAB. METALOGRAFI

Hasil pengujian impact