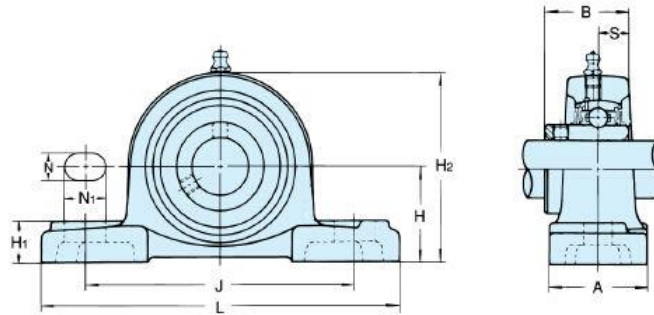


Lampiran 1 Katalog Bearing UCP

**PILLOW BLOCKS**

**UCP 200 type**



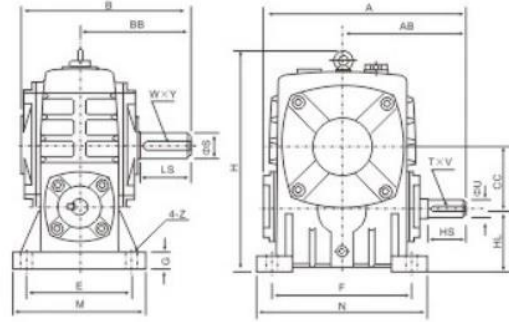
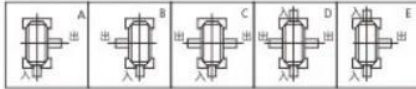
Shaft Diam. mm	Unit No.	Dimensions mm										Bolt Size mm	Bearing		Housing No.	Weight kg	
		H	L	J	A	N	N <sub>1</sub>	H <sub>1</sub>	H <sub>2</sub>	B	S		No.	Basic Load Rating kN Cr Cor			
12	<b>UCP 201</b>	30.2	127	95	38	13	19	15	62	31	12.7	M10	<b>UC 201</b>	12.8	6.6	<b>P 203</b>	0.65
15	<b>UCP 202</b>	30.2	127	95	38	13	19	15	62	31	12.7	M10	<b>UC 202</b>	12.8	6.6	<b>P 203</b>	0.63
17	<b>UCP 203</b>	30.2	127	95	38	13	19	15	62	31	12.7	M10	<b>UC 203</b>	12.8	6.6	<b>P 203</b>	0.62
20	<b>UCP 204</b>	33.3	127	95	38	13	19	15	65	31	12.7	M10	<b>UC 204</b>	12.8	6.6	<b>P 204</b>	0.65
25	<b>UCP 205</b>	36.5	140	105	38	13	16	16	70	34.1	14.3	M10	<b>UC 205</b>	14	7.9	<b>P 205</b>	0.79
30	<b>UCP 206</b>	42.9	165	121	48	17	21	18	83	38.1	15.9	M14	<b>UC 206</b>	19.6	11.3	<b>P 206</b>	1.26
35	<b>UCP 207</b>	47.6	167	127	48	17	21	19	94	42.9	17.5	M14	<b>UC 207</b>	25.9	15.4	<b>P 207</b>	1.59
40	<b>UCP 208</b>	49.2	184	137	54	17	25	19	100	49.2	19	M14	<b>UC 208</b>	29.3	17.9	<b>P 208</b>	1.92
45	<b>UCP 209</b>	54	190	146	54	17	22	20	108	49.2	19	M14	<b>UC 209</b>	33	20.5	<b>P 209</b>	2.19
50	<b>UCP 210</b>	57.2	206	159	60	20	25	22	114	51.6	19	M16	<b>UC 210</b>	35.5	23.2	<b>P 210</b>	2.59
55	<b>UCP 211</b>	63.5	219	171	60	20	25	22	126	55.6	22.2	M16	<b>UC 211</b>	43	29.4	<b>P 211</b>	3.3
60	<b>UCP 212</b>	69.8	241	184	70	20	25	25	138	65.1	25.4	M16	<b>UC 212</b>	52.5	36.1	<b>P 212</b>	4.7
65	<b>UCP 213</b>	76.2	265	203	70	25	29	27	150	65.1	25.4	M20	<b>UC 213</b>	57.5	40	<b>P 213</b>	5.6
70	<b>UCP 214</b>	79.4	266	210	72	25	31	27	156	74.6	30.2	M20	<b>UC 214</b>	62	44	<b>P 214</b>	7.3
75	<b>UCP 215</b>	82.6	275	217	74	25	31	28	163	77.8	33.3	M20	<b>UC 215</b>	66	48.2	<b>P 215</b>	7.9
80	<b>UCP 216</b>	88.9	292	232	78	25	31	30	175	82.6	33.3	M20	<b>UC 216</b>	72.5	53	<b>P 216</b>	10.0
85	<b>UCP 217</b>	95.2	310	247	83	25	31	32	187	85.7	34.1	M20	<b>UC 217</b>	83.5	61.8	<b>P 217</b>	12.2
90	<b>UCP 218</b>	101.6	327	262	88	27	33	34	200	96	39.7	M22	<b>UC 218</b>	95.5	71.4	<b>P 218</b>	14.7

Lampiran 2 Katalog WPA reducer

**WPA**

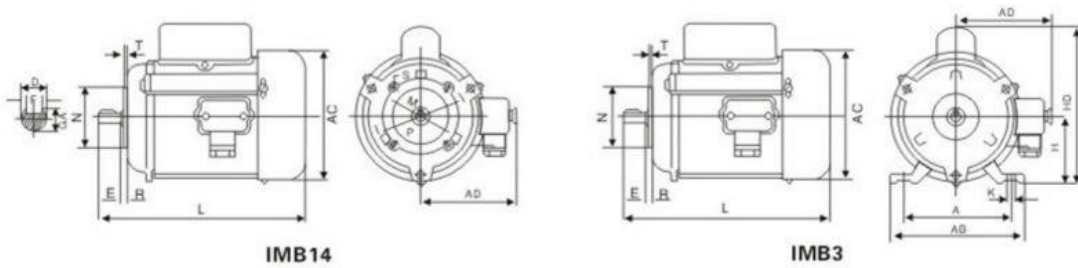


轴指向表示  
SHAFT DIRECTION



型号 size	传动比 ratio	A	AB	B	BB	CC	H	HL	M	N	E	F	G	Z	输入input shaft			输出output shaft			重量 (kg)	油重 (L)
															HS	U	T×V	LS	S	W×Y		
40	5	143	87	114	74	40	138	40	90	100	70	80	13	10	25	12	4×2.5	28	14	5×3	4	0.13
50	10	175	107	150	97	50	173	50	120	140	95	110	15	12	30	12	4×2.5	40	17	5×3	7	0.17
60	15	198	122	168	112	60	204	60	130	150	105	120	20	12	40	15	5×3	50	22	6×3.5	10	0.22
70	20	231	140	194	131	70	236	70	150	190	115	150	20	15	40	18	6×3.5	60	28	8×4	15	0.60
80	25	261	160	214	142	80	268	80	170	220	135	180	20	15	50	22	6×3.5	65	32	10×5	20	0.85
100	30	322	190	254	169	100	329	100	190	270	155	220	25	15	50	25	8×4	75	38	10×5	35	1.50
120	40	381	229	282	190	120	430	120	230	320	180	260	30	18	65	30	8×4	85	45	14×5.5	60	3.20
135	50	433	260	317	210	135	480	135	250	350	200	290	30	18	75	35	10×5	95	55	16×6	80	3.60
147	60	439	264	324	212	147	501	123	250	350	200	280	32	18	80	35	10×5	95	55	16×6	90	3.70
155	70	504	302	382	252	155	531	135	275	390	220	320	35	21	85	40	12×5	110	60	18×7	110	3.80
175	80	545	325	402	262	175	600	160	310	430	250	350	40	21	85	45	14×5.5	110	65	18×7	150	4.60
200	100	587	350	467	305	200	667	175	360	480	290	390	40	24	95	50	14×5.5	125	70	20×7.5	215	6.50
250		705	420	552	360	250	800	200	460	560	380	480	45	26	110	60	18×7	155	90	25×9	360	9.00

Lampiran 3 Katalog motor listrik



**Overall & Installation Dimensions**

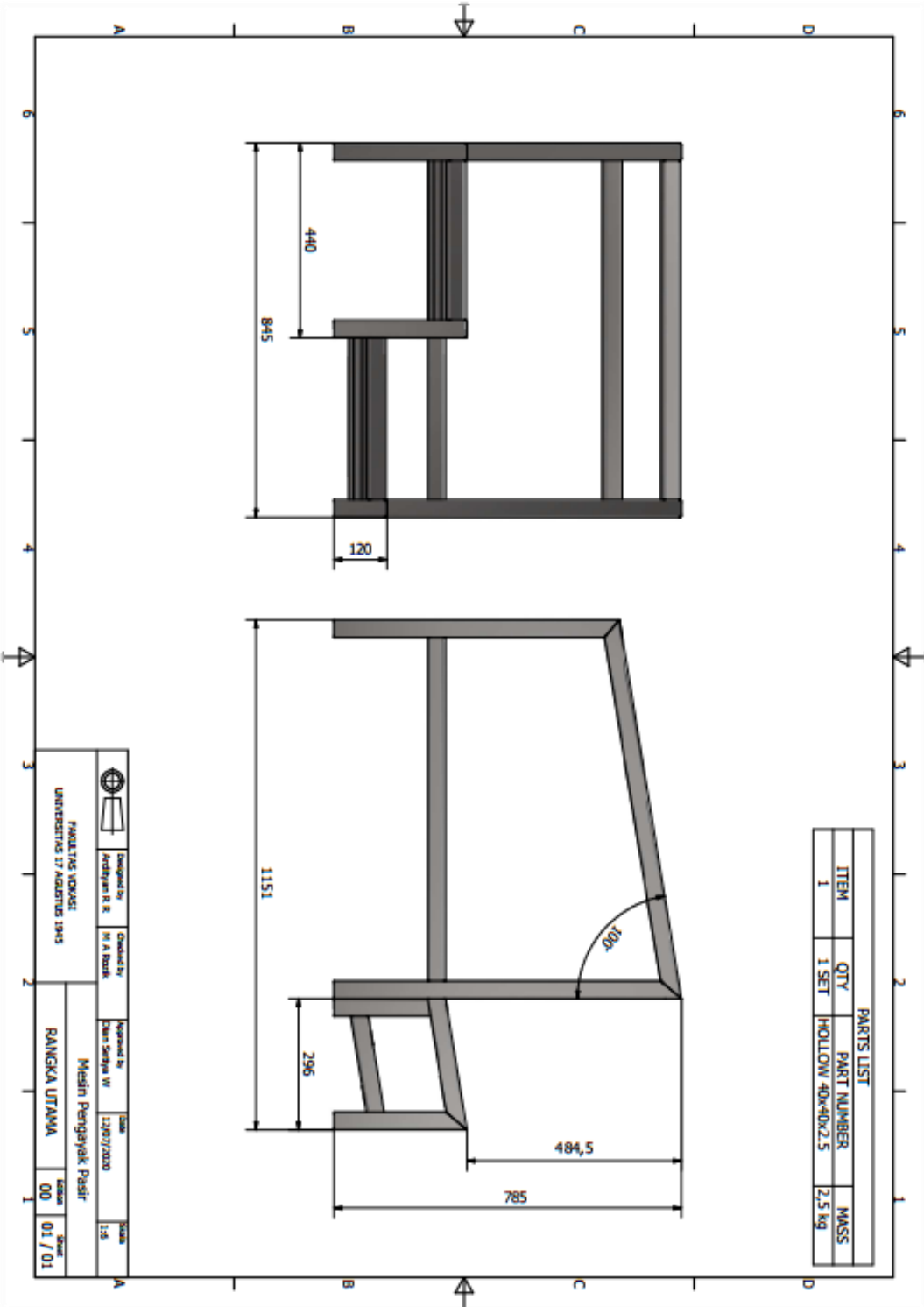
Frame Size	Mounting Dimensions(mm)															Overall Dimensions(mm)				
	A	B	C	D	E	F	GA	H	K	M	N	P	R	S	T	AB	AC	AD	HD	L
2	160	112	63	19	40	6	21.5	100	12	115	95	140	0	M8	3	190	190	128	246	330
1	140	100	56	16	40	5	18	90	10	100	80	120	0	M8	3	176	176	121	220	286
09	125	100	50	14	30	4	15.5	80	10	85	70	105	0	M8	3	156	156	108	190	258

**TECHNICAL DATA**

Frame Size	Model	Output		Speed (r/min)	Power factor	Eff (%)	Max torque Rated torque	Starting torque Rated torque
		(W)	(HP)					
2	JY2A-2	1100	1.5	2850	0.77	71	1.8-2	2-3.5
	JY2B-2	750	1	2850	0.75	70	1.8-2	2-3.5
	JY2A-4	750	1	1400	0.68	69	1.8-2	2-3.5
	JY2B-4	550	3/4	1400	0.68	67	1.8-2	2-3.5
1	JY1A-2	550	3/4	2800	0.72	66	1.8-2	2-3.5
	JY1B-2	370	1/2	2800	0.72	66	1.8-2	2-3.5
	JY1A-4	370	1/2	1400	0.62	64	1.8-2	2-3.5
	JY1B-4	250	1/3	1400	0.62	60	1.8-2	2-3.5
0.9	JY09A-2	250	1/3	2800	0.72	63	1.8-2	2-3.5
	JY09B-2	180	3/4	2800	0.72	60	1.8-2	2-3.5
	JY09A-4	180	3/4	1400	0.62	56	1.8-2	2-3.5



Lampiran 5 Desain rangka utama



## Lampiran 6 Berat komponen mesin

### BERAT KOMPONEN MESIN

Berat sangat komponen mesin digunakan dalam menentukan bahan dan kekuatan yang dibutuhkan dalam perancangan rangka mesin. Berikut tabel berat serta gaya dari komponen-komponen mesin yang digunakan :

<b>KOMPONEN</b>	<b>TIPE</b>	<b>BERAT (kg)</b>
Motor Listrik	JY2A-4	25 kg
Reducer Gear Box	WPA 50 Ratio 1:30	7 kg
Pulley Motor	B1 3" – 19mm	0.4 kg
Pulley Output Reducer	B1 6" – 17mm	1.8 kg
Pulley Input Reducer	B1 3" – 12mm	0.4 kg
Pulley Pengayak	B1 7" – 30mm	2.2 kg
Bantalan Bearing	UCP 206	1.26 kg
As Silinder	S40C AS 30	1,5 kg
Tarikan V-Belts	Tegangan Tarik	±