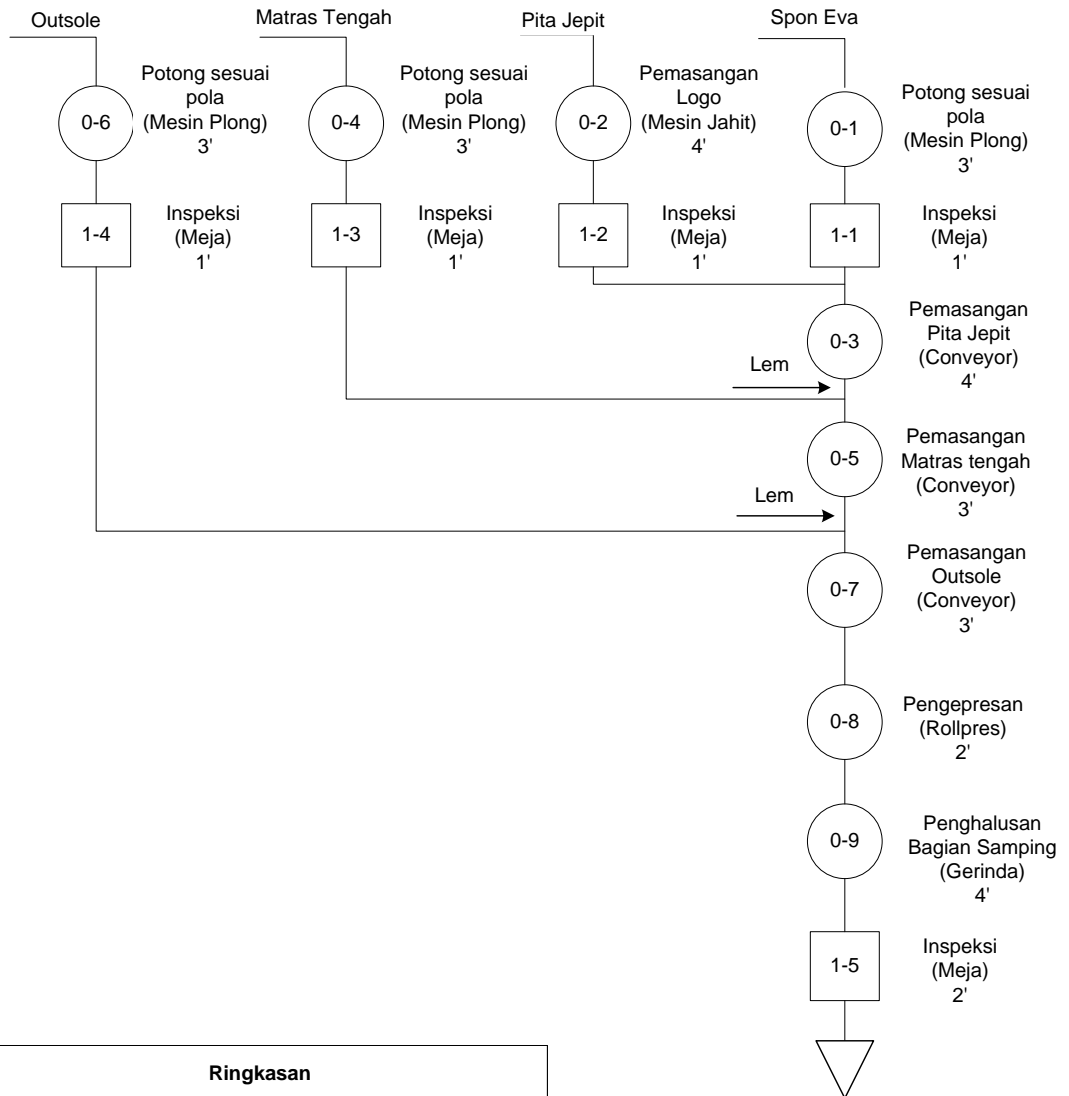
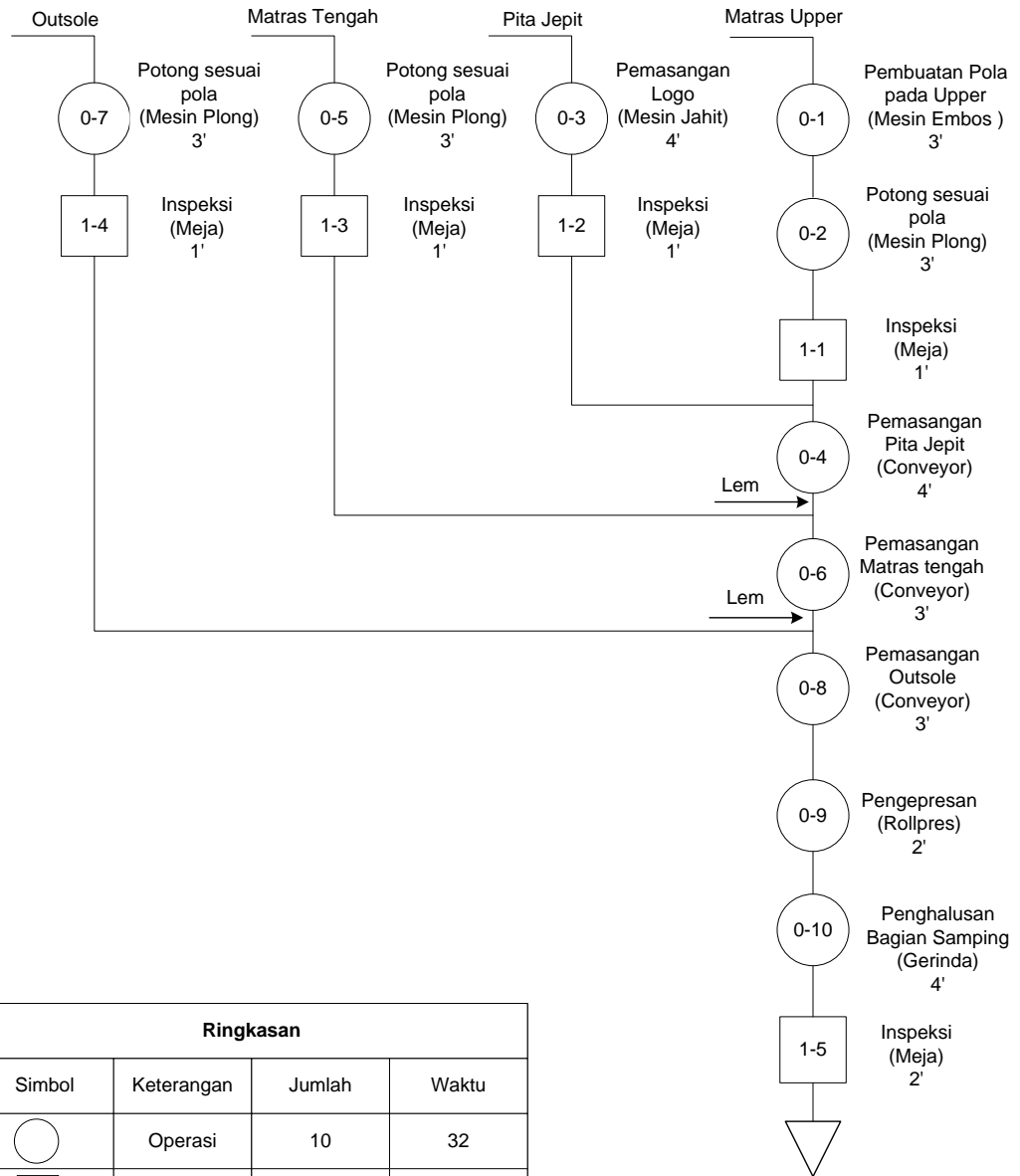


Nama Objek : Sandal Jepit Wanita
 Nomer Peta : 1
 Dipetakan Oleh : Moch Zainul Wahyufi
 Tanggal Dipetakan : 4 Desember 2017



Ringkasan			
Simbol	Keterangan	Jumlah	Waktu
○	Operasi	9	29
□	Inspeksi	5	6
			35

Nama Objek : Sandal Jepit Pria
 Nomer Peta : 1
 Dipetakan Oleh : Moch Zainul Wahyufi
 Tanggal Dipetakan: 4 Desember 2017



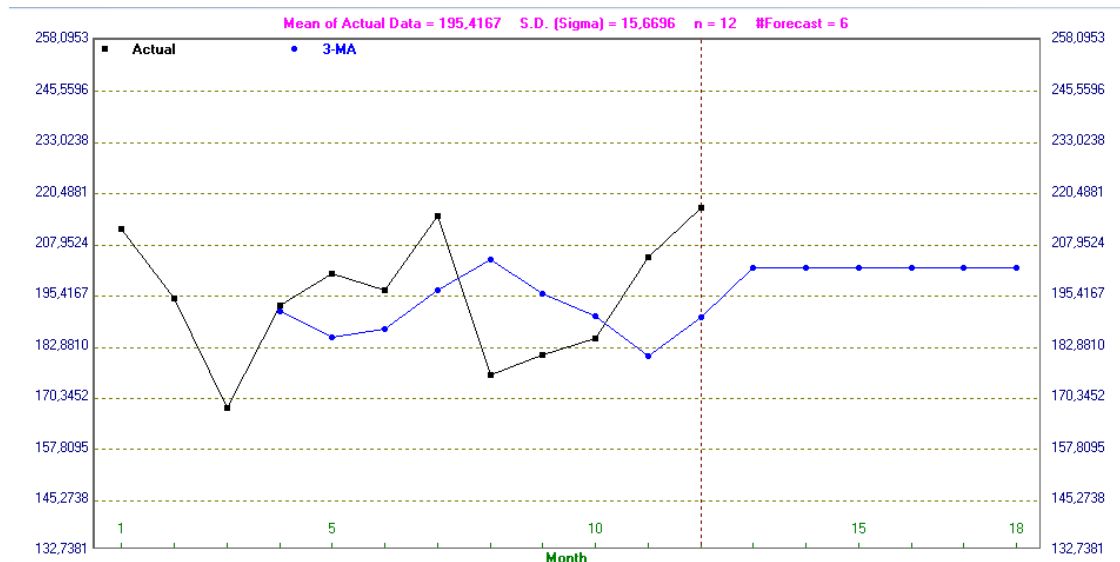
Ringkasan			
Simbol	Keterangan	Jumlah	Waktu
○	Operasi	10	32
□	Inspeksi	5	6
			38

LAMPIRAN 2 (PERHITUNGAN PERAMALAN)

1. Perhitungan peramalan pada sandal jepit wanita

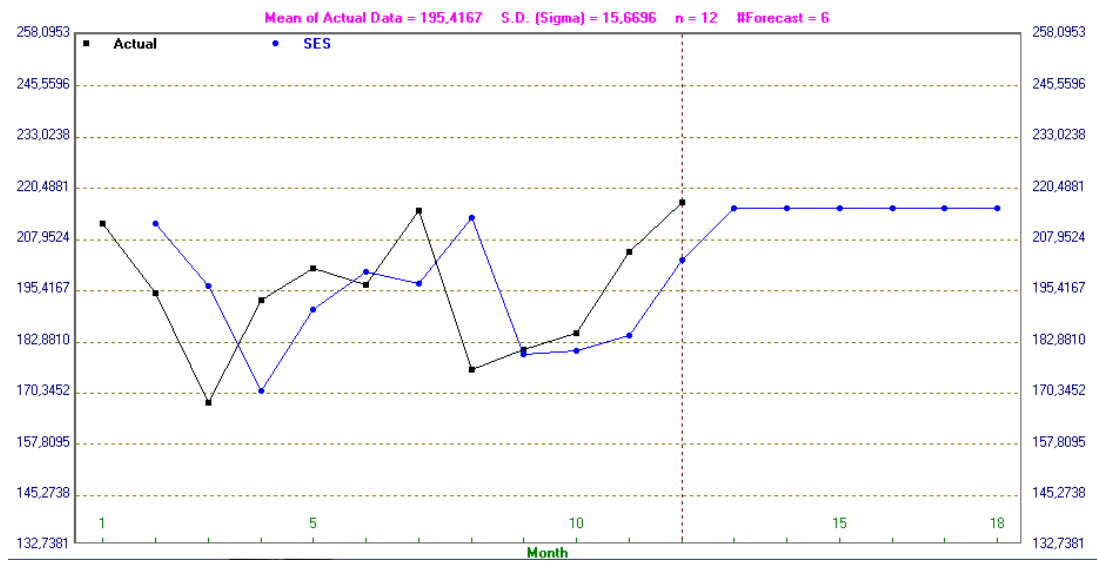
➤ *Moving average (MA)*

12-18-2017 Month	Actual Data	Forecast by 3-MA	Forecast Error	CFE	MAD	MSE	MAPE (%)	Tracking Signal	R-square
1	212								
2	195								
3	168								
4	193	191,6667	1,333328	1,333328	1,333328	1,777764	0,6908436	1	
5	201	185,3333	15,66667	17	8,5	123,6112	4,242604	2	
6	197	187,3333	9,666672	26,66667	8,88889	113,5556	4,464049	3	
7	215	197	18	44,66667	11,16667	166,1667	5,44106	4	
8	176	204,3333	-28,33333	16,33334	14,6	293,4889	7,572544	1,118722	0,365163
9	181	196	-15	1,333344	14,66667	282,0741	7,691669	9,090978E-02	0,2459292
10	185	190,6667	-5,666672	-4,333328	13,38095	246,3651	7,03044	-0,323843	0,2396723
11	205	180,6667	24,33333	20	14,75	289,5833	7,635374	1,355932	0,3670187
12	217	190,3333	26,66667	46,66667	16,07407	336,4198	8,15242	2,903226	0,3807232
13		202,3333							
14		202,3333							
15		202,3333							
16		202,3333							
17		202,3333							
18		202,3333							
CFE		46,66667							
MAD		16,07407							
MSE		336,4198							
MAPE		8,15242							
Trk.Signal		2,903226							
R-square		0,3807232							



➤ *Singel exponential smoting (SES)*

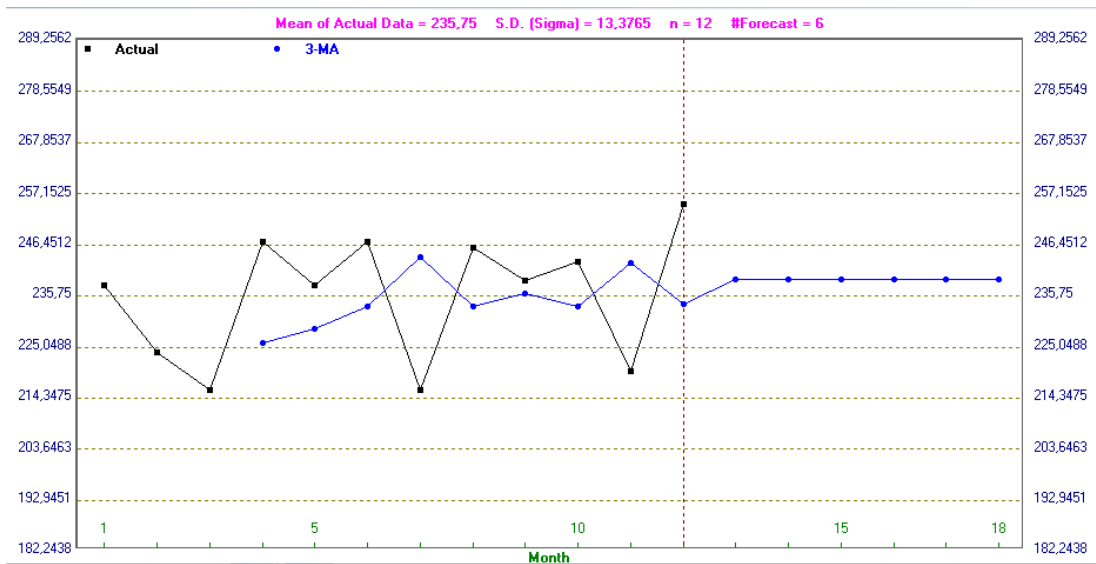
12-18-2017 Month	Actual Data	Forecast by SES	Forecast Error	CFE	MAD	MSE	MAPE (%)	Tracking Signal	R-square
1	212								
2	195	212	-17	-17	17	289	8,717949	-1	
3	168	196,7	-28,7	-45,7	22,85	556,3449	12,90064	-2	
4	193	170,87	22,13	-23,56999	22,61	534,1423	12,42253	-1,042459	
5	201	190,787	10,213	-13,35699	19,51075	426,6831	10,58717	-0,6845967	
6	197	199,9787	-2,978699	-16,33569	16,20434	343,121	8,772146	-1,008106	
7	215	197,2979	17,70213	1,36644	16,45397	338,1617	8,68238	0,0830462	0,7855694
8	176	213,2298	-37,22978	-35,86334	19,42195	487,861	10,46394	-1,846537	0,9493673
9	181	179,723	1,277023	-34,58632	17,15383	427,0822	9,244138	-2,016245	
10	185	180,8723	4,127701	-30,45862	15,70648	381,5218	8,464921	-1,939239	
11	205	184,5872	20,41277	-10,04585	16,17711	385,0377	8,614173	-0,6209918	0,9636276
12	217	202,9587	14,04128	3,995422	15,98294	367,9576	8,419306	0,2499804	0,7652215
13		215,5959							
14		215,5959							
15		215,5959							
16		215,5959							
17		215,5959							
18		215,5959							
CFE		3,995422							
MAD		15,98294							
MSE		367,9576							
MAPE		8,419306							
Trk. Signal		0,2499804							
R-square		0,7652215							



2. Perhitungan peramalan pada sandal jepit pria

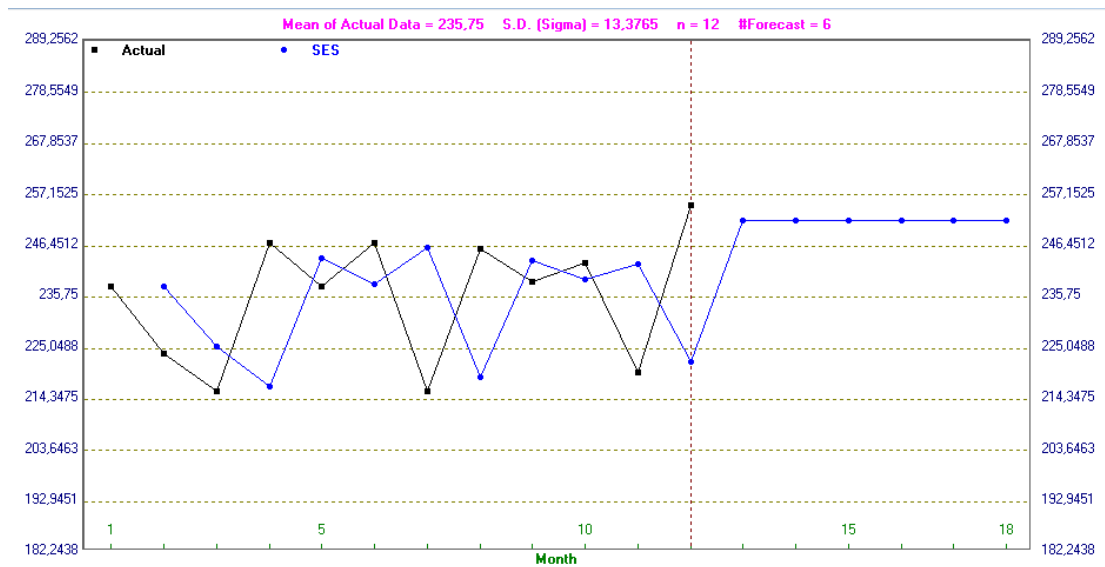
- Moving average (MA)

12-18-2017 Month	Actual Data	Forecast by 3-MA	Forecast Error	CFE	MAD	MSE	MAPE (%)	Tracking Signal	R-square
1	238								
2	224								
3	216								
4	247	226	21	21	21	441	8,502025	1	
5	238	229	9	30	15	261	6,141768	2	
6	247	233,6667	13,33333	43,33333	14,44444	233,2592	5,893882	3	
7	216	244	-28	15,33333	17,83333	370,9444	7,661152	0,8598129	0,381793
8	246	233,6667	12,33333	27,66666	16,73333	327,1777	7,131631	1,653386	0,480507
9	239	236,3333	2,66667	30,33333	14,38889	273,8333	6,128986	2,108108	0,4919432
10	243	233,6667	9,333328	39,66666	13,66667	247,1587	5,802114	2,902439	0,5807822
11	220	242,6667	-22,66667	16,99998	14,79167	280,4861	6,364728	1,149295	0,2850655
12	255	234	21	37,99998	15,48148	298,321	6,572569	2,454545	0,3170812
13		239,3333							
14		239,3333							
15		239,3333							
16		239,3333							
17		239,3333							
18		239,3333							
CFE		37,99998							
MAD		15,48148							
MSE		298,321							
MAPE		6,572569							
Trk. Signal		2,454545							
R-square		0,3170812							



➤ Singel exponential smoting (SES)

12-18-2017 Month	Actual Data	Forecast by SES	Forecast Error	CFE	MAD	MSE	MAPE (%)	Tracking Signal	R-square
1	238								
2	224	238	-14	-14	14	196	6,25	-1	
3	216	225,4	-9,399994	-23,39999	11,7	142,1799	5,300924	-2	
4	247	216,94	30,06	6,660004	17,82	395,9878	7,59063	0,3737376	0,4621691
5	238	243,994	-5,994003	0,6660004	14,8635	305,9728	6,322594	4,480778E-02	0,7723036
6	247	238,5994	8,400604	9,066605	13,57092	258,8923	5,738286	0,6680906	0,6542606
7	216	246,1599	-30,15994	-21,09334	16,33576	367,3473	7,109061	-1,291237	0,6794215
8	246	219,016	26,98401	5,890671	17,85694	418,8886	7,660496	0,3298814	0,695823
9	239	243,3016	-4,301605	1,589066	16,16252	368,8405	6,927914	9,831794E-02	0,7563411
10	243	239,4302	3,569839	5,158905	14,76333	329,2742	6,321375	0,3494404	0,7388998
11	220	242,643	-22,64302	-17,48412	15,5513	347,6174	6,718466	-1,124286	0,6967915
12	255	222,2643	32,7357	15,25159	17,11352	413,4364	7,274745	0,8912011	0,6234826
13		251,7264							
14		251,7264							
15		251,7264							
16		251,7264							
17		251,7264							
18		251,7264							
CFE		15,25159							
MAD		17,11352							
MSE		413,4364							
MAPE		7,274745							
Trk.Signal		0,8912011							
R-square		0,6234826							



LAMPIRAN 3 (Gambar Produk)



Sandal Jepit Pria



Sandal Jepit Wanita