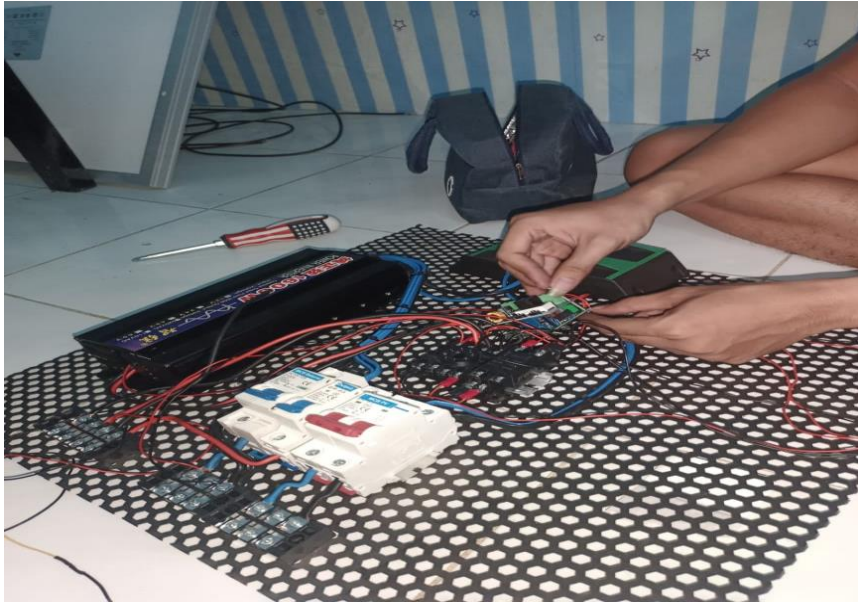


## LAMPIRAN

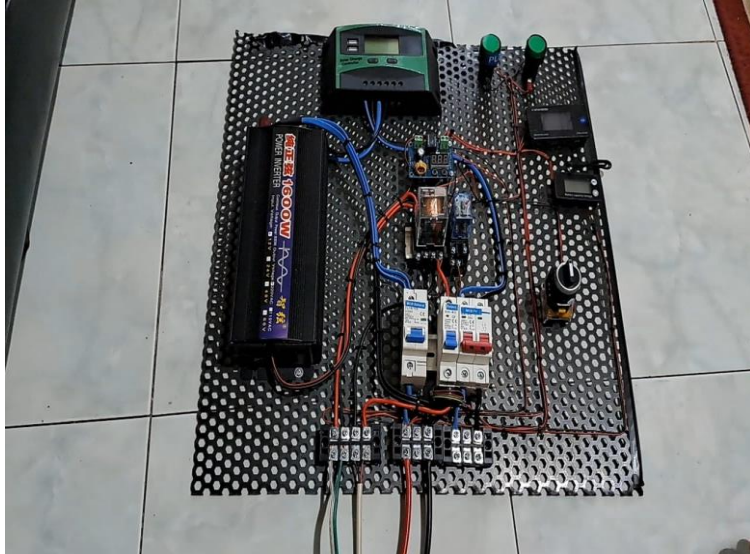
**Lampiran Gambar 1 Perakitan PLTS Hybrid**



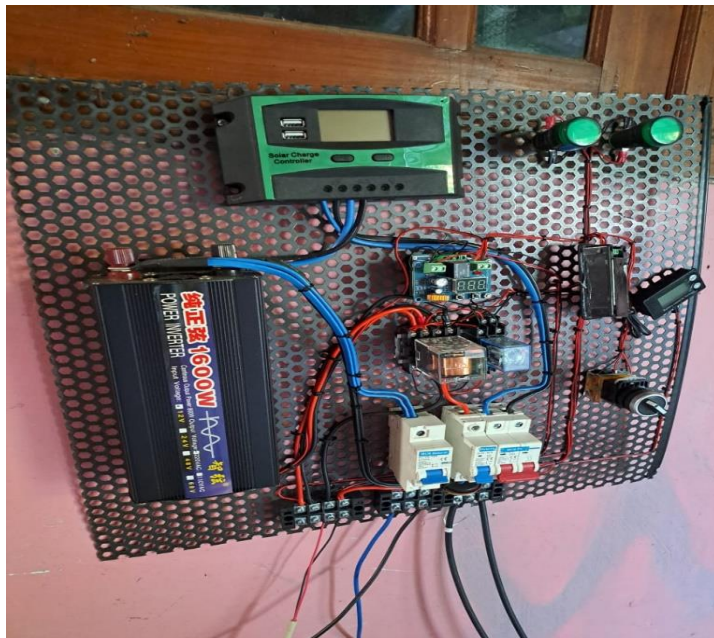
**Lampiran Gambar 2 Pemasangan Inverter, SCC, dan ATS**



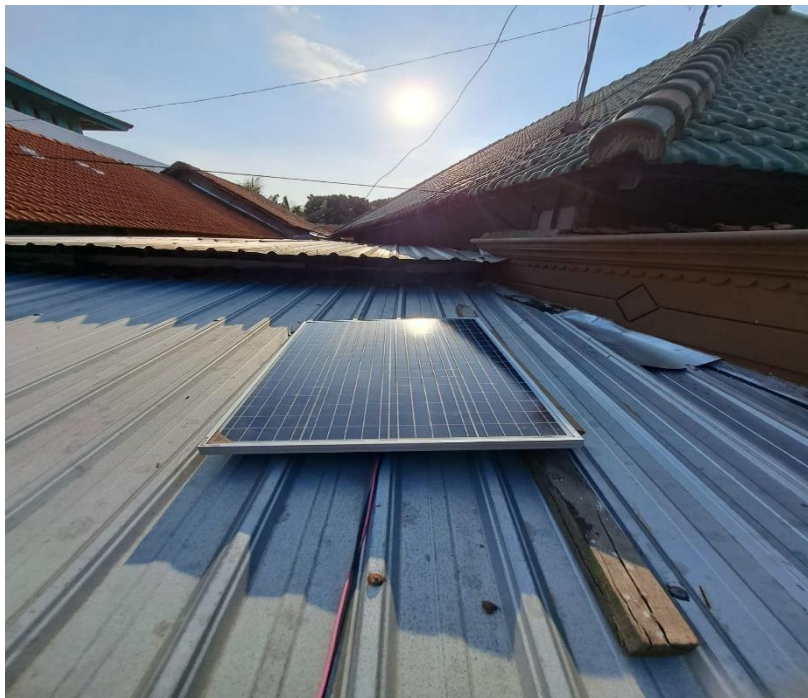
### Lampiran Gambar 3 Tahap Penyelesaian



### Lampiran Gambar 4 Pemasangan Alat PLTS



**Lampiran Gambar 5 Pemasangan Panel Surya di Atap Rumah**



Lampiran Gambar 6 Pengukuran Tegangan dan Arus Panel Surya

