

LAMPIRAN

| Kolom | K1 A | | K1 B | |
|---------------|-------------|-------------|--------------|--------------|
| | Tumpuan | Lapangan | Tumpuan | Lapangan |
| Jamban | | | | |
| Dimensi | 350 x 700 | 350 x 700 | 350 x 700 | 350 x 700 |
| Tulangan | 3 D 22 | 3 D 22 | 3 D 22 | 3 D 22 |
| Tulangan | 3 D 22 | 3 D 22 | 3 D 22 | 3 D 22 |
| Reinforcement | 3 Ø 12 - 02 | 3 Ø 12 - 02 | 3 Ø 12 - 100 | 3 Ø 12 - 150 |

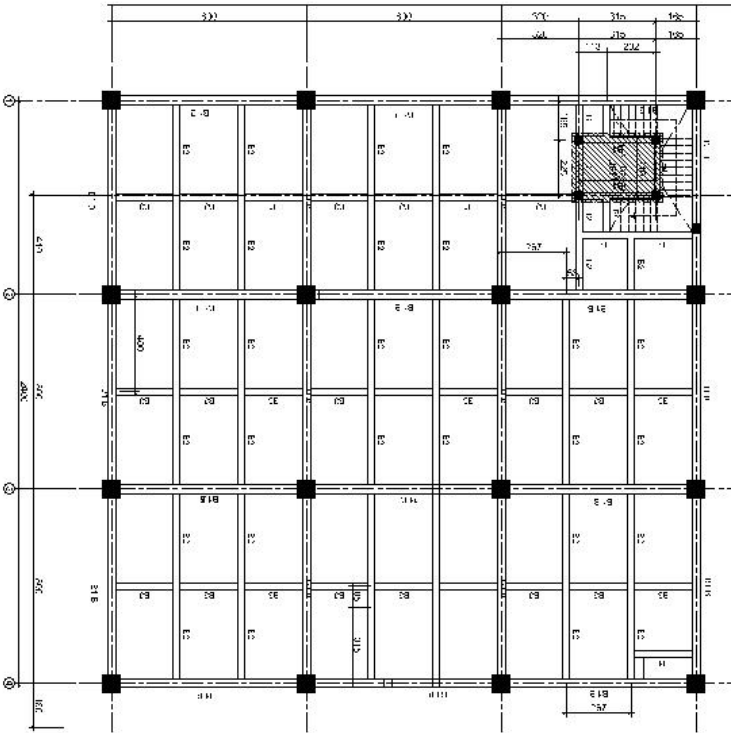
- mutu beton $f_c' = 25$ Mpa
 - mutu baja polos BJ 1 P 280
 - mutu baja ulir BJ TS 420
 - selimut beton 40 mm

| Kolom | B2 | | B3 | |
|---------|-----------|-----------|-----------|-----------|
| | Tumpuan | Lapangan | Tumpuan | Lapangan |
| Garasi | | | | |
| Dimensi | 300 x 600 | 300 x 600 | 250 x 400 | 250 x 400 |

JENIS BALOK
SKALA 1 : 150

| Balok | K1 A | K1 B | K2 |
|---------------|------------|-----------|------------|
| | Dimensi | 700 x 700 | 700 x 700 |
| Tulangan | 15 D 22 | 15 D 22 | 8 D 15 |
| Reinforcement | Ø 12 - 100 | Ø 12 - 03 | Ø 12 - 100 |

TABEL PENULANGAN KOLOM
N.T.S



DENAH BALOK LANTAI ATAP (ELV. +18.00)
SKALA 1 : 100

| No | Uraian | Volume (m ³) | Volume (m ³) | Volume (m ³) | Volume (m ³) |
|----|--------|--------------------------|--------------------------|--------------------------|--------------------------|
| 1 | 1000 | 200,000 | 200,000 | 200,000 | 200,000 |
| 2 | 1000 | 200,000 | 200,000 | 200,000 | 200,000 |
| 3 | 1000 | 200,000 | 200,000 | 200,000 | 200,000 |
| 4 | 1000 | 200,000 | 200,000 | 200,000 | 200,000 |
| 5 | 1000 | 200,000 | 200,000 | 200,000 | 200,000 |
| 6 | 1000 | 200,000 | 200,000 | 200,000 | 200,000 |
| 7 | 1000 | 200,000 | 200,000 | 200,000 | 200,000 |
| 8 | 1000 | 200,000 | 200,000 | 200,000 | 200,000 |
| 9 | 1000 | 200,000 | 200,000 | 200,000 | 200,000 |
| 10 | 1000 | 200,000 | 200,000 | 200,000 | 200,000 |
| 11 | 1000 | 200,000 | 200,000 | 200,000 | 200,000 |
| 12 | 1000 | 200,000 | 200,000 | 200,000 | 200,000 |

| No | Uraian | Volume (m ³) | Volume (m ³) | Volume (m ³) | Volume (m ³) |
|----|--------|--------------------------|--------------------------|--------------------------|--------------------------|
| 1 | 1000 | 200,000 | 200,000 | 200,000 | 200,000 |
| 2 | 1000 | 200,000 | 200,000 | 200,000 | 200,000 |
| 3 | 1000 | 200,000 | 200,000 | 200,000 | 200,000 |
| 4 | 1000 | 200,000 | 200,000 | 200,000 | 200,000 |
| 5 | 1000 | 200,000 | 200,000 | 200,000 | 200,000 |
| 6 | 1000 | 200,000 | 200,000 | 200,000 | 200,000 |
| 7 | 1000 | 200,000 | 200,000 | 200,000 | 200,000 |
| 8 | 1000 | 200,000 | 200,000 | 200,000 | 200,000 |
| 9 | 1000 | 200,000 | 200,000 | 200,000 | 200,000 |
| 10 | 1000 | 200,000 | 200,000 | 200,000 | 200,000 |
| 11 | 1000 | 200,000 | 200,000 | 200,000 | 200,000 |
| 12 | 1000 | 200,000 | 200,000 | 200,000 | 200,000 |

| No | Uraian | Volume (m ³) | Volume (m ³) | Volume (m ³) | Volume (m ³) |
|----|--------|--------------------------|--------------------------|--------------------------|--------------------------|
| 1 | 1000 | 200,000 | 200,000 | 200,000 | 200,000 |
| 2 | 1000 | 200,000 | 200,000 | 200,000 | 200,000 |
| 3 | 1000 | 200,000 | 200,000 | 200,000 | 200,000 |
| 4 | 1000 | 200,000 | 200,000 | 200,000 | 200,000 |
| 5 | 1000 | 200,000 | 200,000 | 200,000 | 200,000 |
| 6 | 1000 | 200,000 | 200,000 | 200,000 | 200,000 |
| 7 | 1000 | 200,000 | 200,000 | 200,000 | 200,000 |
| 8 | 1000 | 200,000 | 200,000 | 200,000 | 200,000 |
| 9 | 1000 | 200,000 | 200,000 | 200,000 | 200,000 |
| 10 | 1000 | 200,000 | 200,000 | 200,000 | 200,000 |
| 11 | 1000 | 200,000 | 200,000 | 200,000 | 200,000 |
| 12 | 1000 | 200,000 | 200,000 | 200,000 | 200,000 |



PT. BINA HARAPAN
Jl. Raya ...
No. ...
Kec. ...
Kab. ...
Prov. ...

REVISI
No. ...
Tgl. ...

PERMITSI DAN BUKU BANGUNAN
No. ...
Tgl. ...

REVISI
No. ...
Tgl. ...

REVISI
No. ...
Tgl. ...

REVISI
No. ...
Tgl. ...

REVISI
No. ...
Tgl. ...

REVISI
No. ...
Tgl. ...

REVISI
No. ...
Tgl. ...

REVISI
No. ...
Tgl. ...

REVISI
No. ...
Tgl. ...

REVISI
No. ...
Tgl. ...

REVISI
No. ...
Tgl. ...

REVISI
No. ...
Tgl. ...

REVISI
No. ...
Tgl. ...

REVISI
No. ...
Tgl. ...

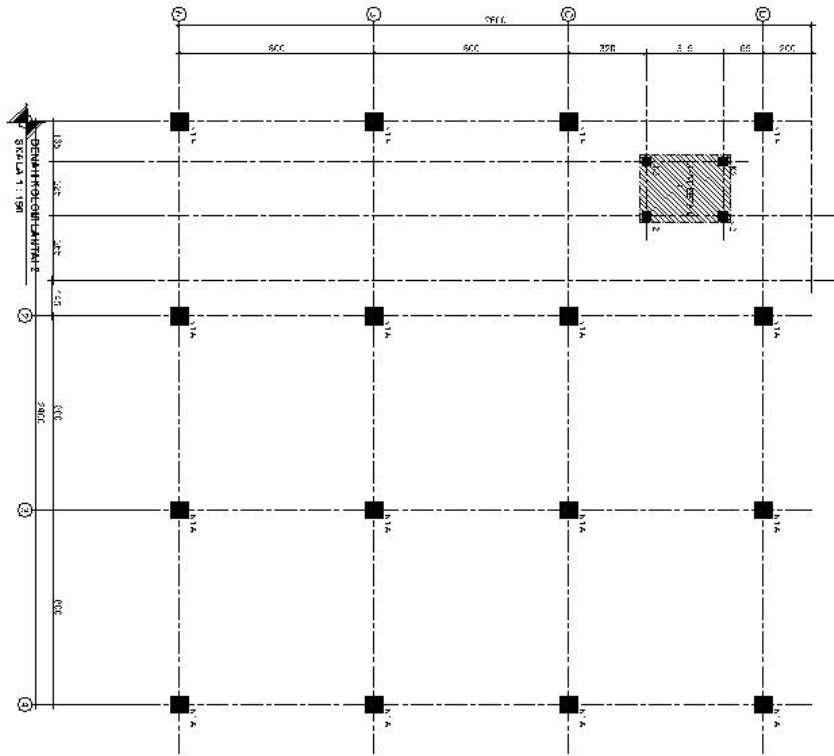
REVISI
No. ...
Tgl. ...

REVISI
No. ...
Tgl. ...

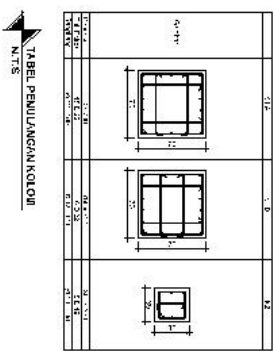
REVISI
No. ...
Tgl. ...

REVISI
No. ...
Tgl. ...

REVISI
No. ...
Tgl. ...

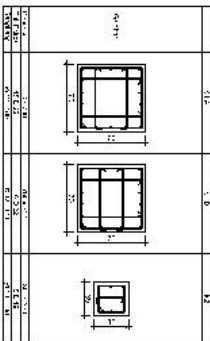
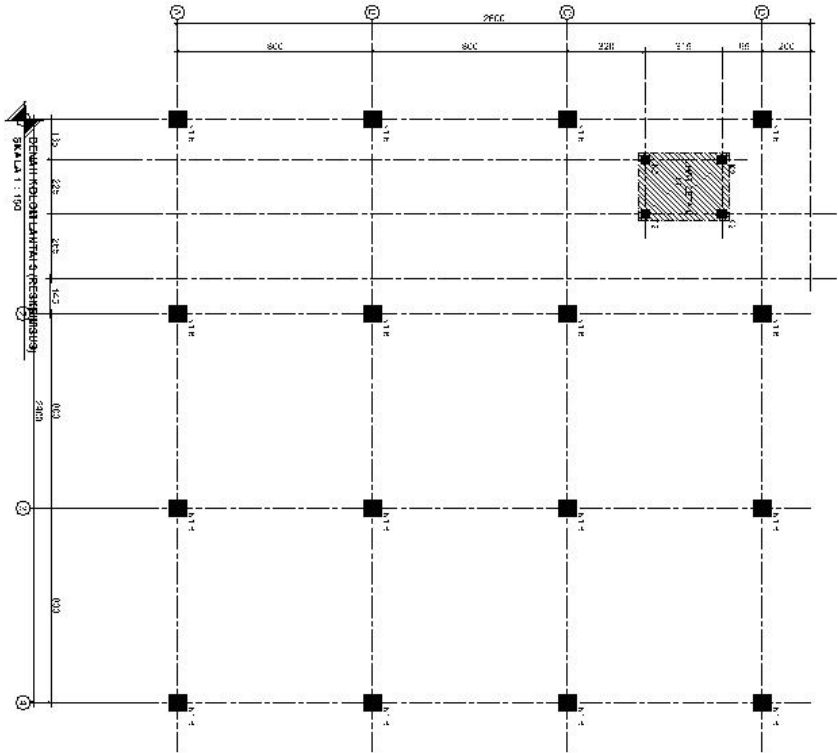


| | |
|---|-----------------|
| DENAH LANTAI 1 1.000 x 1.000 m 1.000 x 1.000 m 1.000 x 1.000 m | |
| NO. 1 | 1.000 x 1.000 m |
| NO. 2 | 1.000 x 1.000 m |
| NO. 3 | 1.000 x 1.000 m |
| NO. 4 | 1.000 x 1.000 m |



TABEL PENJAJANGAN KOLOM
N.T.S.

| | |
|--|--|
| UNIVERSITAS BINA SARANA INOVASI INSTITUT TEKNIK SEPuluh SURABAYA | |
| FAKULTAS TEKNIK SIPIL DAN PERENCANAAN JURUSAN TEKNIK SIPIL | |
| DESAIN DAN PERENCANAAN STRUKTUR BANGUNAN | |
| DIBUAT OLEH: NAMA: ... NO. Matrik: ... | |
| JUDUL GAMBAR: ... | |
| NAMA: ... NO. Matrik: ... | |



TABEL PENUANGKAPAN KOLOID
N.T.S

| REVISI | | REVISI | REVISI |
|--------|--------|--------|--------|
| 1 | REVISI | 1 | REVISI |
| 2 | REVISI | 2 | REVISI |
| 3 | REVISI | 3 | REVISI |



SEKOLAH KEBANGSAAN
"RIK" SAMPURU
KABUPATEN TANA TANA
PROVINSI KALIMANTAN UTARA

TUGAS KURSUS

RENOVASI DAN PEREKONSTRUKSI

TUGAS KURSUS

RENOVASI DAN PEREKONSTRUKSI

TUGAS KURSUS

RENOVASI DAN PEREKONSTRUKSI

TUGAS KURSUS

RENOVASI DAN PEREKONSTRUKSI

TUGAS KURSUS

RENOVASI DAN PEREKONSTRUKSI

TUGAS KURSUS

RENOVASI DAN PEREKONSTRUKSI

TUGAS KURSUS

RENOVASI DAN PEREKONSTRUKSI

TUGAS KURSUS

RENOVASI DAN PEREKONSTRUKSI

TUGAS KURSUS

RENOVASI DAN PEREKONSTRUKSI

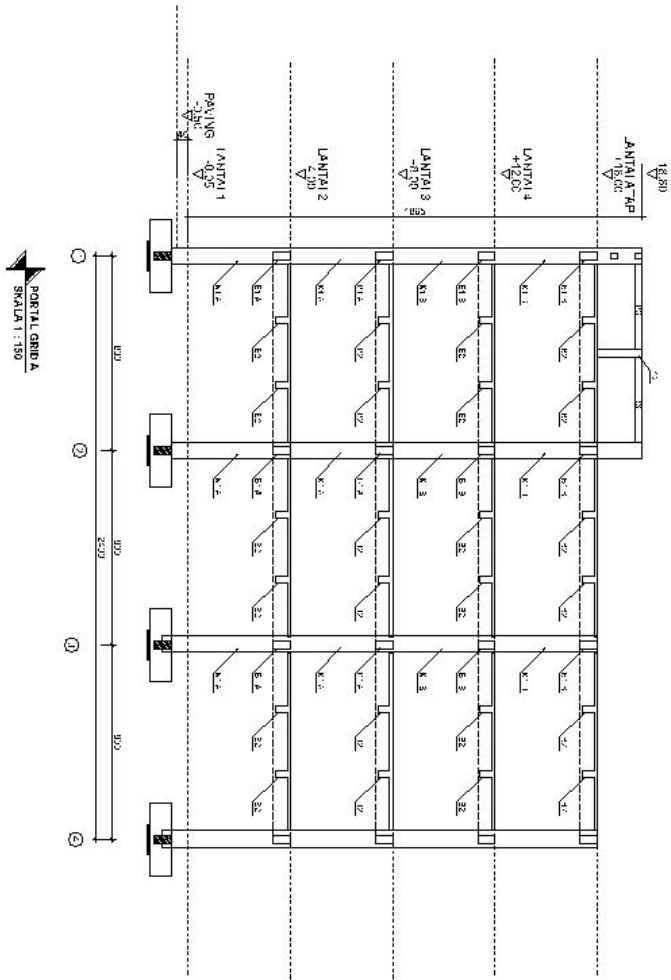
TUGAS KURSUS

RENOVASI DAN PEREKONSTRUKSI

TUGAS KURSUS

RENOVASI DAN PEREKONSTRUKSI

TUGAS KURSUS



REKAYASA
 S1
 S2
 S3
 S4
 S5

PROGRAM STUDI
 TEKNIK SIPIL

FAKULTAS TEKNIK
 PERTAMBANGAN

JURUSAN TEKNIK SIPIL
 DAN PERENCANAAN

JALAN SENEWATI
 NO. 125, BANDUNG 40132

TEL. (022) 2537312
 FAX. (022) 2537312

WWW.PURBAPADA.CO.ID

WWW.PURBAPADA.CO.ID

WWW.PURBAPADA.CO.ID

WWW.PURBAPADA.CO.ID

WWW.PURBAPADA.CO.ID

WWW.PURBAPADA.CO.ID

WWW.PURBAPADA.CO.ID

WWW.PURBAPADA.CO.ID

WWW.PURBAPADA.CO.ID

WWW.PURBAPADA.CO.ID

WWW.PURBAPADA.CO.ID

WWW.PURBAPADA.CO.ID

WWW.PURBAPADA.CO.ID

WWW.PURBAPADA.CO.ID

WWW.PURBAPADA.CO.ID

ORIGINALITY REPORT

14%

SIMILARITY INDEX

15%

INTERNET SOURCES

3%

PUBLICATIONS

18%

STUDENT PAPERS

PRIMARY SOURCES

| | | |
|---|--|----|
| 1 | Submitted to Universitas 17 Agustus 1945 Surabaya Student Paper | 5% |
| 2 | herbycalvinpascal.files.wordpress.com Internet Source | 1% |
| 3 | repository.untag-sby.ac.id Internet Source | 1% |
| 4 | Submitted to Universitas Bung Hatta Student Paper | 1% |
| 5 | tekonsipil.sv.ugm.ac.id Internet Source | 1% |
| 6 | repository.ummat.ac.id Internet Source | 1% |
| 7 | eprints.itn.ac.id Internet Source | 1% |
| 8 | repository.podomorouniversity.ac.id Internet Source | 1% |
| 9 | repository.its.ac.id Internet Source | 1% |

10 Submitted to Sultan Agung Islamic University 1 %
Student Paper

11 Submitted to North South University 1 %
Student Paper

12 eprints.umm.ac.id 1 %
Internet Source

Exclude quotes On

Exclude matches < 1%

Exclude bibliography On