

LAMPIRAN

Pembuatan Mesin Perontok Padi



Perakitan silinder perontok



Uji assembly rangka per-part

pemasangan mata pisau berbentuk kotak



Menyeting mata pisau berbentuk kotak





Menentukan putaran Rpm pada mesin



Mata pisau berbentuk kotak



Gambar mesin perontok padi tampak samping

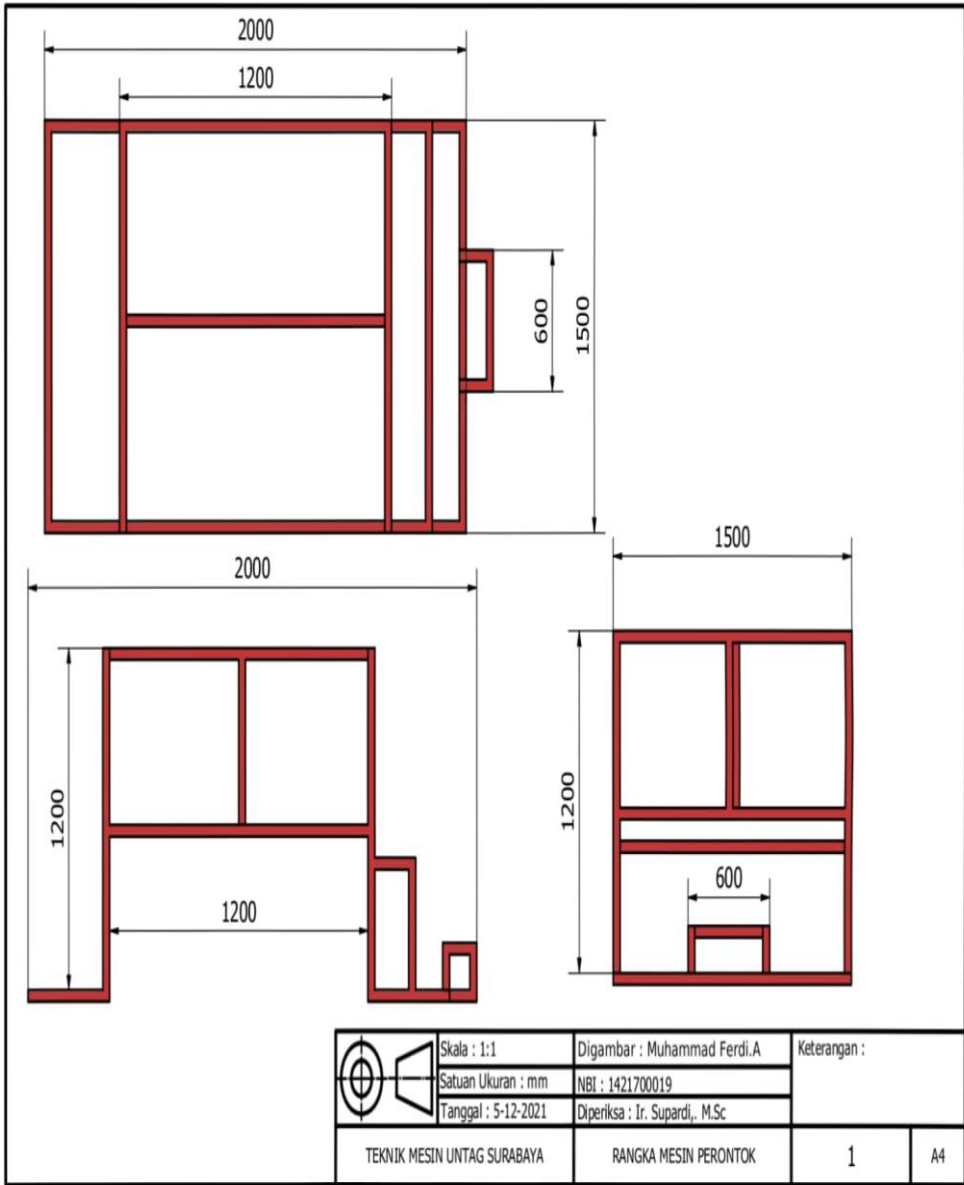


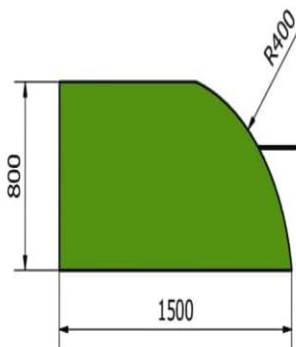
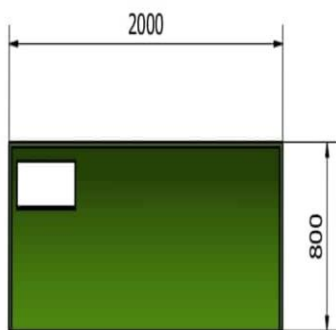
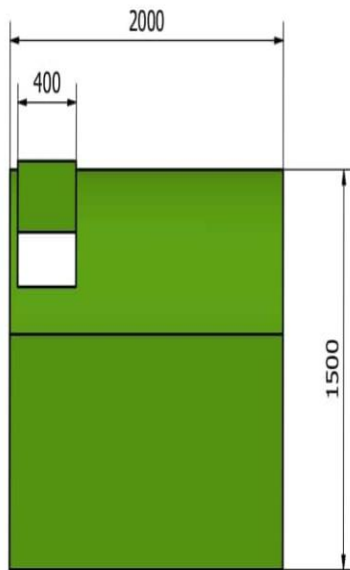
Gambar mesin perontok padi tampak depan



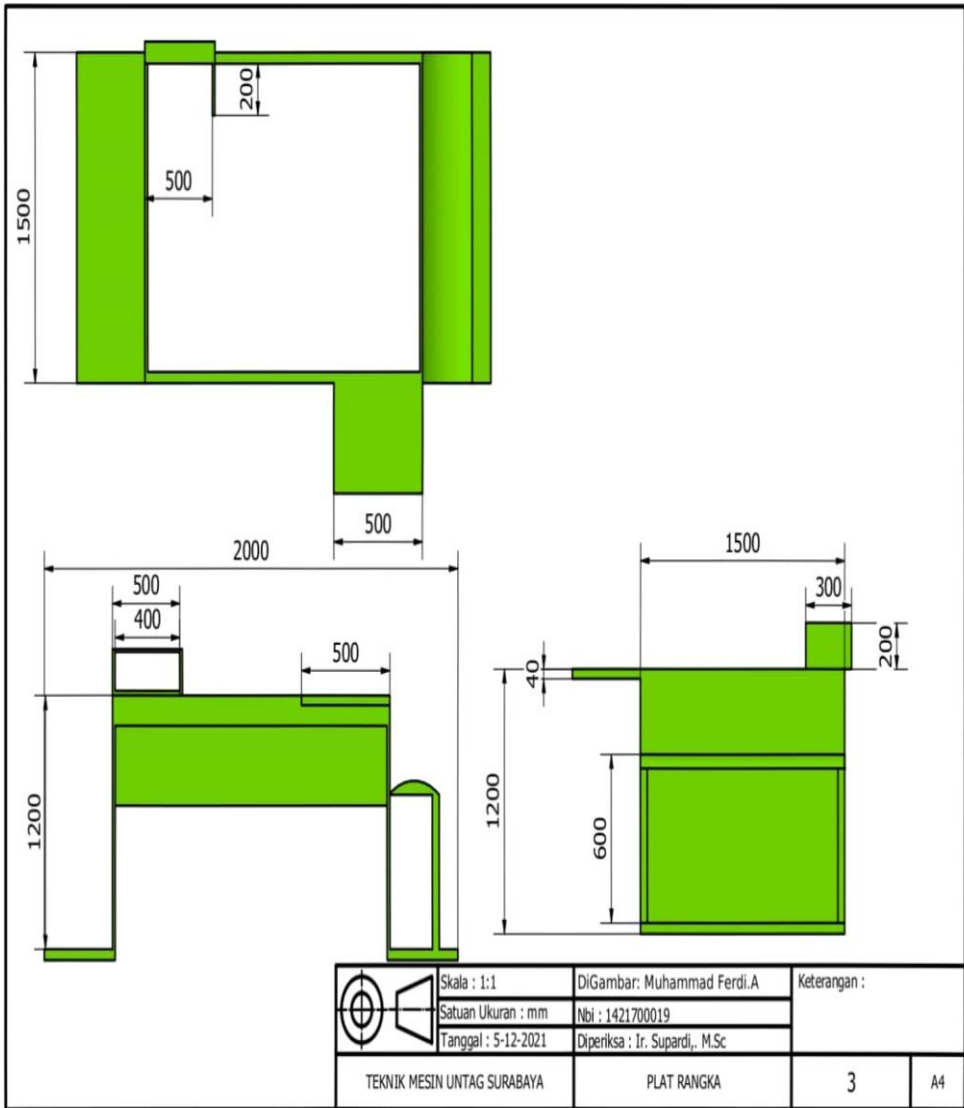


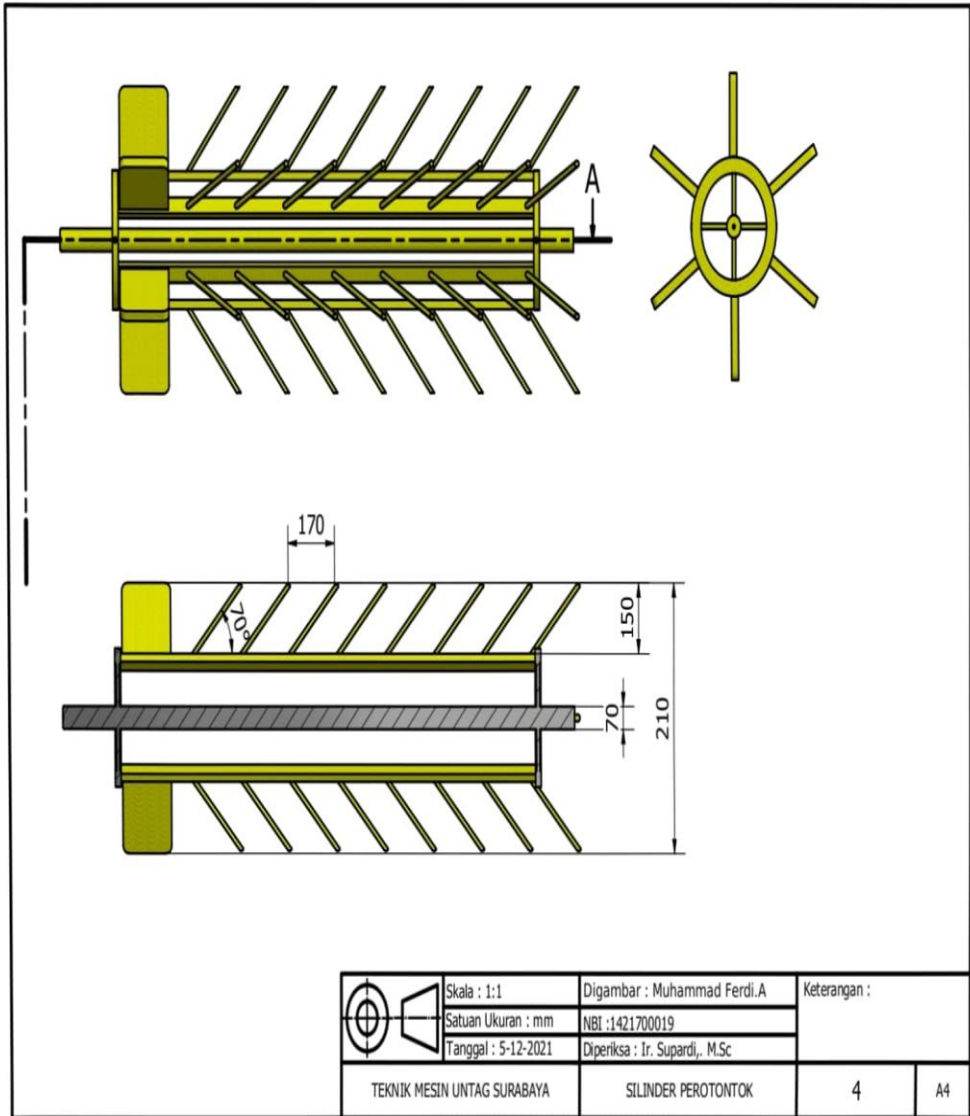
Gambar mesin perontok padi tampak belakang

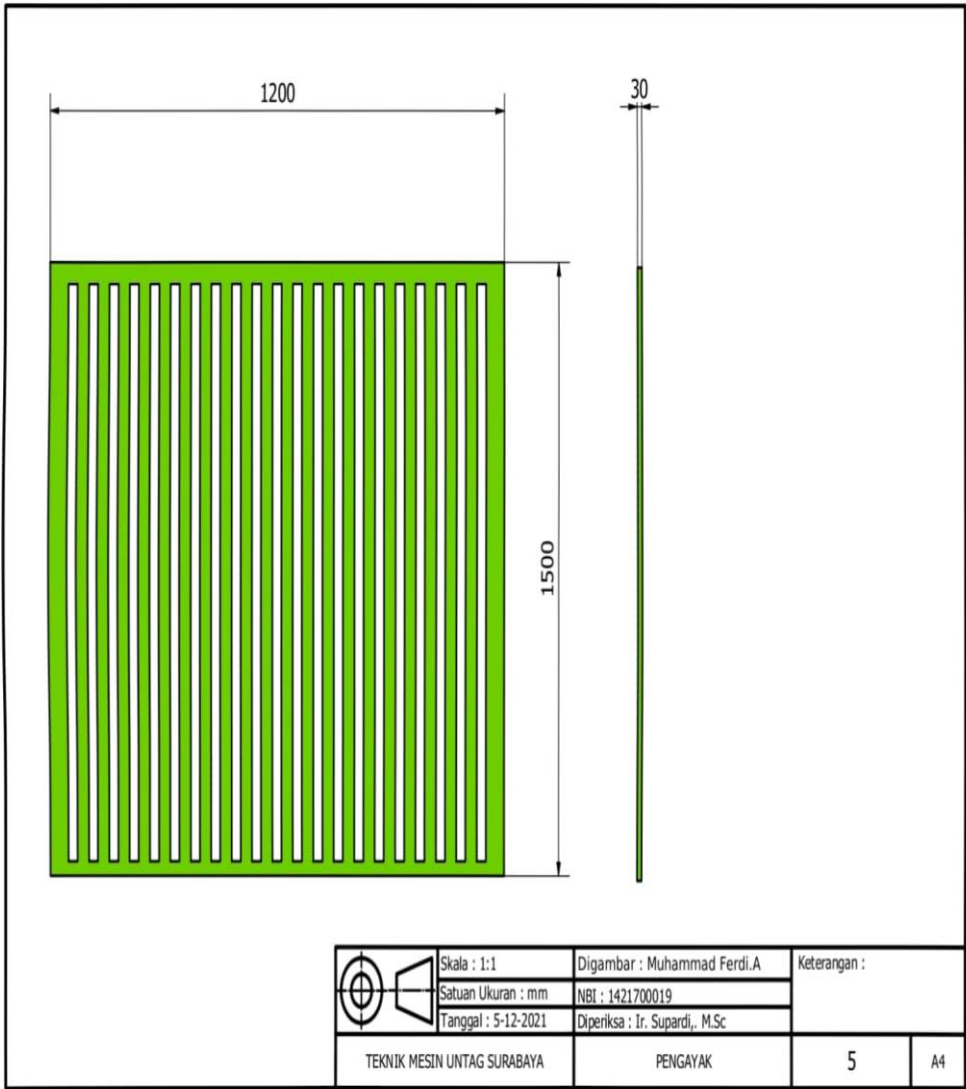


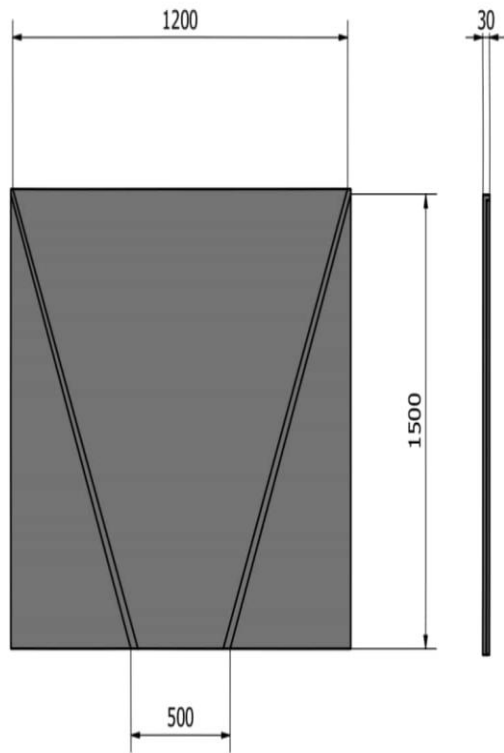


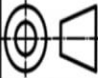
	Skala : 1:1	Digambar : Muhammad Ferdi. A	Keterangan :	
	Satuan Ukuran : mm	NBI : 1421700019		
	Tanggal : 5-12-2021	Diperiksa : Ir. Supardi, M.Sc		
TEKNIK MESIN UNTAG SURABAYA	CAP ATAS MESIN PERONTOK	2	A4	

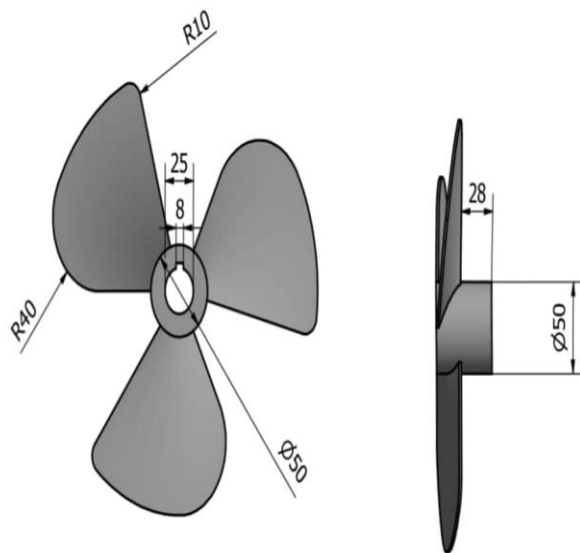








	Skala : 1:1	Digambar : Muhammad Ferdi.A	Keterangan :	
	Satuan Ukuran : mm	NBI : 1421700019		
	Tanggal : 5-12-2021	Diperiksa : Ir. Supardi, M.Sc		
TEKNIK MESIN UNTAG SURABAYA	PLAT OUT	6	A4	



	Skala : 1:1	Digambar : Muhammad Ferdi.A	Keterangan :	
	Satuan Ukuran : mm	NBI : 1421700019		
	Tanggal : 5-12-2021	Diperiksa : Ir. Supardi, M.Sc		
TEKNIK MESIN UNTAG SURABAYA	PROPELER	7	A4	