

**APPENDIX I**  
**FORM SURVEY**

<b>BALAI PELAKSANAAN JALAN NASIONAL JAWA TIMUR -BALI</b>	PROVINCE : JAWA TIMUR		STREET NAME: LAMONGAN - GRESIK		PAGE: 1 FROM: 20				
	KOD/KOT/KAB : LAMONGAN				DATE: 25 March 2022				
	DISTRICT : LAMONGAN		DIRECTION TO BABAT →		SURVEYOR : TRIO DIMAS				
<b>STA</b>	PAVEMENT SURFACE					TIPE :		FLEXIBLE	
	POTHOLE	PATCHING	CRACK		RUTTING		DEPRESSION		
	LARGE	LARGE	TIPE	WIDE	LARGE	LARGE	WITHIN	LONG	LARGE
	(m <sup>2</sup> )	(m <sup>2</sup> )		(mm)	(m <sup>2</sup> )	(m <sup>2</sup> )	(mm)	(m)	(m <sup>2</sup> )
45+200- 45+300			AC		3.375				
			AC		3.85				
			AC		19.5				
			AC		3.48				
			AC		1.68				
	0.007		MM		1.05				
	0.0021								
45+300 – 45+ 400		1.17	AC		33.99				
	0.021		AC		1.875				
			AC		0.325				
						0.0018	1		
						0.001	1		
						0.0104	1		

BALAI PELAKSANAAN JALAN NASIONAL JAWA TIMUR -BALI		PROVINCE : JAWA TIMUR		ROAD NAME : LAMONGAN - GRESIK			PAGE : 2 DARI: 20		
		KOD/KOT/KAB : LAMONGAN				DATE : 25 March 2022			
		DISTRICT : LAMONGAN		DIRECTION TO BABAT →		SURVEYOR : TRIO DIMAS			
STA	PAVEMENT SURFACE						TIPE :	FLEXIBLE	
	POTHOLE	PATCHING	CRACKING		RUTTING		DEPRESSION		
	LARGE	LARGE	TIPE	WIDE	LARGE	LARGE	WITHIN	PANJANG	LARGE
	(m <sup>2</sup> )	(m <sup>2</sup> )		(mm)	(m <sup>2</sup> )	(m <sup>2</sup> )	(mm)	(m)	(m <sup>2</sup> )
45+400- 45+500	0.0216	11.46	AC	4.6		0.4368		7.15	0.0501
	0.027		Ac	3.43				8.15	0.0245
	0.0175		AC	5.6				0.5	0.0015
45+500 – 45+ 600	0.0744	19.68	AC	14.4		0.4368	14		
	0.4125	10.37	Ac	5.136		0.0056	1		
		15.96	AC	1.625		0.0323	1		
			AC	1.28		0.0094	1		
			AC	25.92					
			MM	10.08					
45+600 – 45+ 700	0.1764	8.19	AC	75.6		0.3159	15		
		8.755	AC	1.68					
			AC	44.2					
			AC	11.5					
			AC	7.93					

BALAI PELAKSANAAN JALAN NASIONAL JAWA TIMUR -BALI		PROVINCE : JAWA TIMUR		ROAD NAME : LAMONGAN - GRESIK		PAGE : 3 DARI: 20				
		KOD/KOT/KAB : LAMONGAN				DATE : 25 March 2022				
		DISTRICT : LAMONGAN		DIRECTION TO BABAT →		SURVEYOR : TRIO DIMAS				
STA	PAVEMENT SURFACE						TIPE :	FLEXIBLE		
	POTHOLE	PATCHING	CRACKING			RUTTING		DEPRESSION		
	LARGE	LARGE	TIPE	WIDE	LARGE	LARGE	WITHIN	PANJANG	LARGE	
	(m <sup>2</sup> )	(m <sup>2</sup> )		(mm)	(m <sup>2</sup> )	(m <sup>2</sup> )	(mm)	(m)	(m <sup>2</sup> )	
45+600 – 45+ 700		AC	25.5							
		AC	53.6							
45+700- 45+800	0.0032		AC	7.875				2.5	0.0438	
	0.0143		JRC	12				1.3	0.0169	
	0.005							8.4	0.1638	
	0.0032							1.7	0.0165	
45+800 – 45+ 900	0.006	14.52	AC	3.44						
	0.0212		AC	7.49						
			LTC	3.385						
			LTC	0.28						
			LTC	0.33						
			JRC	8.4						
						0.0012	1			
						0.0021	5			
					0.0012	5				

BALAI PELAKSANAAN JALAN NASIONAL JAWA TIMUR -BALI	PROVINCE : JAWA TIMUR	ROAD NAME : LAMONGAN - GRESIK				PAGE : 4 DARI: 20				
	KOD/KOT/KAB : LAMONGAN					DATE : 25 March 2022				
	DISTRICT : LAMONGAN	DIRECTION TO BABAT →				SURVEYOR : TRIO DIMAS				
STA	PAVEMENT SURFACE						TIPE :	FLEXIBLE		
	POTHOLE	PATCHING	CRACKING			RUTTING		DEPRESSION		
	LARGE	LARGE	TIPE	WIDE	LARGE	LARGE	WITHIN	PANJANG	LARGE	
	(m <sup>2</sup> )	(m <sup>2</sup> )		(mm)	(m <sup>2</sup> )	(m <sup>2</sup> )	(mm)	(m)	(m <sup>2</sup> )	
45+900- 46+000		8.4	JRC	0.96		0.0584	2			
			JRC	27.3		0.4096	2			
			JRC	14.4		0.48	2			
						0.528	2			
46+000 – 46+ 100	0.011	0.9	AC	7.35		4.455	25			
		3.71	JRC	8.4						
		6.2	JRC	20.7						
	0.0026		AC	0.4		1.8018	2			
46+100 – 46+ 200	0.0105		AC	0.66		0.003	2			
	0.0017		AC	19		0.0005	2			
	0.0009		JRC	9.4						
	0.0108		JRC	25.3						
	0.018		JRC	25.3						
	0.0051									

BALAI PELAKSANAAN JALAN NASIONAL JAWA TIMUR -BALI	PROVINCE :JAWA TIMUR		ROAD NAME :LAMONGAN - GRESIK				PAGE : 5 DARI: 20			
	KOD/KOT/KAB : LAMONGAN						DATE : 25 March 2022			
	DISTRICT : LAMONGAN		DIRECTION TO BABAT →				SURVEYOR : TRIO DIMAS			
STA	PAVEMENT SURFACE						TIPE :	FLEXIBLE		
	POTHOLE	PATCHING	CRACKING		RUTTING		DEPRESSION			
	LARGE	LARGE	TIPE	WIDE	LARGE	LARGE	WITHIN	PANJANG	LARGE	
	(m <sup>2</sup> )	(m <sup>2</sup> )		(mm)	(m <sup>2</sup> )	(m <sup>2</sup> )	(mm)	(m)	(m <sup>2</sup> )	
46+200- 46+300	0.0063	2	JRC	0.04		0.663	15			
	0.012		AC	5.61						
	0.0045		AC	14.49						
			AC	2						
				16.1						
				21.76						
				7.2						
46+300 – 46+ 400	0.0128	2	AC	7.7		0.0018	1	0.45	0.0315	
	0.0048	13.8	AC	16.8		0.0012	1			
	0.0261	25.2	AC	1.44						
	0.0084	7.83	AC	11.6						
	0.0064		AC	3.68						
			AC	29.6						
			AC	2.1						

BALAI PELAKSANAAN JALAN NASIONAL JAWA TIMUR -BALI	PROVINCE : JAWA TIMUR		ROAD NAME : LAMONGAN - GRESIK		PAGE : 6 DARI: 20				
	KOD/KOT/KAB : LAMONGAN				DATE : 25 March 2022				
	DISTRICT : LAMONGAN		DIRECTION TO BABAT →		SURVEYOR : TRIO DIMAS				
STA	PAVEMENT SURFACE					TIPE :	FLEXIBLE		
	POTHOLE	PATCHING	CRACKING		RUTTING		DEPRESSION		
	LARGE	LARGE	TIPE	WIDE	LARGE	LARGE	WITHIN	PANJANG	LARGE
	(m <sup>2</sup> )	(m <sup>2</sup> )		(mm)	(m <sup>2</sup> )	(m <sup>2</sup> )	(mm)	(m)	(m <sup>2</sup> )
46+400- 46+500	0.0231		AC	72		0.8976	151		
	0.001		AC	4.92					
	0.006		AC	3.16					
			AC	2.9					
			AC	6.51					
			JRC	6					
			JRC	28.7					
46+500 – 46+ 600	0.0768		AC	0.84		0.0012	1		
	0.0693		AC	1.82		0.0025	5		
	0.0288		AC	5.85		0.3423	15		
			AC	47.68		0.228	12		
			AC	0.64		0.68	1		
			AC	4.845					

BALAI PELAKSANAAN JALAN NASIONAL JAWA TIMUR -BALI		PROVINCE : JAWA TIMUR		ROAD NAME : LAMONGAN - GRESIK			PAGE : 7 DARI: 20			
		KOD/KOT/KAB : LAMONGAN					DATE : 25 March 2022			
		DISTRICT : LAMONGAN		DIRECTION TO BABAT →			SURVEYOR : TRIO DIMAS			
STA	PAVEMENT SURFACE						TIPE :	FLEXIBLE		
	POTHOLE	PATCHING	CRACKING			RUTTING		DEPRESSION		
	LARGE	LARGE	TIPE	WIDE	LARGE	LARGE	WITHIN	PANJANG	LARGE	
	(m <sup>2</sup> )	(m <sup>2</sup> )		(mm)	(m <sup>2</sup> )	(m <sup>2</sup> )	(mm)	(m)	(m <sup>2</sup> )	
46+600- 46+700	0.038	50	AC	14.4		0.347	14	1.2	0.066	
	0.012	21	AC	2.65				1.4	0.224	
	0.006	24.48	AC	4.6						
	0.004		AC	1.4						
	0.025		AC	13.11						
			AC	8.32						
			AC	42.47						
46+700 – 46+ 800			JRC	7.2						
	0.008	5.04	AC	3.08		1.4	11			
	0.019		AC	0.9		0.283	15			
	0.008		AC	0.84						
	0.004		AC	0.21						
			RS	7.2						
			RS	10.1						
		LTC	1.4							

BALAI PELAKSANAAN JALAN NASIONAL JAWA TIMUR -BALI	PROVINCE : JAWA TIMUR	ROAD NAME : LAMONGAN - GRESIK					PAGE : 8 DARI: 20		
	KOD/KOT/KAB : LAMONGAN						DATE : 25 March 2022		
	DISTRICT : LAMONGAN	DIRECTION TO BABAT →					SURVEYOR : TRIO DIMAS		
STA	PAVEMENT SURFACE						TIPE :	FLEXIBLE	
	POTHOLE	PATCHING	CRACKING			RUTTING		DEPRESSION	
	LARGE	LARGE	TIPE	WIDE	LARGE	LARGE	WITHIN	PANJANG	LARGE
	(m <sup>2</sup> )	(m <sup>2</sup> )		(mm)	(m <sup>2</sup> )	(m <sup>2</sup> )	(mm)	(m)	(m <sup>2</sup> )
46+700 – 46+ 800		LTC	2.1						
		LTC	0.93						
46+800- 46+900	0.006	9.75	AC	10.56		2.4	2	0.5	0,8
	0.007	0.92	AC	1.6		2.2	11		
	0.008		AC	9.92					
	0.003		AC	18					
			AC	5.024					
			AC	3.36					
			AC	0.84					
			TLC	0.76					
			TLC	0.63					
			TLC	1.65					
			TLC	1.44					
			TLC	1.76					
		TLC	0.338						



BALAI PELAKSANAAN JALAN NASIONAL JAWA TIMUR -BALI	PROVINCE : JAWA TIMUR		ROAD NAME : LAMONGAN - GRESIK		PAGE : 9 DARI: 20				
	KOD/KOT/KAB : LAMONGAN				DATE : 25 March 2022				
	DISTRICT : LAMONGAN		DIRECTION TO BABAT →		SURVEYOR : TRIO DIMAS				
STA	PAVEMENT SURFACE						TIPE :	FLEXIBLE	
	POTHOLE	PATCHING	CRACKING		RUTTING		DEPRESSION		
	LARGE (m <sup>2</sup> )	LARGE (m <sup>2</sup> )	TIPE	WIDE (mm)	LARGE (m <sup>2</sup> )	LARGE (m <sup>2</sup> )	WITHIN (mm)	PANJANG (m)	LARGE (m <sup>2</sup> )
46+900- 47+000		0.84	AC	2.86		2.025	15		
			AC	5.13		0.767	11		
			AC	37.98		0.003	1		
			AC	4.2		0.001	1		
			AC	13.05					
			TLC	1.4					
			TLC	8.8					
			TLC	1.4					
			TLC	0.44					
			TLC	0.6					
			39.16						
			69.74						
47+000- 47+100		1	AC	6.6		3	0.8	1	0.8
			AC	0.15					
			AC	0.24					

BALAI PELAKSANAAN JALAN NASIONAL JAWA TIMUR -BALI	PROVINCE : JAWA TIMUR		ROAD NAME : LAMONGAN - GRESIK		PAGE : 10 DARI: 20				
	KOD/KOT/KAB : LAMONGAN				DATE : 25 March 2022				
	DISTRICT : LAMONGAN		DIRECTION TO BABAT →		SURVEYOR : TRIO DIMAS				
STA	PAVEMENT SURFACE						TIPE :	FLEXIBLE	
	POTHOLE	PATCHING	CRACKING	RUTTING		DEPRESSION			
	LARGE	LARGE		WIDE	LARGE	LARGE	WITHIN	PANJANG	LARGE
(m <sup>2</sup> )	(m <sup>2</sup> )	TIPE	(mm)	(m <sup>2</sup> )	(m <sup>2</sup> )	(mm)	(m)	(m <sup>2</sup> )	
47+000- 47+100			AC	0.42					
			TLC	0.36					
			TLC	1.98					
			TLC	0.825					
			TLC	0.8					
47+100- 47+200	0.002	19.32	AC	0.98				100	3
	0.002		AC	4.06					
	0.036		AC	3					
	0.004		AC	5.39					
			AC	21.95					
			AC	1.32					
			AC	1.12					
			TLC	300					

BALAI PELAKSANAAN JALAN NASIONAL JAWA TIMUR -BALI		PROVINCE : JAWA TIMUR			STREET NAME: LAMONGAN - GRESIK			PAGE: 11 FROM: 20	
		KOD/KOT/KAB : LAMONGAN						DATE: 25 March 2022	
		DISTRICT : LAMONGAN			DIRECTION TO GRESIK→			SURVEYOR : TRIO DIMAS	
STA	PAVEMENT SURFACE						TIPE :	FLEXIBLE	
	POTHOLE	PATCHING	CRACK TYPE	CRACK		RUTTING		DEPRESSION	
	LARGE (m <sup>2</sup> )	LARGE (m <sup>2</sup> )		WIDE (mm)	LARGE (m <sup>2</sup> )	LARGE (m <sup>2</sup> )	TIPE (mm)	LONG (m)	LARGE (m <sup>2</sup> )
45+200- 45+300	0.0184	2.42	AC	4		0.0064	1	2.35	0.1034
	0.0168	16.8	AC	34.5		0.0008	1	4.6	0.1035
	0.003					0.0014	1		
	0.004					0.0015	1		
	0.0034								
	0.0009								
	0.003								
	0.02								
	0.0088								
	0.018								
45+300- 45+400	0.0158	1.05	AC	3		0.0006	1		
	0.0157	7.28	AC	1.28		0.0006	1		
	0.0146		LTC	0.24		0.0018	1		
	0.005		LTC	0.56					
	0.027		RS	1.55					

BALAI PELAKSANAAN JALAN NASIONAL JAWA TIMUR -BALI	PROVINCE : JAWA TIMUR		STREET NAME: LAMONGAN - GRESIK		PAGE: 12 FROM: 20				
	KOD/KOT/KAB : LAMONGAN				DATE: 25 March 2022				
	DISTRICT : LAMONGAN		DIRECTION TO GRESIK→		SURVEYOR : TRIO DIMAS				
STA	PAVEMENT SURFACE						TIPE :	FLEXIBLE	
	POTHOLE	PATCHING	CRACK			RUTTING		DEPRESSION	
	LARGE	LARGE	TYPE	WIDE	LARGE	LARGE	TYPE	LONG	LARGE
	(m <sup>2</sup> )	(m <sup>2</sup> )		(mm)	(m <sup>2</sup> )	(m <sup>2</sup> )	(mm)	(m)	(m <sup>2</sup> )
45+400- 45+500	0.0432	7.15	AC	1.2675				2.45	0.1348
	0.0033	13.513	AC	4.6					
	0.0034	25.2	AC	26.533					
	0.0018	9.315	AC	18.8					
	0.0073		AC	3.24					
	0.0116								
	0.0038								
	0.0255								
	0.0089								
	0.012								
45+500 – 45+ 600	0.0144	1.2	AC	1.85		0.007	1		
	0.0163	1.7	AC	4.05		0.0039	1		
	0.0044	1.25	AC	15.54					
	0.0102		AC	2.16					
	0.0162		AC	0.225					

BALAI PELAKSANAAN JALAN NASIONAL JAWA TIMUR -BALI	PROVINCE : JAWA TIMUR		STREET NAME: LAMONGAN - GRESIK		PAGE: 13 FROM: 20				
	KOD/KOT/KAB : LAMONGAN				DATE: 25 March 2022				
	DISTRICT : LAMONGAN		DIRECTION TO GRESIK→		SURVEYOR : TRIO DIMAS				
STA	PAVEMENT SURFACE					TIPE :	FLEXIBLE		
	POTHOLE	PATCHING	CRACK			RUTTING		DEPRESSION	
	LARGE	LARGE	TYPE	WIDE	LARGE	LARGE	TYPE	LONG	LARGE
	(m <sup>2</sup> )	(m <sup>2</sup> )		(mm)	(m <sup>2</sup> )	(m <sup>2</sup> )	(mm)	(m)	(m <sup>2</sup> )
45+600- 45+700	0.0063	20.16	AC	21		0.0036	1		
	0.0126	11.2	AC	4.4		0.0009	1		
	0.012		AC	8.6		0.0036	1		
	0.0135		JRC	2.14					
45+700- 45+800	0.0022	17.6		5.98		4.5	15		
	0.1361			1.44					
	0.0044			22.5					
	0.0088			5					
	0.0064								
	0.0068								
	0.0046								
	0.033								
0.0302									

BALAI PELAKSANAAN JALAN NASIONAL JAWA TIMUR -BALI	PROVINCE : JAWA TIMUR		STREET NAME: LAMONGAN - GRESIK				PAGE: 14 FROM: 20		
	CITY//REG : LAMONGAN						DATE: 25 March 2022		
	DISTRICT : LAMONGAN		DIRECTION TO GRESIK→				SURVEYOR : TRIO DIMAS		
STA	PAVEMENT SURFACE						TIPE :	FLEXIBLE	
	POTHOLE	PATCHING	CRACK	RUTTING		DEPRESSION			
	LARGE	LARGE		WIDE	LARGE	LARGE	TYPE	LONG	LARGE
(m <sup>2</sup> )	(m <sup>2</sup> )	TYPE	(mm)	(m <sup>2</sup> )	(m <sup>2</sup> )	(mm)	(m)	(m <sup>2</sup> )	
45+800- 45+900	0.0008		AC	2.115		0.0001	1	2.4	0.0384
	0.045		AC	0.32		0.0007	18		
	0.12		AC	0.585		0.0024	1		
	0.062		AC	0.63		0.0003	1		
	0.0023		AC	1.8		0.0012	1		
	0.0375		AC	0.125					
45+900- 46+000		0.96	AC	6.615		1.764	14		
			AC	0.7		0.0002	1		
			AC	0.6		0.0002	1		
			AC	0.67		0.0008	1		
			AC	0.35					
			AC	0.42					
		TLC	0.405						

BALAI PELAKSANAAN JALAN NASIONAL JAWA TIMUR -BALI	PROVINCE : JAWA TIMUR		STREET NAME: LAMONGAN - GRESIK				PAGE: 15 FROM: 20		
	KOD/KOT/KAB : LAMONGAN						DATE: 25 March 2022		
	DISTRICT : LAMONGAN		DIRECTION TO GRESIK→				SURVEYOR : TRIO DIMAS		
STA	PAVEMENT SURFACE						TIPE :	FLEXIBLE	
	POTHOLE	PATCHING	CRACK			RUTTING		DEPRESSION	
	LARGE	LARGE	TYPE	WIDE	LARGE	LARGE	TYPE	LONG	LARGE
(m <sup>2</sup> )	(m <sup>2</sup> )	(mm)		(m <sup>2</sup> )	(m <sup>2</sup> )	(mm)	(m)	(m <sup>2</sup> )	
46+000- 46+100	0.0338	1.08	AC	73.8		0.72	2		
	0.0251	2.1	AC	41.4		3.72	2		
	0.0149		AC	1.775		0.0187	2		
	0.048		AC	1.2		0.012	1		
			AC	1.65					
46+100 – 46+ 200	0.09	40.5	AC	12.6		1.02	2	4.9	0.0147
	0.0216	28.8	AC	1.2					
	0.0288	14.5	AC	0.6					
	0.0656	28.5	AC	9.88					
46+200 – 46+ 300	0.0104	3.96	AC	6.555		3.72	12		
	0.0016	3.5	AC	8.74		0.0006	1		
	0.007	2.38	AC	28.56		0.001	1		
	0.0096	21.75	AC	23		0.0013	1		
		12	EC	0.126		0.0018	1		
		EC	0.4625						

BALAI PELAKSANAAN JALAN NASIONAL JAWA TIMUR -BALI	PROVINCE : JAWA TIMUR		STREET NAME: LAMONGAN - GRESIK		PAGE: 16 FROM: 20				
	KOD/KOT/KAB : LAMONGAN				DATE: 25 March 2022				
	DISTRICT : LAMONGAN		DIRECTION TO GRESIK→		SURVEYOR : TRIO DIMAS				
STA	PAVEMENT SURFACE					TIPE :	FLEXIBLE		
	POTHOLE	PATCHING	CRACK		RUTTING		DEPRESSION		
	LARGE	LARGE	TYPE	WIDE	LARGE	LARGE	TYPE	LONG	LARGE
	(m <sup>2</sup> )	(m <sup>2</sup> )		(mm)	(m <sup>2</sup> )	(m <sup>2</sup> )	(mm)	(m)	(m <sup>2</sup> )
	0.0069	48	AC	0.8		3.1	1		
	0.0039		AC	27.9		0.001	1		
46+300-	0.011		AC	1.75					
46+400	0.012		AC	20					
			AC	6.36					
			TLC	0.525					
			TLC	0.24					
			TLC	0.3					
			TLC	0.24					
46+400 –	0.01	5.6		12		3.6			
46+ 500	0.002	6.525		26.22		0.0014	13		
	0.008	20		2		0.0009	1		
	0.0165	1.54		5.655		0.0004	1		
						0.0005	1		



BALAI PELAKSANAAN JALAN NASIONAL JAWA TIMUR -BALI	PROVINCE : JAWA TIMUR		STREET NAME: LAMONGAN - GRESIK				PAGE :17 FROM: 20		
	KOD/KOT/KAB : LAMONGAN						DATE: 25 March 2022		
	DISTRICT : LAMONGAN		DIRECTION TO GRESIK→				SURVEYOR : TRIO DIMAS		
STA	PAVEMENT SURFACE						TIPE :	FLEXIBLE	
	POTHOLE	PATCHING	CRACK			RUTTING		DEPRESSION	
	LARGE	LARGE	TYPE	WIDE	LARGE	LARGE	TYPE	LONG	LARGE
	(m <sup>2</sup> )	(m <sup>2</sup> )		(mm)	(m <sup>2</sup> )	(m <sup>2</sup> )	(mm)	(m)	(m <sup>2</sup> )
46+500- 46+600		10.89	AC	12.3		4.5	15		
			AC	12.2					
			AC	25.5					
			AC	15					
			TLC	0.8					
			TLC	0.63					
			TLC	0.18					
46+600 – 46+ 700	0.012	5.7	AC	6.57		0.648	12		
	0.003	33.6	AC	1.2		0.002	1		
	0.013	52.2	AC	0.48		0.009	1		
	0.029		AC	14.2		0.003	1		
	0.013								
	0.004								
	0.066								
	0.038								

BALAI PELAKSANAAN JALAN NASIONAL JAWA TIMUR -BALI	PROVINCE : JAWA TIMUR		STREET NAME: LAMONGAN - GRESIK		PAGE: 18 FROM: 20				
	KOD/KOT/KAB : LAMONGAN				DATE: 25 March 2022				
	DISTRICT : LAMONGAN		DIRECTION TO GRESIK→		SURVEYOR : TRIO DIMAS				
STA	PAVEMENT SURFACE						TIPE :	FLEXIBLE	
	POTHOLE	PATCHING	CRACK	RUTTING		DEPRESSION			
	LARGE	LARGE		WIDE	LARGE	LARGE	TYPE	LONG	LARGE
(m <sup>2</sup> )	(m <sup>2</sup> )	TYPE	(mm)	(m <sup>2</sup> )	(m <sup>2</sup> )	(mm)	(m)	(m <sup>2</sup> )	
46+600 – 46+ 700	0.029	4.64	AC	16		0.055	1	1.3	0.009
	0.004	3.92	AC	9.45		1.08	1	0.7	0.035
46+700- 46+800	0.02		AC	38.19		1.627	12	0.7	0.003
	0.008		AC	1				0.7	0.006
	0.021		AC	0.39					
			AC	0.9					
			TLC	0.44					
			TLC	0.8					
			TLC	0.6					
46+800- 46+900	0.168	18.7	AC	4.64		0.415	1	0.4	0.003
	0.002	0.75	AC	8.96		0.043	1	0.4	0.007
	0.03	11.44	AC	26.01		0.002	1	3.5	0.02
	0.003		AC	0.96		0.001	1		
	0.012		AC	43.05		0.003	1		

BALAI PELAKSANAAN JALAN NASIONAL JAWA TIMUR -BALI	PROVINCE : JAWA TIMUR		STREET NAME: LAMONGAN - GRESIK				PAGE: 19 FROM: 20		
	KOD/KOT/KAB : LAMONGAN						DATE: 25 March 2022		
	DISTRICT : LAMONGAN		DIRECTION TO GRESIK→				SURVEYOR : TRIO DIMAS		
STA	PAVEMENT SURFACE						TIPE :	FLEXIBLE	
	POTHOLE	PATCHING	CRACK			RUTTING		DEPRESSION	
	LARGE	LARGE	TYPE	WIDE	LARGE	LARGE	TYPE	LONG	LARGE
	(m <sup>2</sup> )	(m <sup>2</sup> )		(mm)	(m <sup>2</sup> )	(m <sup>2</sup> )	(mm)	(m)	(m <sup>2</sup> )
46+900- 47+000			AC	2.1		0.006	1		
	0.002		AC	3.38		3.6	12		
	0.006		AC	4.2		0.002	1		
	0.004		AC	16.2		0.005	1		
	0.01		AC	22.8		0.007	1		
	0.804		AC	3					
	0.003		AC	11.28					
			AC	8.4					
			TLC	1.59					
		TLC	0.625						
47+000- 47+100	0.003		AC	14.25		3.6	12		
	1E-03		AC	15.66					
	0.002		AC	0.35					
			AC	1.2					
			AC	15					

BALAI PELAKSANAAN JALAN NASIONAL JAWA TIMUR -BALI		PROVINCE : JAWA TIMUR		STREET NAME: LAMONGAN - GRESIK			PAGE:20 FROM: 20		
		KOD/KOT/KAB : LAMONGAN				DATE: 25 March 2022			
		DISTRICT : LAMONGAN		DIRECTION TO GRESIK→			SURVEYOR : TRIO DIMAS		
STA	PAVEMENT SURFACE						TIPE :	FLEXIBLE	
	POTHOLE	PATCHING	CRACK			RUTTING		DEPRESSION	
	LARGE	LARGE	TYPE	WIDE	LARGE	LARGE	TYPE	LONG	LARGE
	(m <sup>2</sup> )	(m <sup>2</sup> )		(mm)	(m <sup>2</sup> )	(m <sup>2</sup> )	(mm)	(m)	(m <sup>2</sup> )
47+000- 47+100			AC	14.28					
			AC	23.75					
			EC	0.28					
			TLC	0.44					
			TLC	0.63					
47+100- 47+200	0.002	11.4	AC	60		4.5	15		
		16.5	AC	5.44					
			AC	21					
			EC	0.36					
			TLC	0.8					
			TLC	0.56					
			TLC	0.613					

## APPENDIX II

### Photo Documentation

#### 1. Aligator Craking

Gresik-Lamongan Road STA 45+700-45+800



#### 2. Longitudinal dan Tranversal Cracking

Gresik-Lamongan Road STA 45+800-45+900



**3. Weathering/Raveling**

Gresik - Lamongan Road STA 46+700-46+800



**4. Photoles**

Gresik - Lamongan Road STA 45+400-45+500



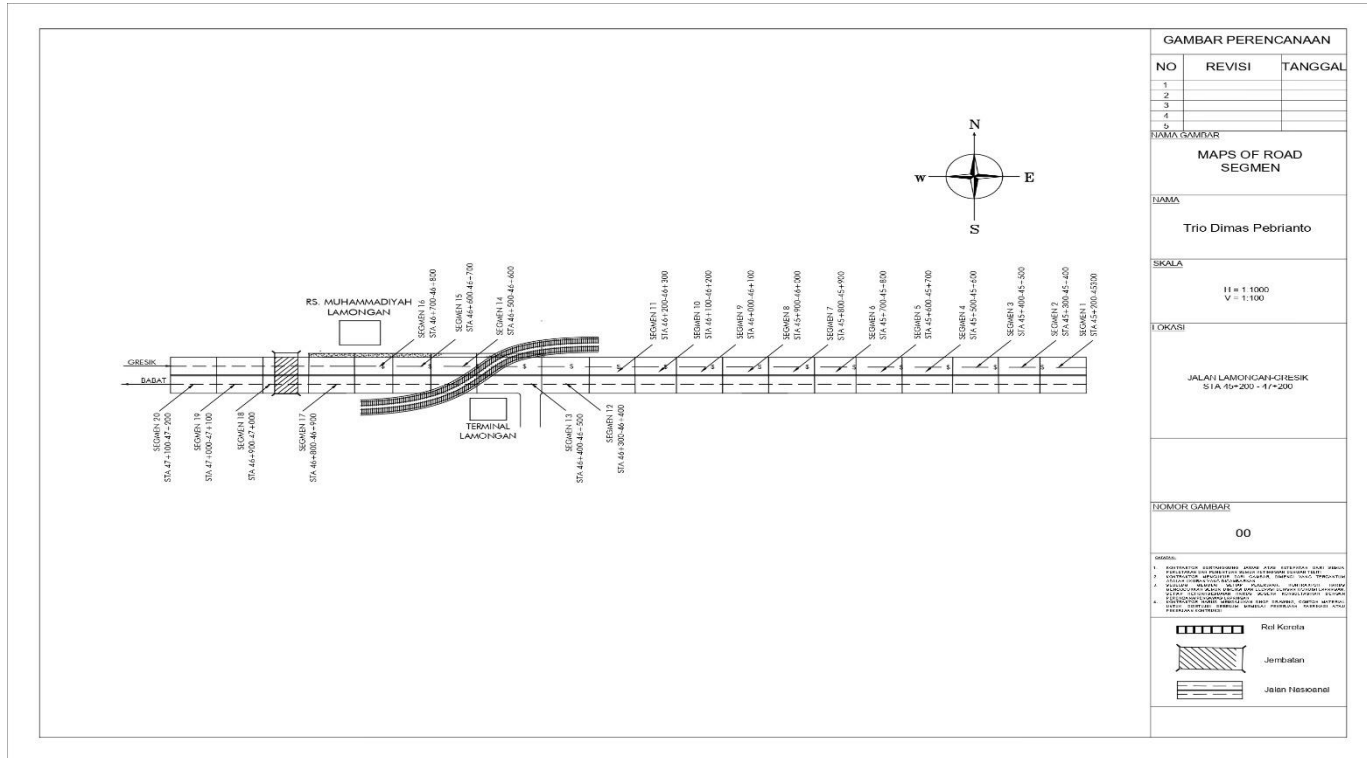
**5. Stationing Lamongan-Gresik Road STA 45+200-47+200**



**6. Survey Gresik-Lamongan Road STA 45+200-47+200**



# APPENDIX III



GAMBAR PERENCANAAN		
NO	REVISI	TANGGAL
1		
2		
3		
4		
5		

NAMA GAMBAR

**MAPS OF ROAD SEGMENT**

NAMA

**Trio Dimas Pebrianto**

SKALA

H = 1:1000  
V = 1:100

LOKASI

JALAN LAMONGAN-GRESIK  
STA. 40+200 - 44+200

NO. GAMBAR

**00**

REVISI

1. PERENCANAAN ALTERNATIF
2. PERENCANAAN ALTERNATIF
3. PERENCANAAN ALTERNATIF
4. PERENCANAAN ALTERNATIF
5. PERENCANAAN ALTERNATIF

Rid Korota  
 Jembatan  
 Jalan Hisskonel

Maps of Road Segment  
(Source: Personal Document,2022)

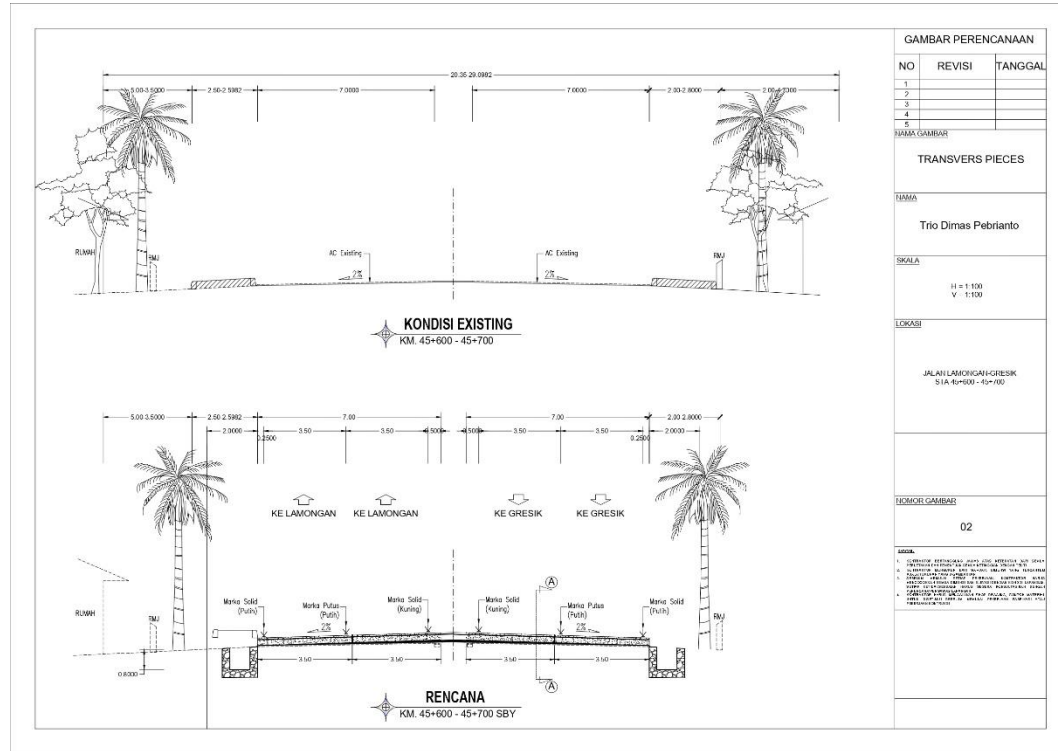




# APPENDIX V

## Transverse Pieces

Transverse pieces from Lamongan-Gresik National Road. STA 45+200 – 47+200



Tranversal Piece  
(Source: Data Personal,2022)