

LAMPIRAN 1**TABULASI DATA**

No. Sampel	PAD	DP	SP	BM	LN_PAD	LN_DP	LN_SP	LN_BM
1	2.791.580.050.710	1.460.891.497.629	977.089.154.745	1.281.394.616.149	28,66	28,01	27,61	27,88
2	3.307.323.863.978	1.488.374.891.545	1.311.544.540.067	1.404.386.425.421	28,83	28,03	27,90	27,97
3	4.035.649.478.397	1.384.772.424.683	1.414.929.806.904	1.785.125.255.500	29,03	27,96	27,98	28,21
4	4.090.206.769.387	1.941.019.526.654	1.069.035.716.701	1.789.394.044.827	29,04	28,29	27,70	28,21
5	44.853.946.415	446.587.901.437	115.011.695.680	155.842.580.700	24,53	26,82	25,47	25,77
6	62.807.445.882	501.994.753.265	185.488.305.701	136.626.885.534	24,86	26,94	25,95	25,64
7	104.233.584.925	503.746.629.211	91.492.226.068	281.882.302.047	25,37	26,95	25,24	26,36
8	109.533.498.034	624.840.719.033	72.255.722.990	174.368.708.327	25,42	27,16	25,00	25,88
9	72.853.545.668	434.688.185.289	62.958.324.232	187.175.438.263	25,01	26,80	24,87	25,96
10	102.757.907.576	469.115.316.257	107.174.829.064	126.326.327.563	25,36	26,87	25,40	25,56
11	121.264.917.468	483.344.695.393	95.456.361.952	168.336.826.221	25,52	26,90	25,28	25,85
12	131.920.190.721	622.676.097.741	62.482.372.794	203.371.880.396	25,61	27,16	24,86	26,04
13	74.944.029.536	419.827.536.000	119.078.629.727	67.646.320.364	25,04	26,76	25,50	24,94
14	105.277.492.018	438.838.612.641	166.994.046.690	141.591.947.931	25,38	26,81	25,84	25,68
15	129.258.132.763	457.456.088.791	172.373.021.674	135.968.848.096	25,59	26,85	25,87	25,64
16	152.462.202.065	555.962.488.047	35.955.571.409	303.777.099.331	25,75	27,04	24,31	26,44
17	96.011.481.200	556.621.076.555	169.479.267.427	180.111.320.995	25,29	27,05	25,86	25,92
18	134.584.344.293	605.215.256.742	254.529.474.293	201.533.941.749	25,63	27,13	26,26	26,03
19	164.681.136.058	597.215.788.294	339.135.179.353	182.413.227.390	25,83	27,12	26,55	25,93
20	173.235.929.828	717.561.434.206	305.857.486.594	246.394.704.721	25,88	27,30	26,45	26,23
21	317.772.985.191	863.736.860.985	182.754.567.308	353.264.833.758	26,48	27,48	25,93	26,59
22	372.545.396.292	956.695.776.132	522.985.750.378	318.462.052.422	26,64	27,59	26,98	26,49
23	424.938.755.525	926.364.574.783	316.838.899.177	337.647.558.967	26,78	27,55	26,48	26,55
24	477.541.556.465	1.069.366.446.979	305.005.705.627	193.667.164.391	26,89	27,70	26,44	25,99
25	80.268.572.728	891.828.188.534	115.335.621.389	276.400.497.380	25,11	27,52	25,47	26,35
26	92.722.219.766	995.527.404.699	87.824.405.062	295.942.834.080	25,25	27,63	25,20	26,41
27	175.624.054.291	1.184.662.822.511	197.494.091.004	480.529.384.071	25,89	27,80	26,01	26,90
28	200.073.202.554	1.354.664.114.508	59.467.999.707	412.823.435.617	26,02	27,93	24,81	26,75

LAMPIRAN 1**TABULASI DATA**

29	183.235.877.422	1.313.865.318.226	227.680.687.694	404.860.203.010	25,93	27,90	26,15	26,73
30	283.488.703.181	1.387.611.468.719	334.447.460.075	558.546.677.148	26,37	27,96	26,54	27,05
31	346.991.331.407	1.494.315.803.224	371.845.933.542	699.415.745.319	26,57	28,03	26,64	27,27
32	367.872.665.894	1.847.137.392.967	82.106.355.528	911.584.332.145	26,63	28,24	25,13	27,54
33	115.670.863.817	1.088.237.985.072	108.573.761.555	330.813.083.801	25,47	27,72	25,41	26,52
34	188.827.430.091	1.161.109.878.332	225.163.176.125	385.260.453.752	25,96	27,78	26,14	26,68
35	216.648.256.570	1.242.813.217.360	284.512.581.430	508.331.950.780	26,10	27,85	26,37	26,95
36	224.108.765.169	1.599.003.618.436	137.609.170.014	692.718.770.257	26,14	28,10	25,65	27,26
37	215.766.157.632	1.475.724.380.378	353.881.639.921	315.627.292.681	26,10	28,02	26,59	26,48
38	291.244.903.352	1.761.753.712.013	370.132.818.020	537.686.801.888	26,40	28,20	26,64	27,01
39	337.695.825.017	1.958.214.470.034	333.422.039.568	594.229.176.810	26,55	28,30	26,53	27,11
40	340.407.679.609	1.994.205.631.703	79.051.687.856	967.917.005.412	26,55	28,32	25,09	27,60
41	79.559.722.884	897.073.140.840	96.625.663.448	251.144.647.576	25,10	27,52	25,29	26,25
42	134.684.701.402	979.336.957.137	159.600.894.512	311.495.490.129	25,63	27,61	25,80	26,46
43	158.974.210.144	1.051.590.156.581	180.318.790.590	404.576.533.409	25,79	27,68	25,92	26,73
44	177.025.949.242	1.297.761.524.802	121.355.720.296	425.425.089.820	25,90	27,89	25,52	26,78
45	502.767.029.904	996.197.113.935	179.232.839.512	417.766.098.409	26,94	27,63	25,91	26,76
46	700.587.792.877	1.065.300.023.150	210.456.476.226	523.804.897.182	27,28	27,69	26,07	26,98
47	799.884.870.103	1.103.936.339.654	117.439.504.844	584.223.675.905	27,41	27,73	25,49	27,09
48	715.480.939.191	1.336.689.003.743	67.862.494.626	413.339.658.373	27,30	27,92	24,94	26,75
49	308.376.681.785	1.588.896.753.256	303.886.236.252	478.577.397.312	26,45	28,09	26,44	26,89
50	440.462.012.491	1.746.847.365.217	404.694.376.001	537.521.256.032	26,81	28,19	26,73	27,01
51	461.882.363.147	1.917.759.331.546	437.466.356.061	556.408.885.143	26,86	28,28	26,80	27,04
52	524.137.897.016	2.279.360.485.155	649.555.523.036	460.451.300.847	26,99	28,45	27,20	26,86
53	185.091.678.239	1.060.053.279.863	235.468.644.157	216.972.911.919	25,94	27,69	26,18	26,10
54	304.065.301.093	1.131.290.917.695	355.195.113.339	355.049.118.263	26,44	27,75	26,60	26,60
55	363.963.252.972	1.170.782.676.685	336.445.575.812	403.219.792.974	26,62	27,79	26,54	26,72
56	374.141.185.825	1.479.480.105.860	228.373.317.014	364.901.756.772	26,65	28,02	26,15	26,62
57	295.295.340.021	1.216.746.375.039	413.030.795.206	292.282.260.615	26,41	27,83	26,75	26,40
58	203.212.446.367	1.291.562.487.696	638.545.317.370	325.197.091.568	26,04	27,89	27,18	26,51
59	314.229.578.679	1.345.374.425.457	510.816.430.976	457.787.623.448	26,47	27,93	26,96	26,85

LAMPIRAN 1**TABULASI DATA**

60	339.113.897.822	1.647.816.793.647	473.605.797.114	612.052.137.541	26,55	28,13	26,88	27,14
61	161.087.936.085	1.139.467.107.964	125.199.484.089	240.071.772.482	25,81	27,76	25,55	26,20
62	272.409.285.216	1.209.760.803.838	165.213.664.219	353.435.615.278	26,33	27,82	25,83	26,59
63	321.667.133.176	1.313.958.388.093	189.685.381.615	459.305.792.650	26,50	27,90	25,97	26,85
64	403.474.462.147	1.708.680.363.941	70.312.355.480	616.499.721.973	26,72	28,17	24,98	27,15
65	112.406.824.133	933.471.353.007	226.719.647.476	163.055.838.729	25,45	27,56	26,15	25,82
66	194.076.104.164	1.015.127.007.111	297.164.413.531	236.756.736.151	25,99	27,65	26,42	26,19
67	212.585.093.436	1.067.949.312.205	312.815.223.634	242.225.159.241	26,08	27,70	26,47	26,21
68	242.111.541.252	1.286.208.545.624	184.327.805.233	347.685.601.308	26,21	27,88	25,94	26,57
69	262.267.260.455	1.700.485.365.220	194.616.782.168	436.501.502.528	26,29	28,16	25,99	26,80
70	411.185.107.107	1.831.998.927.025	390.957.110.051	501.503.673.434	26,74	28,24	26,69	26,94
71	461.887.704.825	2.989.398.742.886	352.093.880.268	714.192.895.223	26,86	28,73	26,59	27,29
72	502.754.981.975	2.911.560.828.774	217.444.522.923	683.932.346.302	26,94	28,70	26,11	27,25
73	87.859.707.891	867.309.906.662	136.670.642.799	131.065.762.797	25,20	27,49	25,64	25,60
74	141.162.943.324	953.331.478.618	223.224.008.481	190.932.555.694	25,67	27,58	26,13	25,98
75	164.564.899.426	994.762.395.252	166.991.262.351	239.647.205.207	25,83	27,63	25,84	26,20
76	165.617.751.404	1.240.909.563.966	46.948.204.448	286.943.948.471	25,83	27,85	24,57	26,38
77	219.013.234.739	950.827.549.420	252.721.646.206	230.226.503.155	26,11	27,58	26,26	26,16
78	357.924.994.262	1.028.168.843.301	420.791.894.639	365.470.000.620	26,60	27,66	26,77	26,62
79	414.965.865.274	1.079.256.466.351	381.068.191.211	491.829.693.652	26,75	27,71	26,67	26,92
80	447.620.851.329	1.315.350.439.444	290.474.586.863	442.333.406.190	26,83	27,91	26,39	26,82
81	110.692.028.182	1.072.429.653.231	228.387.891.120	239.382.605.915	25,43	27,70	26,15	26,20
82	175.489.410.222	1.132.151.189.738	316.162.581.017	277.520.061.870	25,89	27,76	26,48	26,35
83	287.881.055.210	1.166.956.491.647	343.338.702.213	361.295.978.864	26,39	27,79	26,56	26,61
84	323.045.177.742	1.438.057.806.688	234.330.686.925	447.729.508.596	26,50	27,99	26,18	26,83
85	85.636.138.392	1.039.217.660.505	157.233.392.898	189.236.101.557	25,17	27,67	25,78	25,97
86	169.237.013.272	1.116.680.126.031	247.815.559.318	243.988.354.559	25,85	27,74	26,24	26,22
87	191.166.217.182	1.164.518.440.211	347.308.631.337	313.226.242.409	25,98	27,78	26,57	26,47
88	195.606.461.847	1.468.168.730.397	265.795.780.386	355.374.670.586	26,00	28,02	26,31	26,60
89	62.988.926.126	758.837.409.646	71.734.182.405	132.854.725.599	24,87	27,36	25,00	25,61
90	101.276.945.022	808.252.090.951	129.225.801.703	200.429.181.165	25,34	27,42	25,58	26,02

LAMPIRAN 1

TABULASI DATA

91	126.449.078.417	863.523.504.816	146.414.491.270	268.151.647.436	25,56	27,48	25,71	26,31
92	150.466.067.821	1.087.172.953.668	28.306.481.621	379.166.997.216	25,74	27,71	24,07	26,66
93	89.462.536.536	864.973.186.637	198.862.047.467	146.091.858.518	25,22	27,49	26,02	25,71
94	171.518.204.167	985.006.999.351	335.184.761.362	240.818.085.179	25,87	27,62	26,54	26,21
95	170.258.936.684	1.053.832.740.582	253.232.313.866	447.685.501.909	25,86	27,68	26,26	26,83
96	178.478.890.964	1.300.979.780.444	198.319.059.885	544.165.819.579	25,91	27,89	26,01	27,02
97	278.165.169.902	1.429.989.392.045	262.418.451.362	247.247.832.930	26,35	27,99	26,29	26,23
98	421.442.629.861	1.596.421.782.193	468.662.491.563	326.767.786.480	26,77	28,10	26,87	26,51
99	478.269.057.788	1.790.131.544.962	543.331.118.167	464.634.017.141	26,89	28,21	27,02	26,86
100	480.758.720.671	2.087.984.077.197	180.498.872.363	838.440.054.782	26,90	28,37	25,92	27,45
101	134.097.320.781	1.016.758.344.123	119.148.725.373	110.848.141.316	25,62	27,65	25,50	25,43
102	198.730.421.480	1.099.675.841.581	189.529.114.682	176.983.715.062	26,02	27,73	25,97	25,90
103	210.695.348.135	1.144.291.367.053	171.440.616.059	324.169.328.852	26,07	27,77	25,87	26,50
104	240.111.321.574	1.455.939.797.771	70.616.497.986	376.402.638.867	26,20	28,01	24,98	26,65
105	858.433.678.218	1.311.016.195.099	484.291.240.761	518.682.837.520	27,48	27,90	26,91	26,97
106	1.115.332.938.500	1.402.935.437.170	714.592.863.004	691.163.487.699	27,74	27,97	27,29	27,26
107	1.266.786.627.409	1.388.639.002.033	574.241.435.046	936.192.614.541	27,87	27,96	27,08	27,57
108	1.335.283.958.793	1.690.087.946.119	583.992.202.844	809.997.501.058	27,92	28,16	27,09	27,42
109	78.843.407.932	839.722.211.740	82.557.126.214	264.570.994.896	25,09	27,46	25,14	26,30
110	129.640.577.934	930.133.128.794	128.956.511.628	325.053.037.623	25,59	27,56	25,58	26,51
111	148.507.958.983	973.536.392.479	191.177.365.877	340.683.173.357	25,72	27,60	25,98	26,55
112	173.836.184.925	1.171.851.136.392	110.931.022.607	416.863.544.279	25,88	27,79	25,43	26,76
113	77.799.518.146	855.666.372.480	219.672.423.498	206.760.392.222	25,08	27,48	26,12	26,05
114	232.451.089.332	940.434.481.091	237.500.578.958	280.962.369.851	26,17	27,57	26,19	26,36
115	155.254.334.899	977.071.592.537	233.657.677.225	327.136.709.459	25,77	27,61	26,18	26,51
116	182.174.291.709	1.217.293.670.903	153.545.048.550	362.840.294.381	25,93	27,83	25,76	26,62
117	227.120.525.358	1.013.336.747.881	158.968.722.179	267.152.793.943	26,15	27,64	25,79	26,31
118	291.079.944.393	1.089.336.814.742	250.431.954.314	362.402.236.927	26,40	27,72	26,25	26,62
119	345.965.620.446	1.141.173.339.001	294.018.836.475	386.655.657.749	26,57	27,76	26,41	26,68
120	364.133.296.890	1.443.895.947.283	258.194.470.143	464.180.160.121	26,62	28,00	26,28	26,86
121	174.981.706.538	1.150.452.158.043	181.608.908.283	153.095.137.771	25,89	27,77	25,93	25,75

LAMPIRAN 1

TABULASI DATA

122	276.577.973.500	1.228.749.107.704	283.334.915.703	315.546.166.049	26,35	27,84	26,37	26,48
123	309.646.333.186	1.281.702.685.859	284.807.704.767	444.587.079.517	26,46	27,88	26,38	26,82
124	342.570.756.799	1.726.713.610.875	209.096.842.411	574.341.318.491	26,56	28,18	26,07	27,08

Lampiran 2

Hasil analisis Statistik Dengan SPSS

Regression

Descriptive Statistics

	Mean	Std. Deviation	N
BM	408037819946.59	280897788281.545	124
PAD	381587173254.73	627995251921.762	124
DP	1194638125164.20	447282824227.075	124
SP	272038296467.40	221208138855.731	124

Correlations

		BM	PAD	DP	SP
Pearson Correlation	BM	1.000	.870	.595	.718
	PAD	.870	1.000	.310	.842
	DP	.595	.310	1.000	.349
	SP	.718	.842	.349	1.000
Sig. (1-tailed)	BM	.000	.000	.000	.000
	PAD	.000	.000	.000	.000
	DP	.000	.000	.000	.000
	SP	.000	.000	.000	.000
N	BM	124	124	124	124
	PAD	124	124	124	124
	DP	124	124	124	124
	SP	124	124	124	124

Variables Entered/Removed^b

Mode	Variables Entered	Variables Removed	Method
1	SP, DP, PAD ^a	.	Enter

a. All requested variables entered.

b. Dependent Variable: BM

Model Summary^b

Mode	R	R Square	Adjusted R Square	Std. Error of the Estimate	Durbin-Watson
1	.939 ^a	.882	.879	9.788E10	1.440

a. Predictors: (Constant), SP, DP, PAD

b. Dependent Variable: BM

ANOVA^a

Model		Sum of Squares	df	Mean Square	F	Sig.
1	Regression	8.555E24	3	2.852E24	297.675	.000 ^a
	Residual	1.150E24	120	9.580E21		
	Total	9.705E24	123			

a. Predictors: (Constant), SP, DP, PAD

b. Dependent Variable: BM

Coefficients^a

Model		Unstandardized Coefficients		Standardized Coefficients	t	Sig.
		B	Std. Error	Beta		
1	(Constant)	30729892170.774	2.645E10		1.162	.248
	PAD	.399	.026	.891	15.303	.000
	DP	.236	.021	.375	11.191	.000
	SP	-.208	.075	-.163	-2.767	.007

a. Dependent Variable: BM

Coefficients^a

Model		Collinearity Statistics	
		Tolerance	VIF
1	(Constant)		
	PAD	.291	3.437
	DP	.877	1.140
	SP	.283	3.537

a. Dependent Variable: BM

Collinearity Diagnostics^a

Model	Dimension	Eigenvalue	Condition Index	Variance Proportions			
				(Constant)	PAD	DP	SP
1	1	3.249	1.000	.01	.01	.01	.01
	2	.615	2.298	.04	.18	.03	.01
	3	.077	6.476	.00	.62	.26	.85
	4	.058	7.475	.94	.19	.71	.13

a. Dependent Variable: BM

Residuals Statistics^a

	Minimum	Maximum	Mean	Std. Deviation	N
Predicted Value	1.30E11	1.90E12	4.08E11	2.637E11	124
Std. Predicted Value	-1.054	5.646	.000	1.000	124
Standard Error of Predicted Value	9.083E9	5.745E10	1.556E10	8.220E9	124
Adjusted Predicted Value	1.29E11	1.95E12	4.08E11	2.654E11	124
Residual	-2.162E11	3.477E11	.000	9.668E10	124
Std. Residual	-2.209	3.553	.000	.988	124
Stud. Residual	-2.220	3.676	-.001	1.012	124

a. Dependent Variable: BM

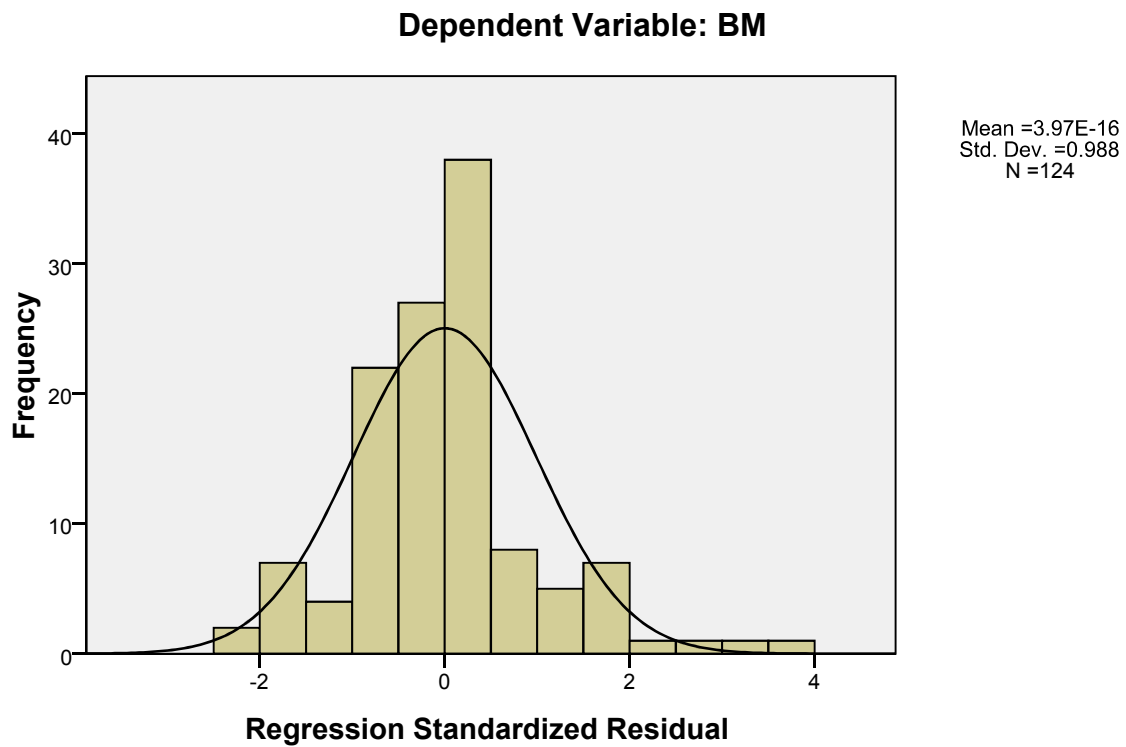
Residuals Statistics^a

	Minimum	Maximum	Mean	Std. Deviation	N
Deleted Residual	-2.229E11	3.722E11	-3.083E8	1.018E11	124
Stud. Deleted Residual	-2.257	3.886	.002	1.030	124
Mahal. Distance	.067	41.375	2.976	5.951	124
Cook's Distance	.000	.243	.014	.044	124
Centered Leverage Value	.001	.336	.024	.048	124

a. Dependent Variable: BM

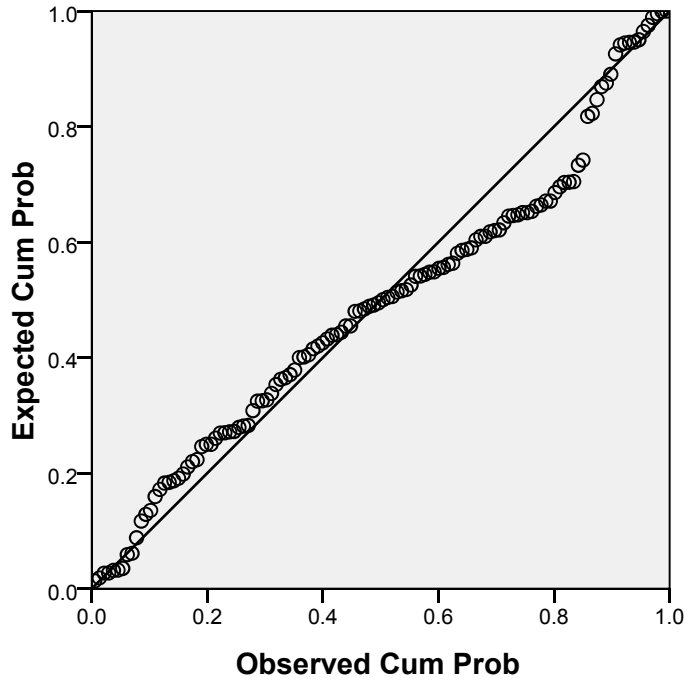
Charts

Histogram



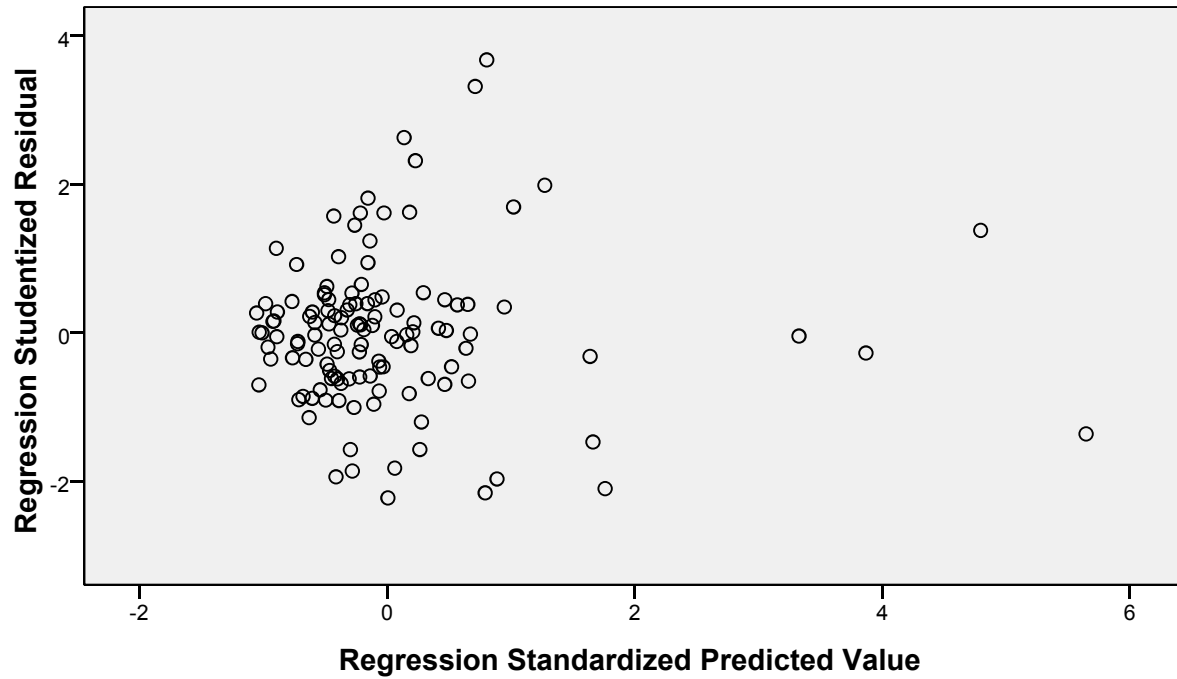
Normal P-P Plot of Regression Standardized Residual

Dependent Variable: BM



Scatterplot

Dependent Variable: BM



Regression

Descriptive Statistics

	Mean	Std. Deviation	N
LN_BM	26.5655	.56702	124
LN_PAD	26.2048	.81544	124
LN_DP	27.7382	.38848	124
LN_SP	26.0846	.70301	124

Correlations

		LN BM	LN PAD	LN DP	LN SP
Pearson Correlation	LN_BM	1.000	.817	.752	.443
	LN_PAD	.817	1.000	.632	.643
	LN_DP	.752	.632	1.000	.411
	LN_SP	.443	.643	.411	1.000
Sig. (1-tailed)	LN_BM	.	.000	.000	.000
	LN_PAD	.000	.	.000	.000

Correlations

		LN BM	LN PAD	LN DP	LN SP
Sig. (1-tailed)	LN_DP	.000	.000	.	.000
	LN_SP	.000	.000	.000	.
N	LN_BM	124	124	124	124
	LN_PAD	124	124	124	124
	LN_DP	124	124	124	124
	LN_SP	124	124	124	124

Variables Entered/Removed^b

Model	Variables Entered	Variables Removed	Method
1	LN_SP, LN_DP, LN_PAD ^a	.	Enter

a. All requested variables entered.

b. Dependent Variable: LN_BM

Model Summary^b

Model	R	R Square	Adjusted R Square	Std. Error of the Estimate	Durbin-Watson
1	.879 ^a	.772	.766	.27419	1.312

a. Predictors: (Constant), LN_SP, LN_DP, LN_PAD

b. Dependent Variable: LN_BM

ANOVA^b

Model		Sum of Squares	df	Mean Square	F	Sig.
1	Regression	30.524	3	10.175	135.340	.000 ^a
	Residual	9.022	120	.075		
	Total	39.546	123			

a. Predictors: (Constant), LN_SP, LN_DP, LN_PAD

b. Dependent Variable: LN_BM

Coefficients^a

Model		Unstandardized Coefficients		Standardized Coefficients	t	Sig.	Collinearity Statistics	
		B	Std. Error	Beta			Tolerance	VIF
1	(Constant)	1.618	1.886		.858	.393		
	LN_PAD	.459	.047	.660	9.856	.000	.424	2.360
	LN_DP	.574	.082	.393	6.989	.000	.600	1.666
	LN_SP	-.115	.046	-.143	-2.510	.013	.587	1.704

a. Dependent Variable: LN_BM

Collinearity Diagnostics

Model	Dimension	Eigenvalue	Condition Index	Variance Proportions			
				(Constant)	LN PAD	LN DP	LN SP
1	1	3.999	1.000	.00	.00	.00	.00
	2	.001	85.321	.12	.29	.02	.08
	3	.000	114.496	.00	.40	.02	.88
	4	7.061E-5	237.981	.88	.31	.95	.03

a. Dependent Variable: LN_BM

Residuals Statistics^a

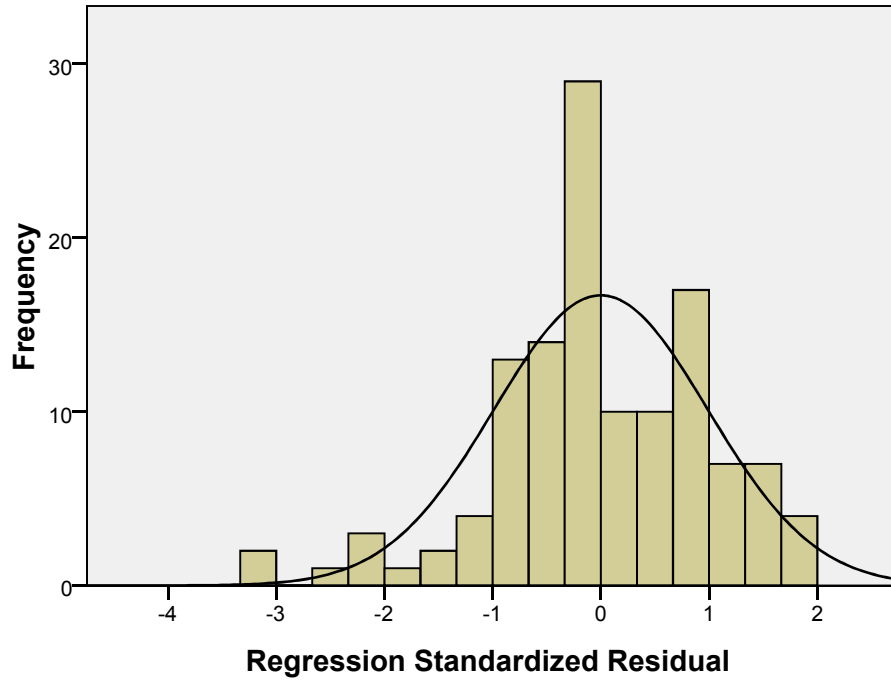
	Minimum	Maximum	Mean	Std. Deviation	N
Predicted Value	25.3419	28.0002	26.5655	.49816	124
Std. Predicted Value	-2.456	2.880	.000	1.000	124
Standard Error of Predicted Value	.026	.104	.046	.018	124
Adjusted Predicted Value	25.3143	27.9727	26.5644	.49675	124
Residual	-.88148	.54026	.00000	.27082	124
Std. Residual	-3.215	1.970	.000	.988	124
Stud. Residual	-3.239	2.018	.002	1.005	124
Deleted Residual	-.89468	.56680	.00114	.28049	124
Stud. Deleted Residual	-3.376	2.045	.000	1.017	124
Mahal. Distance	.077	16.772	2.976	3.271	124
Cook's Distance	.000	.143	.009	.021	124
Centered Leverage Value	.001	.136	.024	.027	124

a. Dependent Variable: LN_BM

Charts

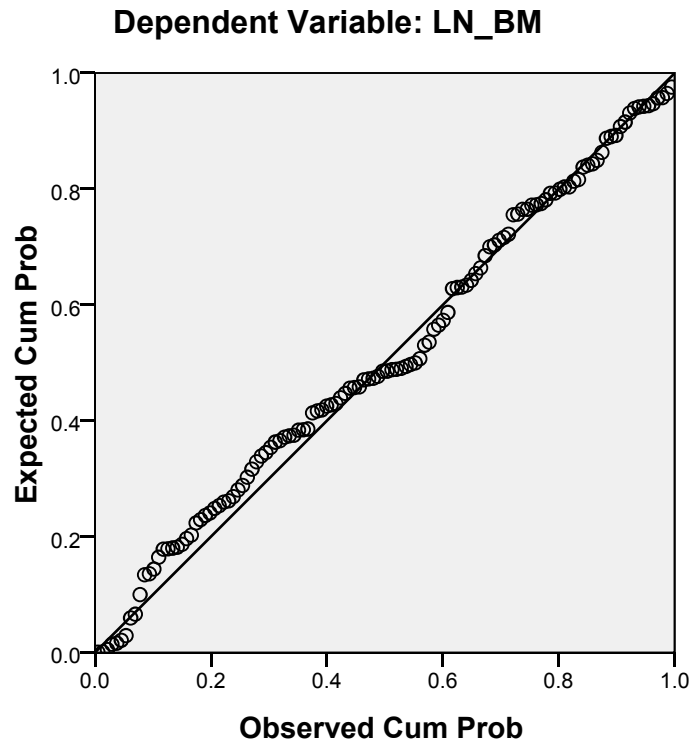
Histogram

Dependent Variable: LN_BM



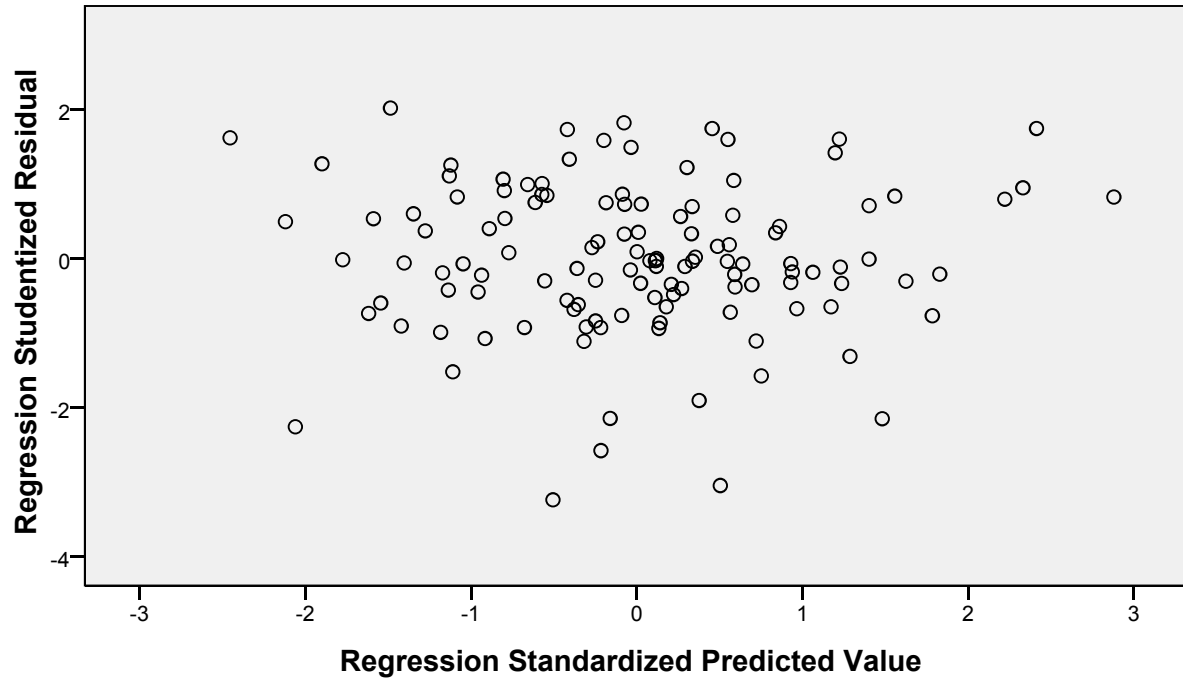
Mean =3.16E-14
Std. Dev. =0.988
N =124

Normal P-P Plot of Regression Standardized Residual



Scatterplot

Dependent Variable: LN_BM



NPar Tests

One-Sample Kolmogorov-Smirnov Test

		Unstandardized Residual
N		124
Normal Parameters a	Mean	.0000397
	Std. Deviation	9.6678324E10
Most Extreme Differences	Absolute	.132
	Positive	.132
	Negative	-.059
Kolmogorov-Smirnov Z		1.466
Asymp. Sig. (2-tailed)		.027

a. Test distribution is Normal.

NPar Tests

One-Sample Kolmogorov-Smirnov Test

		Unstandardized Residual
N		124
Normal Parameters a	Mean	.0000000
	Std. Deviation	.27082415
Most Extreme Differences	Absolute	.063
	Positive	.057
	Negative	-.063
Kolmogorov-Smirnov Z		.697
Asymp. Sig. (2-tailed)		.716

a. Test distribution is Normal.