

LAMPIRAN



Pemotongan Spesimen



Spesimen uji



NaCl 150 gr



NaCl 250 gr



NaCl 350 gr



Proses Pembuatan Larutan NaCl



Contoh Sampel Penimbangan

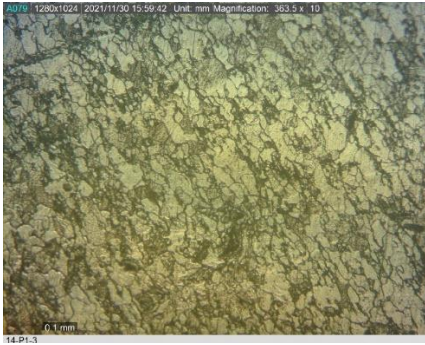


Contoh Sampel Penimbangan

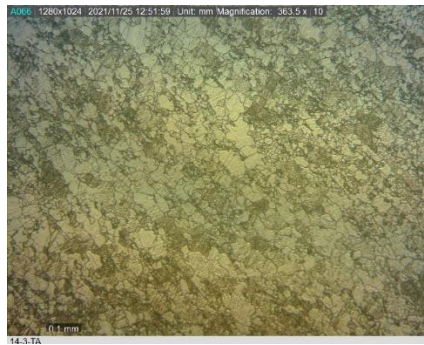


Hasil Spesimen Setelah percobaan

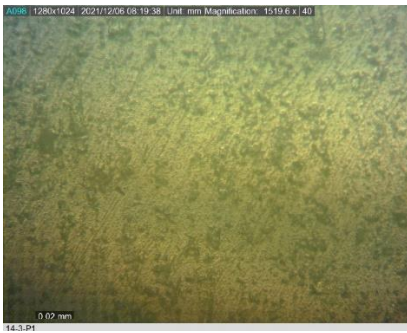
Struktur mikro larutan NaCl 3% dengan Anoda



Struktur mikro larutan NaCl 3% tanpa Anoda



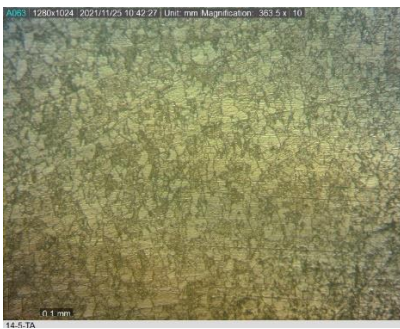
Struktur mikro larutan NaCl 3% Anoda



Struktur mikro larutan NaCl 5% dengan Anoda



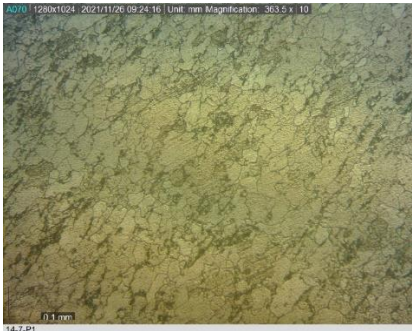
Struktur mikro larutan NaCl 5% tanpa Anoda



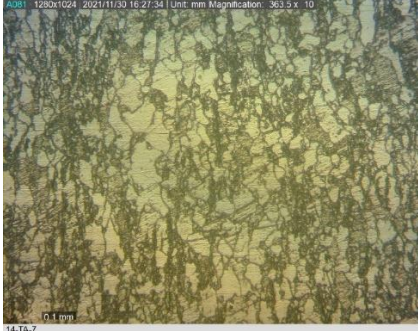
Struktur mikro larutan NaCl 5% Anoda



Struktur mikro larutan NaCl 7% dengan Anoda



Struktur mikro larutan NaCl 7% tanpa Anoda



Struktur mikro larutan NaCl 7% Anoda

