

LAMPIRAN



a. Proses Pengecoran metode *Gravity Casting*



b. Furnace pada proses perlakuan panas T6

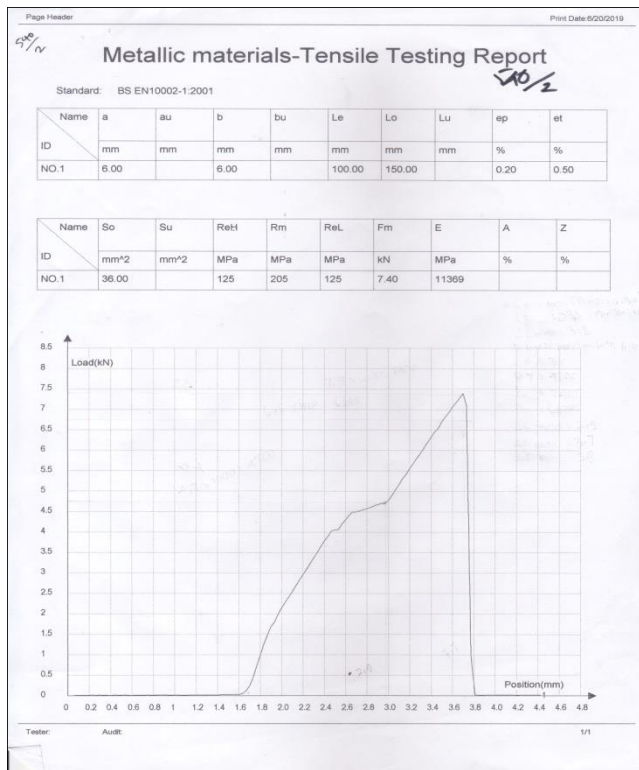
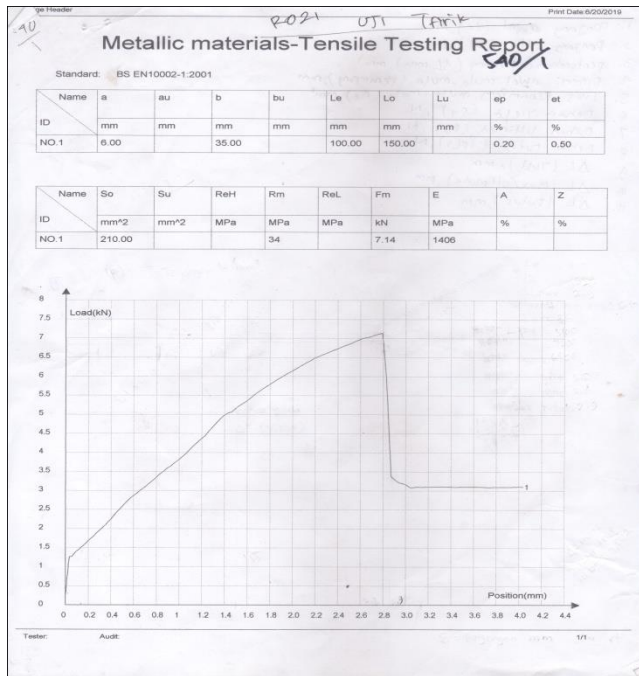


c. Alat uji kekerasan metode Rockwell



d. Alat Uji Tarik

Hasil Pengujian Kekuatan Tarik



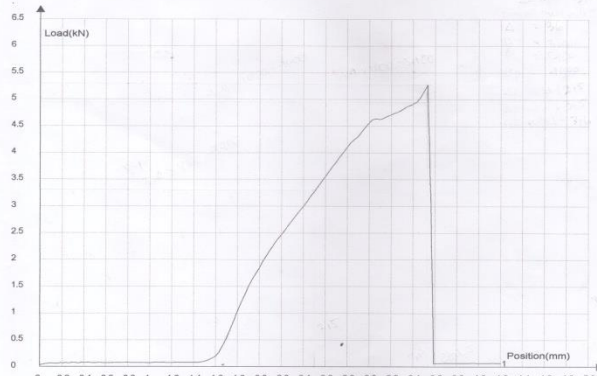
50/1

Metallic materials-Tensile Testing Report

Standard: BS EN10002-1:2001

Name	a	au	b	bu	Le	Lo	Lu	ep	et
ID	mm	mm	mm	mm	mm	mm	mm	%	%
NO.1	6.00		6.00		100.00	150.00		0.20	0.50

Name	So	Su	ReH	Rm	ReL	Fm	E	A	Z
ID	mm ²	mm ²	MPa	MPa	MPa	kN	MPa	%	%
NO.1	36.00		129	146	129	5.27	7593		



Tester:

Audit:

1/1

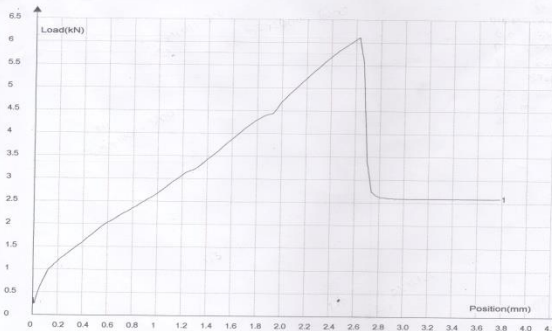
50/3

Metallic materials-Tensile Testing Report

Standard: BS EN10002-1:2001

Name	a	au	b	bu	Le	Lo	Lu	ep	et
ID	mm	mm	mm	mm	mm	mm	mm	%	%
NO.1	6.00		6.00		100.00	150.00		0.20	0.50

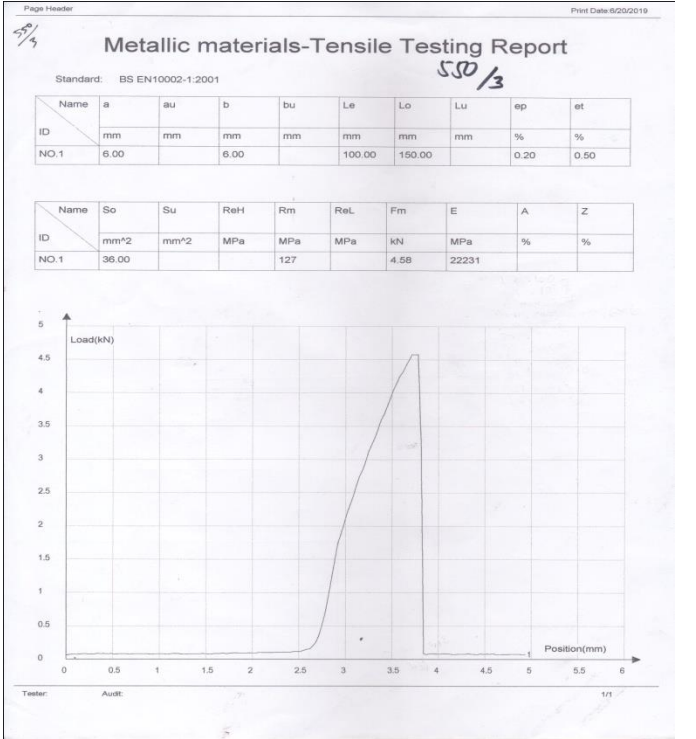
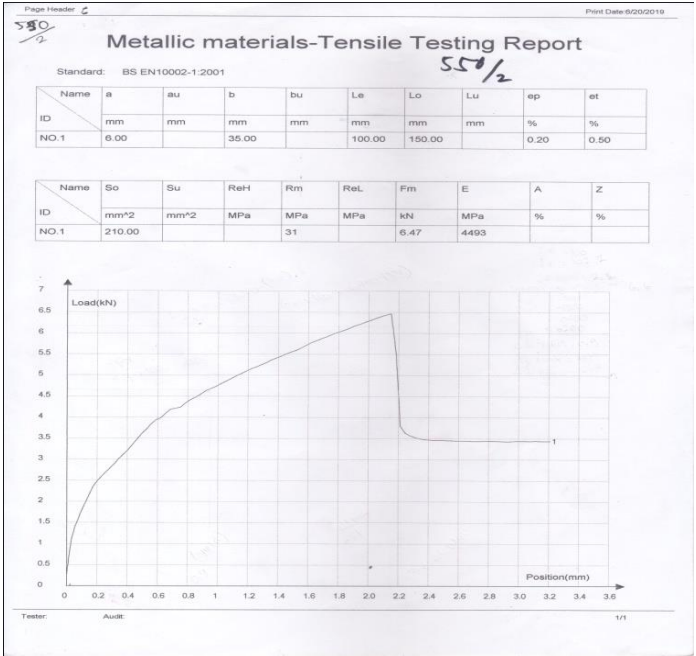
Name	So	Su	ReH	Rm	ReL	Fm	E	A	Z
ID	mm ²	mm ²	MPa	MPa	MPa	kN	MPa	%	%
NO.1	36.00			170		6.11	5995		

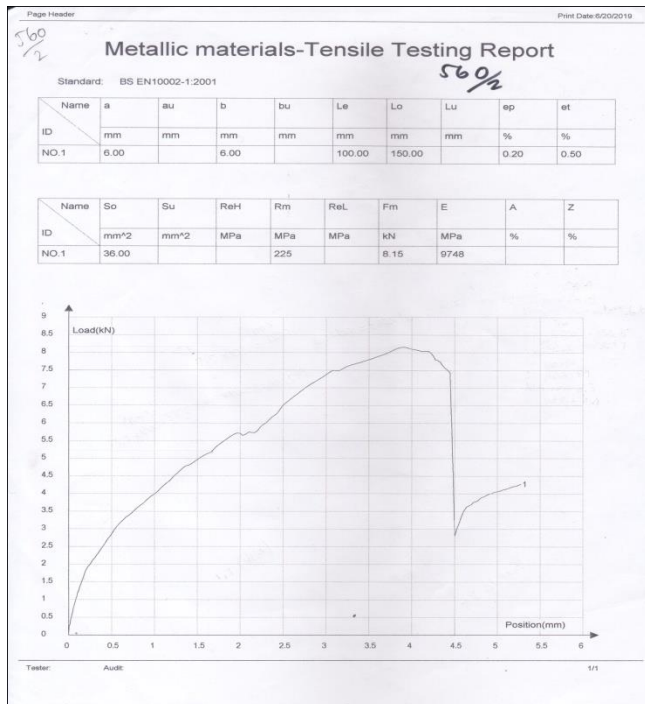
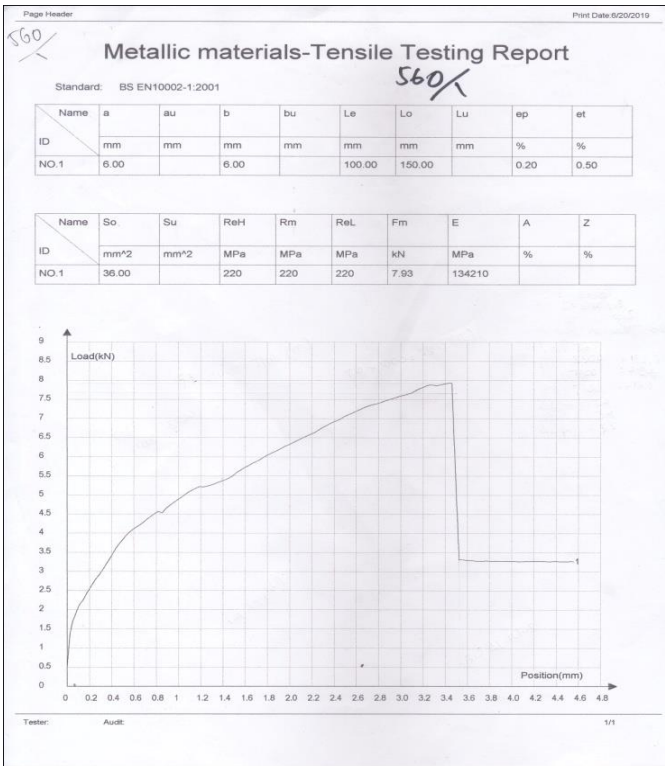


Tester:

Audit:

1/1





S60/3

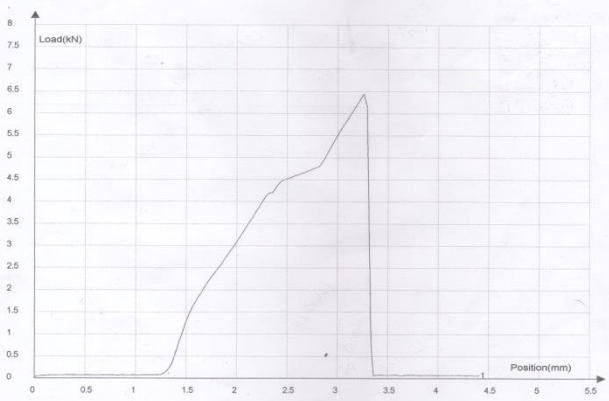
Metallic materials-Tensile Testing Report

S60/3

Standard: BS EN10002-1:2001

Name	a	au	b	bu	Le	Lo	Lu	ep	et
ID	mm	mm	mm	mm	mm	mm	mm	%	%
NO.1	6.00		6.00		100.00	150.00		0.20	0.50

Name	So	Su	ReH	Rm	ReL	Fm	E	A	Z
ID	mm ²	mm ²	MPa	MPa	MPa	kN	MPa	%	%
NO.1	36.00			179		6.44	9181		



Tester:

Audit:

1/1

Hasil Pengujian Kekerasan

Laboratorium Material Teknik
Teknik Industri UNTAG- Surabaya
LEMBAR DATA UJI KEKERASAN / METODE ROCKWELL

Nama : _____

NBI : _____

Tanggal Pengujian : _____

Data Hasil Pengujian Kekerasan

NO	BENDA UJI	KONDISI INDENTASI	INDENTASI	Kekerasan Skala		KETERANGAN
				HRA	HRA RATA 2	
1	SAO / 1	P = 100 KG t = 5 Detik	1/16 Ball (Red)	69	42	
				69	42,5	
				65,5	52	
				71	68	
				70	41	

NO	BENDA UJI	KONDISI INDENTASI	INDENTASI	Kekerasan Skala		KETERANGAN
				HRA	HRA RATA 2	
2	Aluminium SAO / 2	P = 100 KG t = 5 Detik	1/16 Ball (Red)	71	62	
				72,5	46,5	
				70	43	
				60,5	38,5	
				63,5	41,5	

NO	BENDA UJI	KONDISI INDENTASI	INDENTASI	Kekerasan Skala		KETERANGAN
				HRA	HRA RATA 2	
3	SAO / 3	P = 100 KG t = 5 Detik	1/16 Ball (Red)	65	43,5	
				71	42,5	
				71,5	50	
				75	48	
				70	47	



Laboratorium Material Teknik
Teknik Industri UNTAG- Surabaya
LEMBAR DATA UJI KEKERASAN / METODE ROCKWELL

Nama :
NBI :
Tanggal Pengujian :

Data Hasil Pengujian Kekerasan *stela*

NO	BENDA UJI	KONDISI INDENTASI	INDENTASI	HRC		KETERANGAN
				HRC	HRC	
1	Aluminium SS0/1	P = 100 KG t = 5 Detik	1/16 (Red)	SB	37	
				56,5	39,5	
				57	33	
				57,5	35,5	
				57,5	39	

NO	BENDA UJI	KONDISI INDENTASI	INDENTASI	HRC		KETERANGAN
				HRC	HRC	
2	Aluminium SS0/2	P = 100 KG t = 5 Detik	1/10 Ball (Red)	65	37	
				65,5	40,5	
				70	42,5	
				60,5	38	
				59,5	36,5	

NO	BENDA UJI	KONDISI INDENTASI	INDENTASI	HRC		KETERANGAN
				HRC	HRC	
3	Aluminium SS0/3	P = 100 KG t = 5 Detik	1/10 (Red)	57	35,5	
				65	36,5	
				63,5	38,5	
				66	35	
				66,5	42	



Laboratorium Material Teknik

Teknik Industri UNTAG- Surabaya

LEMBAR DATA UJI KEKERASAN / METODE ROCKWELL

Nama :

NBI :

Tanggal Pengujian :

Data Hasil Pengujian Kekerasan *skala*

NO	BENDA UJI	KONDISI INDENTASI	INDENTASI	HRA	HRC	KETERANGAN
1	Aluminium 500/1	P = 100 KG t = 5 Detik	1/16 (Red)	62,5	39,5	
				59,5	38,5	
				60,5	42	
				56	33,5	
				56	35	

NO	BENDA UJI	KONDISI INDENTASI	INDENTASI	HRA	HRC	KETERANGAN
2	Aluminium 500/2	P = 100 KG t = 5 Detik	1/16 Ball (Red)	74,5	49	
				78,5	48,5	
				76,5	53	
				73	46,5	
				74,5	49,5	

NO	BENDA UJI	KONDISI INDENTASI	INDENTASI	HRA	HRC	KETERANGAN
3	Aluminium 500/3	P = 100 KG t = 5 Detik	1/16 (Red)	62,5	39,5	
				68	45	
				60	40	
				68,5	45,5	
				68	42	