

## LAMPIRAN

### 1. Proses Elektrodes



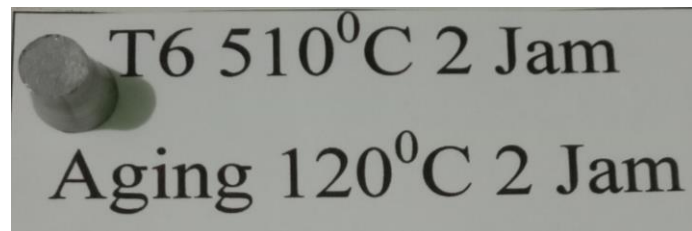
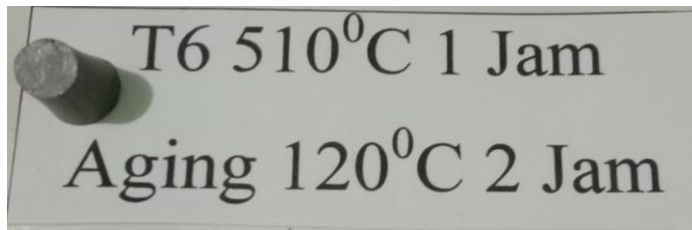



## 2. Proses Pengecoran Gravity Die Casting






### 3. Spesimen







T6 510<sup>0</sup>C 1 Jam  
Aging 140<sup>0</sup>C 2 Jam




T6 510<sup>0</sup>C 1 Jam  
Aging 160<sup>0</sup>C 2 Jam



T6 510<sup>0</sup>C 2 Jam  
Aging 160<sup>0</sup>C 2 Jam



T6 510<sup>0</sup>C 1 Jam  
Aging 140<sup>0</sup>C 2 Jam  
SEM-EDX

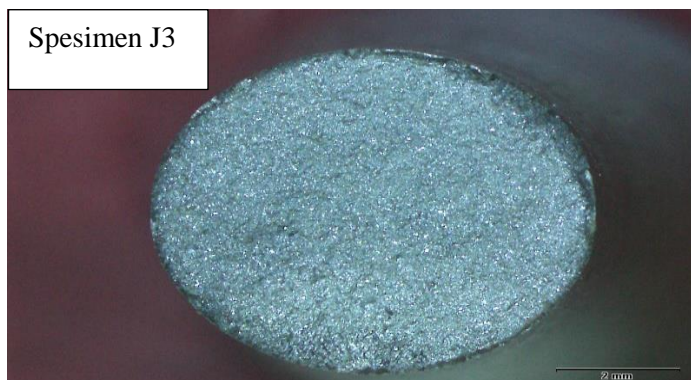


T6 510<sup>0</sup>C 2 Jam  
Aging 140<sup>0</sup>C 2 Jam  
SEM-EDX

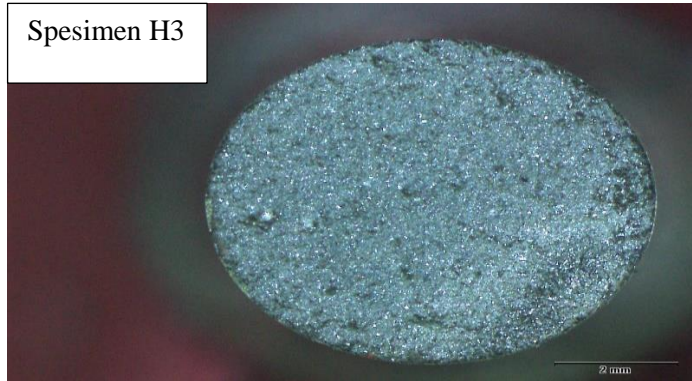
#### 4. Pengujian makro



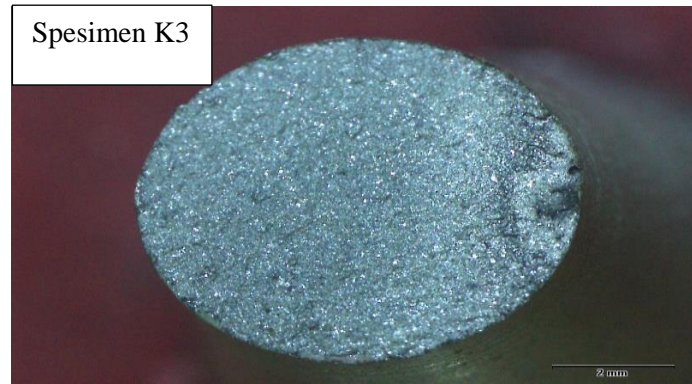
#### 5. Hasil Foto Patahan Makro



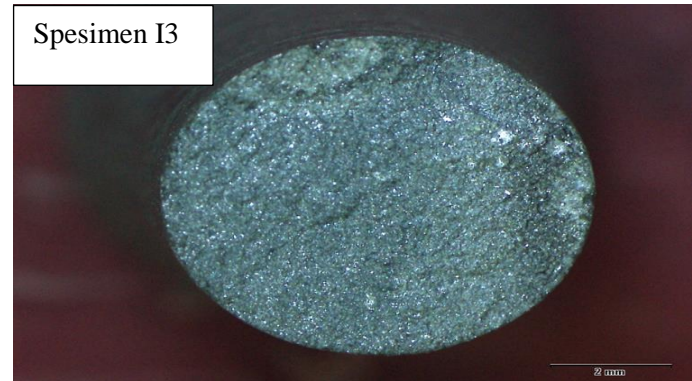
Spesimen H3

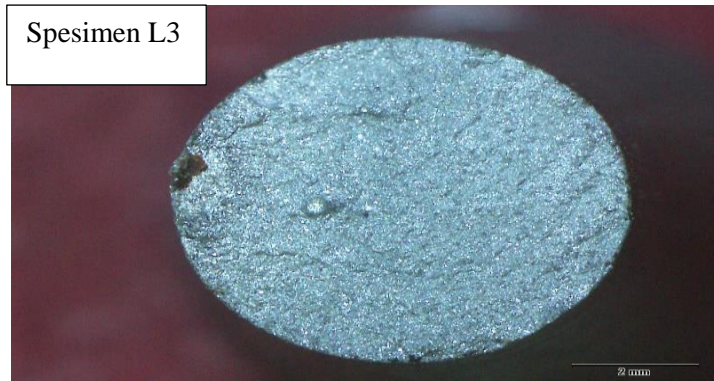


Spesimen K3

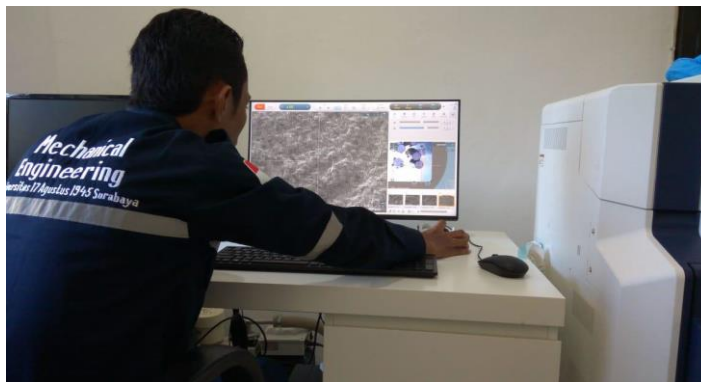


Spesimen I3

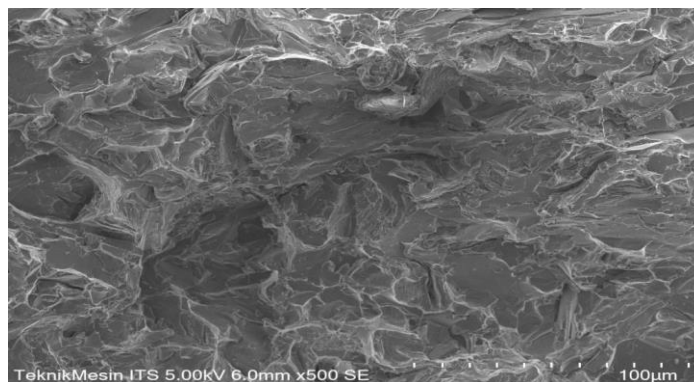




## 6. Pengujian SEM

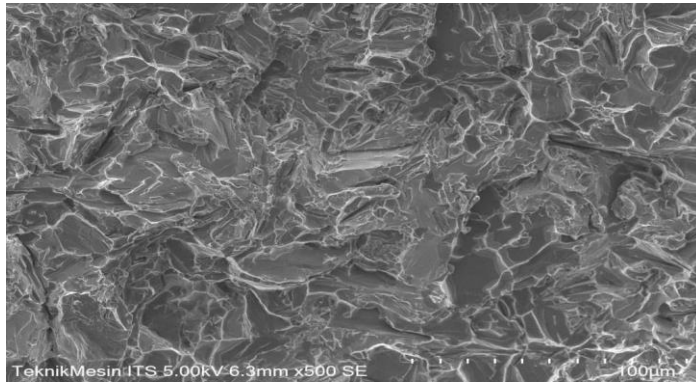


## 7. Hasil Foto Patahan SEM Spesimen G3

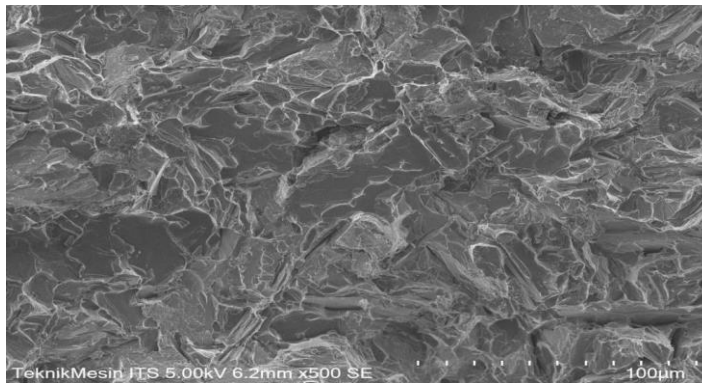




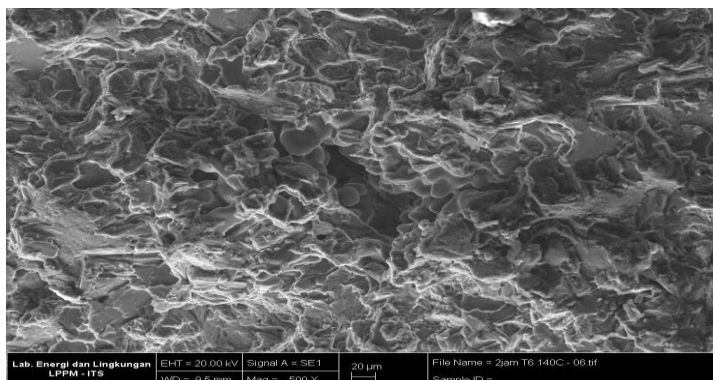
Spesimen J3



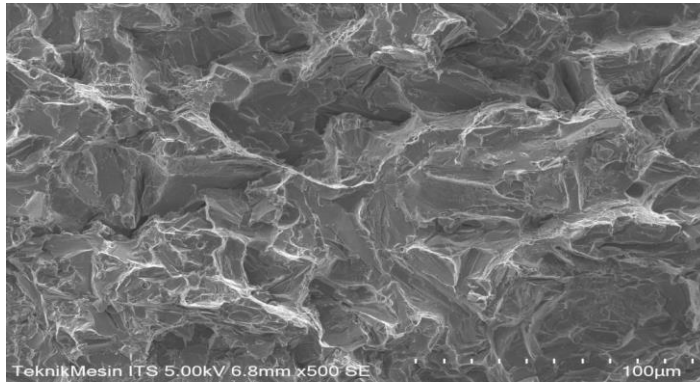
Spesimen H3



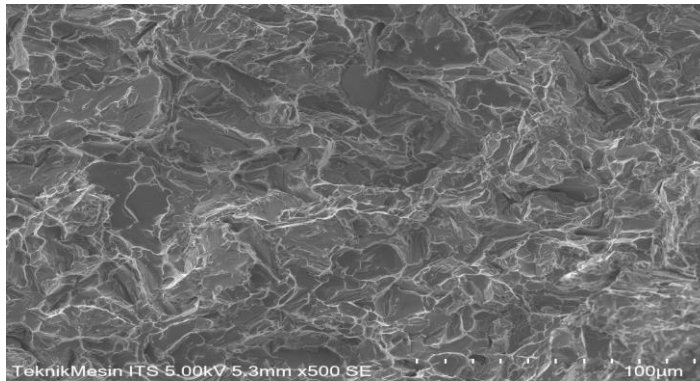
Spesimen K3



### Spesimen I3

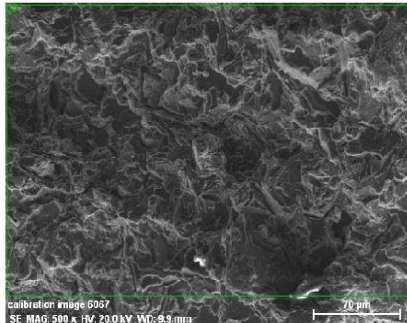


### Spesimen L3

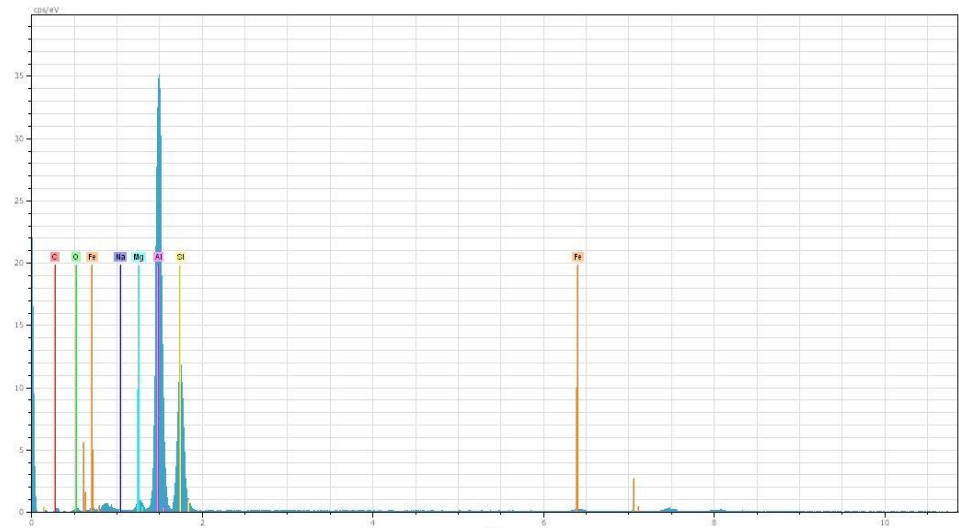


# Hasil Foto SEM EDX Spesimen B3

1jam T6 140C



calibration image 6067 Date: 6/26/2019  
 1:54:54 PM Image size: 512 x  
 384 Mag: 500x HV: 20.0kV

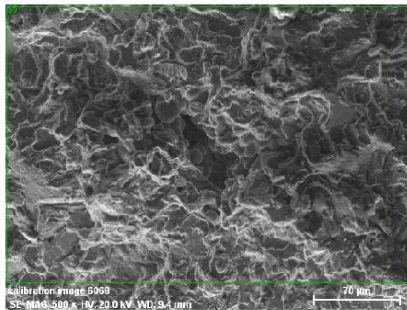


55 Date: 6/26/2019 1:55:14 PM HV: 20.0kV Puls th.: 5.85kcps

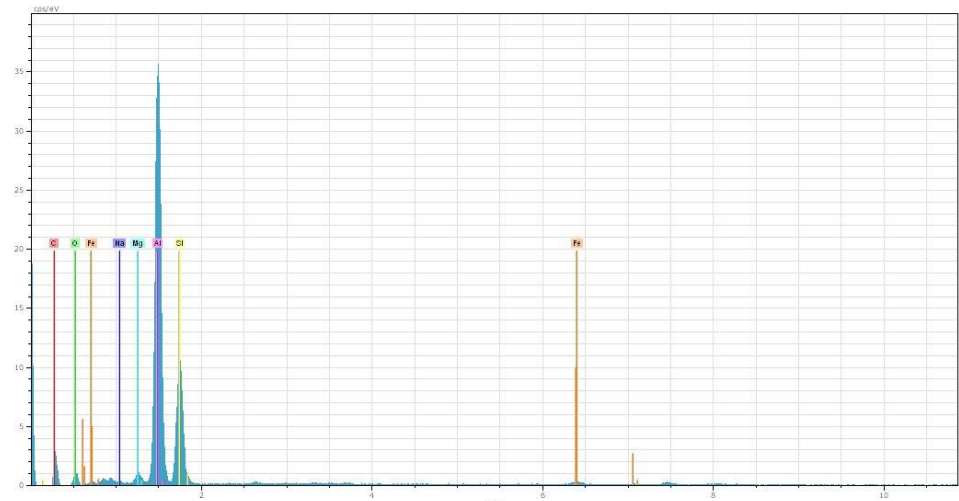
El AN	Series	unn. C [wt.%]	norm. C [wt.%]	Atom. C [at.%]	Error [%]
Al 13	K-series	49.28	56.52	53.64	2.4
Si 14	K-series	27.59	31.65	28.85	1.2
C 6	K-series	3.99	4.57	9.75	1.2
O 8	K-series	2.89	3.32	5.31	1.0
Fe 26	K-series	2.52	2.89	1.33	0.1
Mg 12	K-series	0.74	0.85	0.90	0.1
Na 11	K-series	0.18	0.21	0.23	0.0
Total:		87.19	100.00	100.00	

# Hasil Foto SEM EDX Spesimen K3

2jam T6 140C



calibration image 6068 Date: 6/26/2019  
2:00:12 PM Image size: 512 x  
384 Mag: 500x HV: 20.0kV



55 Date: 6/26/2019 2:00:37 PM HV: 20.0kV Puls th.: 6.09kcp

El	AN	Series	unn. C [wt.%]	norm. C [wt.%]	Atom. C [at.%]	Error [%]
Al	13	K-series	42.57	44.94	34.31	2.1
Si	14	K-series	18.49	19.52	14.32	0.8
C	6	K-series	18.42	19.44	33.34	3.0
O	8	K-series	11.91	12.58	16.19	2.4
Fe	26	K-series	2.30	2.43	0.90	0.1
Mg	12	K-series	0.68	0.71	0.60	0.1
Na	11	K-series	0.36	0.38	0.34	0.1
Total:			94.73	100.00	100.00	

6/26/2019

4. Page