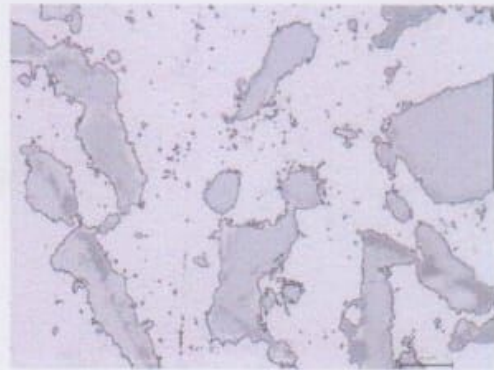
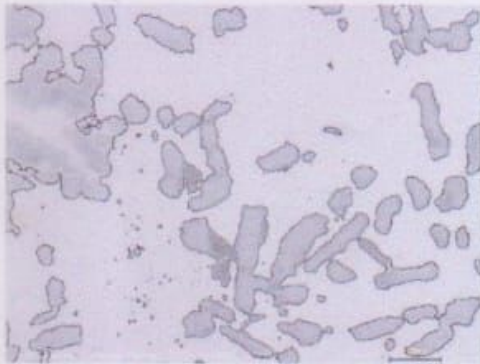




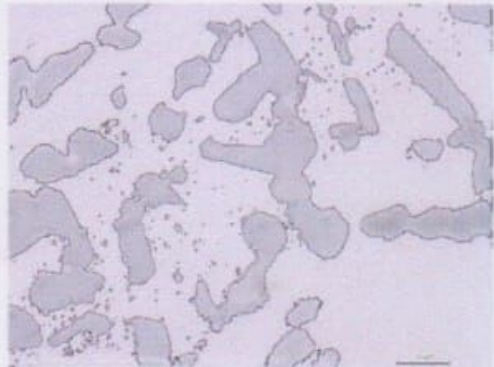
Media air sumur 100 C (c)



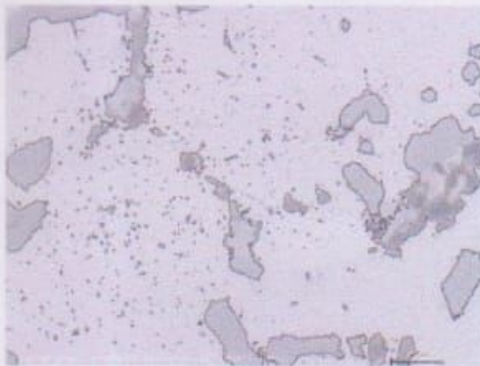
Media air sumur 80 C (c)



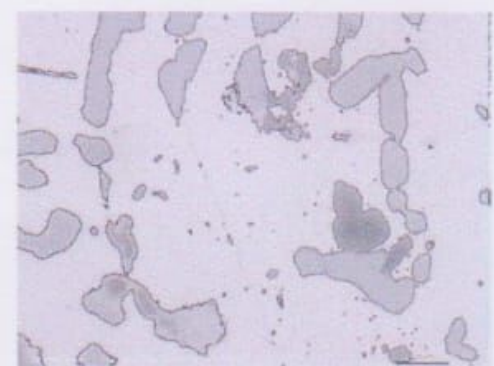
Media air sumur 60 C (c)



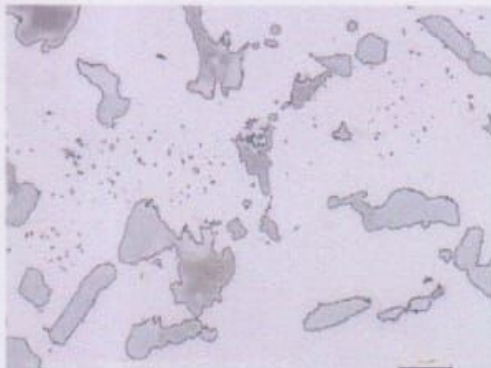
Media larutan garam 100 C (TMA)

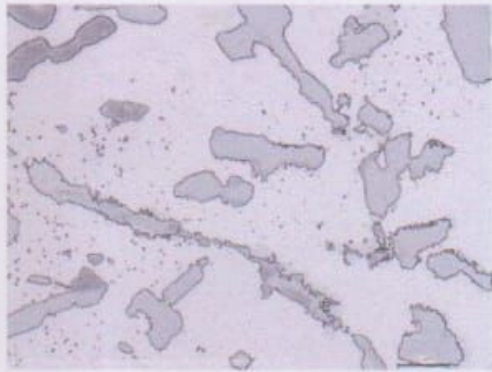


Media larutan garam 80 C (TMA)

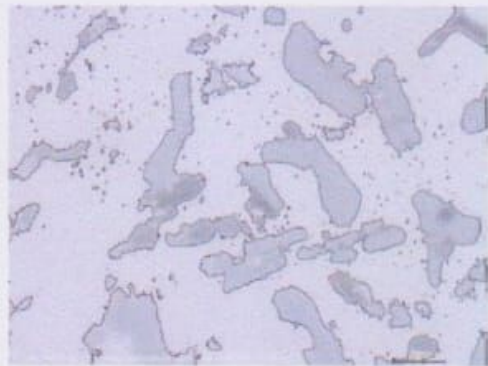


Media larutan garam 60 C (TMA)

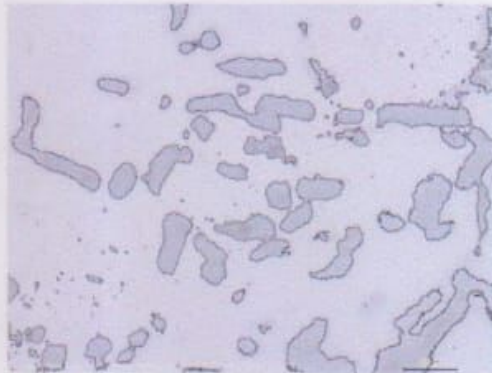




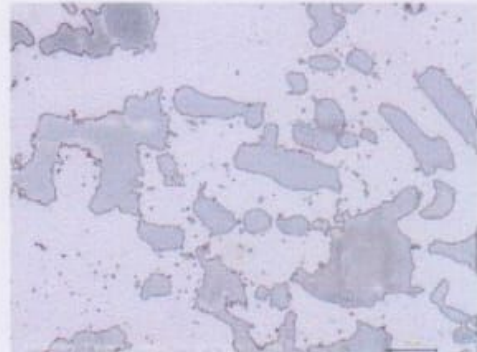
Media oli SAE 40 60 C (TMA)



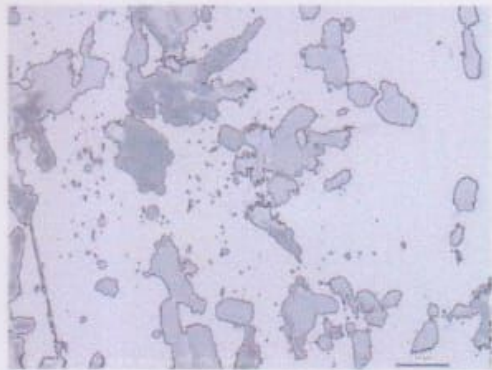
Media oli SAE 40 100 C (b)



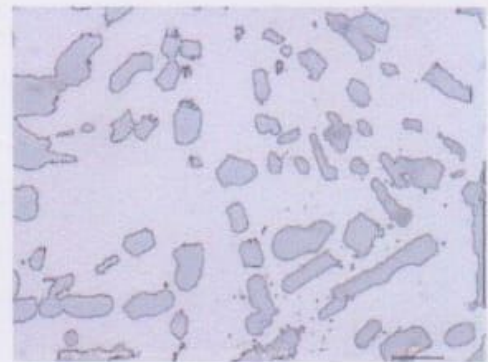
Media oli SAE 40 80 C (b)



Media oli SAE 40 60 C (b)



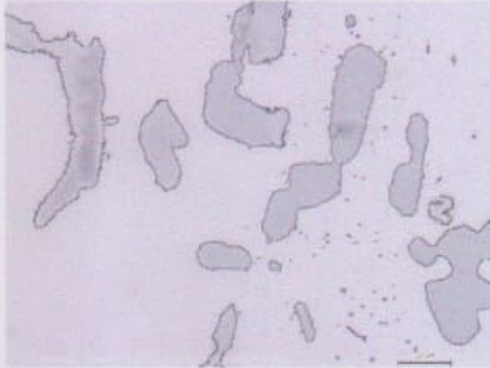
Media oli SAE 40 100 C (c)



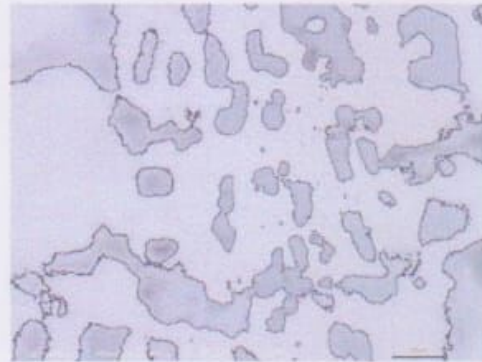
Media oli SAE 40 80 C (c)



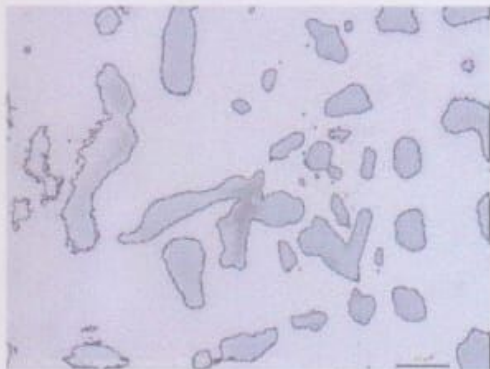
Media larutan garam 100 C (b)



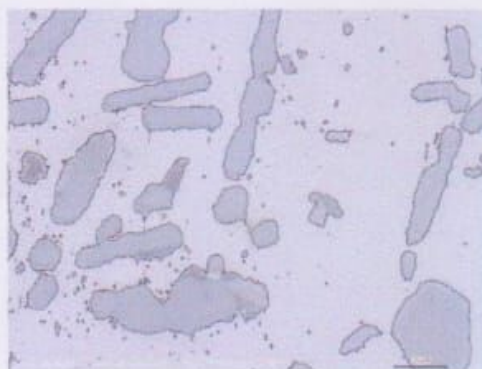
Media larutan garam 80 C (b)



Media larutan garam 60 C (b)



Media larutan garam 100 C (c)



Media larutan garam 80 C (c)



Media larutan garam 60 C (c)



Media oli SAE 40 100 C (TMA)





Media oli SAE 40 80 C (TMA)





UNIVERSITAS 17 AGUSTUS 1945 SURABAYA
LEMBAGA PENELITIAN DAN PENGABDIAN KEPADA MASYARAKAT
Gedung H.101.
Jl. Semolowaru No. 45 Surabaya
Telp. 031-5931800 Psw. 183, Fax. 031-5929767

SURAT PERINTAH PERJALANAN DINAS (SPPD)

	<p>I. Berangkat dari : (tempat kedudukan) pada tanggal : ke : Ketua :</p>
<p>II. Tiba di : Lab. M pada tanggal : Kepala :</p>	<p>Berangkat dari : UNTAG SURABAYA ke : pada tanggal : 18 Juni 2018 Kepala : Lab. Metalurgi ITS</p> 
<p>III. Tiba di : Lab. Metalurgi, ITS pada tanggal : 18 Juni 2018 Kepala : Lab. Metalurgi ITS</p> 	<p>Berangkat dari : ke : pada tanggal : Kepala :</p>
<p>IV. Tiba kembali di : pada tanggal :</p>	
<p>Catatan lain - lain :</p>	