

LAMPIRAN

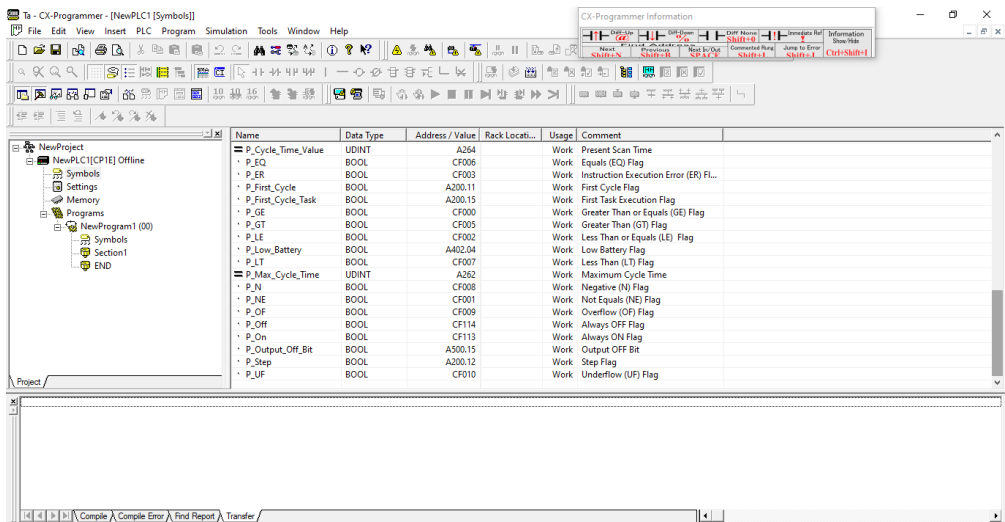
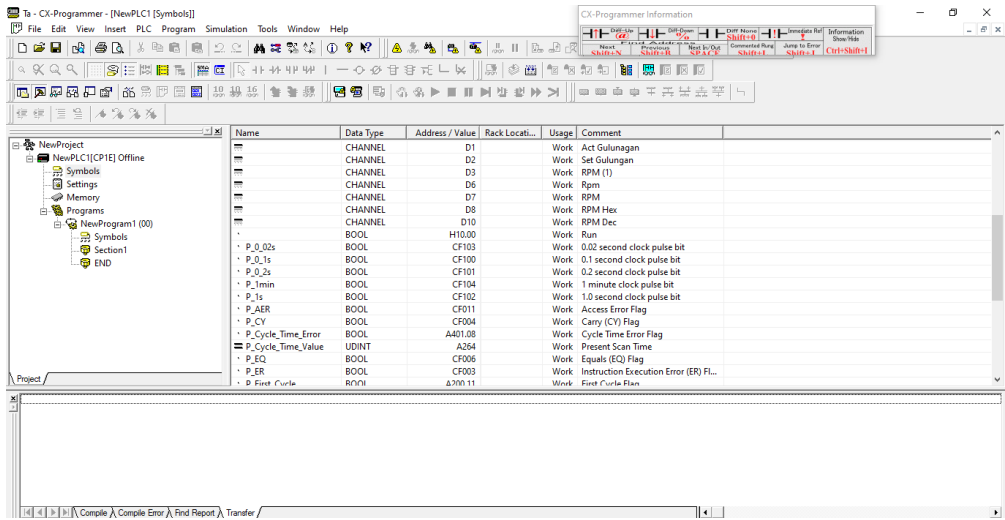
Lampiran 1

The screenshot shows the CX-Programmer interface with a table of variable declarations. The table has columns for Name, Data Type, Address / Value, Rack Locati..., Usage, and Comment. The project tree on the left shows a new program named 'NewProgram1 (00)' with a section 'Section1' containing an 'END' symbol.

Name	Data Type	Address / Value	Rack Locati...	Usage	Comment
	BOOL	0.00		In	Start
	BOOL	0.01		In	sensor proximity
	BOOL	0.02		In	start
	BOOL	0.03		In	stop
	BOOL	0.04		In	Reset
	BOOL	10.00		Work	Start
	BOOL	10.01		Work	Start
	BOOL	10.02		Work	Stop
	BOOL	10.03		Work	Inc Speed
	BOOL	10.04		Work	Dec Speed
	BOOL	10.05		Work	Reset Count
	BOOL	11.00		Work	Gulungan tercapai (1)
	BOOL	100.01		Out	Fw
	BOOL	100.02		Out	Sp 1
	BOOL	100.03		Out	Sp 2
	BOOL	100.04		Out	Sp 3
	BOOL	C001		Work	Hitung gulungan
	CHANNEL	D1		Work	Act Gulungan
	CHANNEL	D2		Work	Set Gulungan
	CHANNEL	D3		Work	RPM (1)

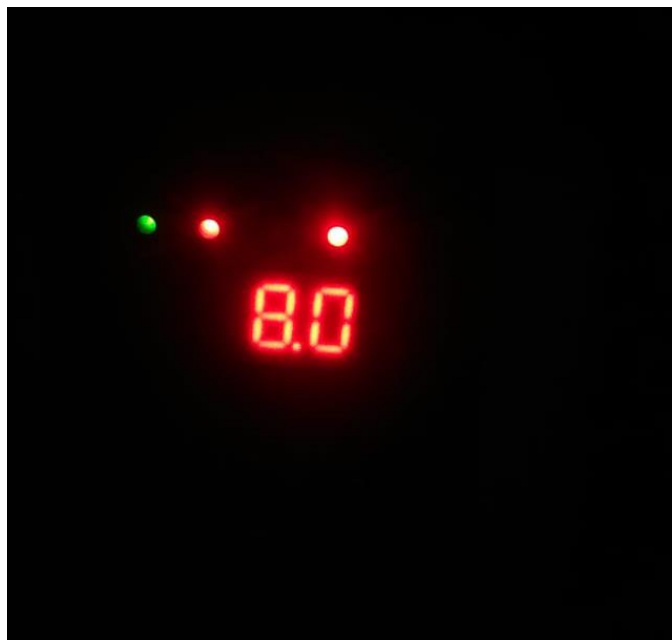
This screenshot is identical to the one above, showing the same variable declaration table in the CX-Programmer software. The table lists various Boolean variables for control logic and channel variables for actuator and speed monitoring.

Name	Data Type	Address / Value	Rack Locati...	Usage	Comment
	BOOL	0.00		In	Start
	BOOL	0.01		In	sensor proximity
	BOOL	0.02		In	start
	BOOL	0.03		In	stop
	BOOL	0.04		In	Reset
	BOOL	10.00		Work	Start
	BOOL	10.01		Work	Start
	BOOL	10.02		Work	Stop
	BOOL	10.03		Work	Inc Speed
	BOOL	10.04		Work	Dec Speed
	BOOL	10.05		Work	Reset Count
	BOOL	11.00		Work	Gulungan tercapai (1)
	BOOL	100.01		Out	Fw
	BOOL	100.02		Out	Sp 1
	BOOL	100.03		Out	Sp 2
	BOOL	100.04		Out	Sp 3
	BOOL	C001		Work	Hitung gulungan
	CHANNEL	D1		Work	Act Gulungan
	CHANNEL	D2		Work	Set Gulungan
	CHANNEL	D3		Work	RPM (1)



Gambar Instruction Ladder Diagram

Lampiran 2

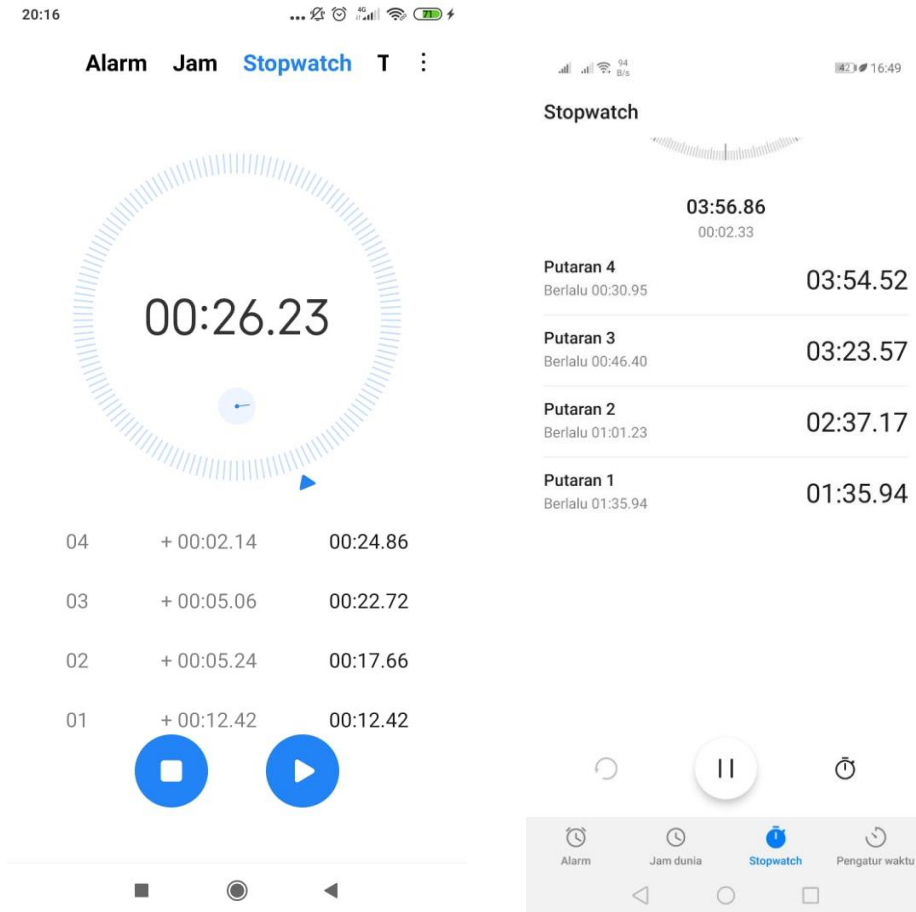






Gambar Pengukuran Frekuensi, Tegangan dan Arus

Lampiran 3



Gambar Pengujian Kecepatan