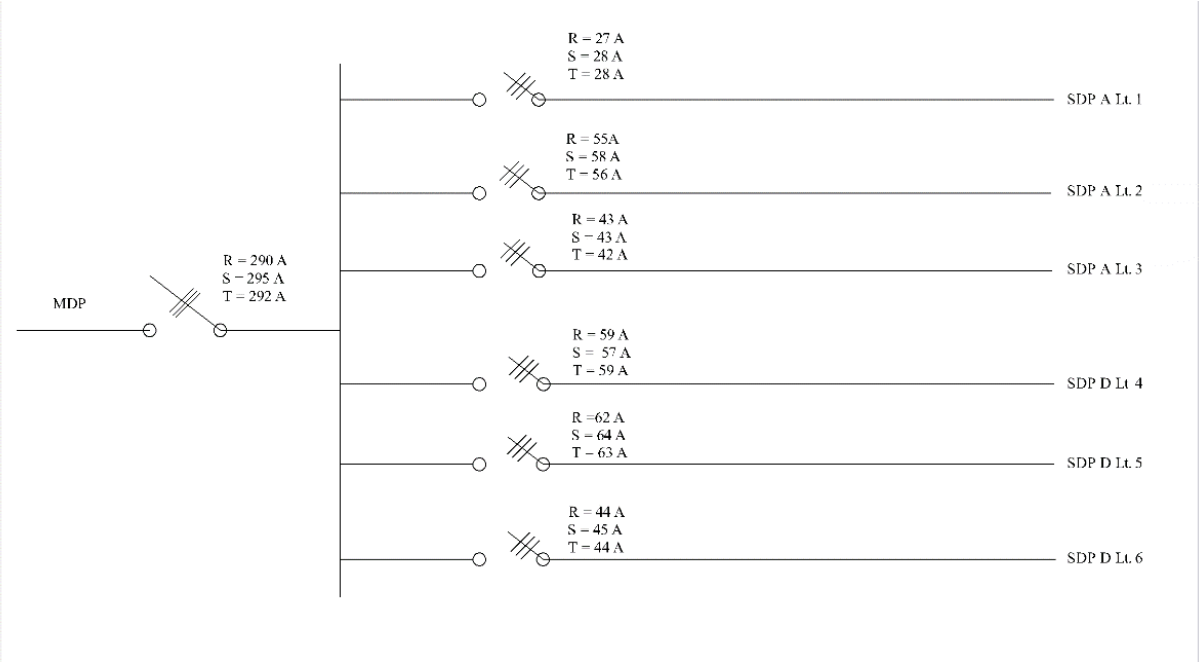


Daftar Lampiran

1. Single line diagram
2. Perhitungan lux gedung Kantor Pusat PT. Varia Usaha Beton sebelum konservasi
3. Perhitungan kapasitas AC gedung Kantor Pusat PT. Varia Usaha Beton sebelum konservasi
4. Perhitungan lux gedung Kantor Pusat PT. Varia Usaha Beton sesudah konservasi
5. Perhitungan kapasitas AC gedung Kantor Pusat PT. Varia Usaha Beton sesudah konservasi
6. Data beban gedung Kantor Pusat PT. Varia Usaha Beton sebelum konservasi
7. Data beban gedung Kantor Pusat PT. Varia Usaha Beton sesudah konservasi
8. Katalog Lampu
9. Dokumentasi

1. Single Line Diagram



Gambar Single Line Panel MDP Gedung Kantor Pusat PT. VUB Sebelum Konservasi

NO GROUP	JENIS LAMPU			JENIS ELEKTRONIK										TOTAL BEBAN (WATT)	TOTAL ARUS (A)
	LAMPU TL 36 WATT	LAMPU CF 24 WATT	LAMPU CF 15 WATT	AC 2.5 PK 2210 W	AC 2 PK 1940W	KOMPUTER 426 W	PRINTER 30W	SPEAKER PASIF 140 W	AMPLI 200 W	PROYEKTOR 270 W	KULKAS 90 W	DISPENSER 300 W	EXHAUST FAN 30 W		
SDP LT.1 R	16	2	9	1	1		2						4	5181	27
S	16	2	9	1	1		1			1			2	5251	28
T	16	1	10	1	1		1		1				2	5172	28

Gambar Single Line Panel SDP LT. 1 Gedung Kantor Pusat PT. VUB Sebelum Konservasi

NO GROUP	JENIS LAMPU			JENIS ELEKTRONIK										TOTAL BEBAN (WATT)	TOTAL ARUS (A)
	LAMPU TL 36 WATT	LAMPU CF 24 WATT	LAMPU CF 15 WATT	AC 2.5 PK 2210 W	AC 2 PK 1940W	KOMPUTER 426 W	PRINTER 30W	SPEAKER PASIF 140 W	AMPLI 200 W	PROYEKTOR 270 W	KULKAS 90 W	DISPENSER 300 W	EXHAUST FAN 30 W		
SDP LT.2 R	7	24	5	2		7								8249	43
S	6	25	4	2		7								8230	43
T	7	24	5		2	7							4	7829	42

Gambar Single Line Panel SDP LT. 2 Gedung Kantor Pusat PT. VUB Sebelum Konservasi

NO GROUP	JENIS LAMPU			JENIS ELEKTRONIK										TOTAL BEBAN (WATT)	TOTAL ARUS (A)
	LAMPU TL 36 WATT	LAMPU CF 24 WATT	LAMPU CF 15 WATT	AC 2.5 PK 2210 W	AC 2 PK 1940W	KOMPUTER 426 W	PRINTER 30W	SPEAKER PASIF 140 W	AMPLI 200 W	PROYEKTOR 270 W	KULKAS 90 W	DISPENSER 300 W	EXHAUST FAN 30 W		
R	12	17	5	2		12	2						6	10591	55
S	12	17	4	1		18	2					1		11042	58
T	12	18	5	2		12	3				1			1055	56

Gambar Single Line Panel SDP LT. 3 Gedung Kantor Pusat PT. VUB Sebelum Konservasi

NO GROUP	JENIS LAMPU			JENIS ELEKTRONIK										TOTAL BEBAN (WATT)	TOTAL ARUS (A)
	LAMPU TL 36 WATT	LAMPU CF 24 WATT	LAMPU CF 15 WATT	AC 2.5 PK 2210 W	AC 2 PK 1940W	KOMPUTER 426 W	PRINTER 30W	SPEAKER PASIF 140 W	AMPLI 200 W	PROYEKTOR 270 W	KULKAS 90 W	DISPENSER 300 W	EXHAUST FAN 30 W		
R	20		5	1		20	3							11455	59
S	20		5	1		18	6						4	10813	57
T	20		4	2		14								11004	59

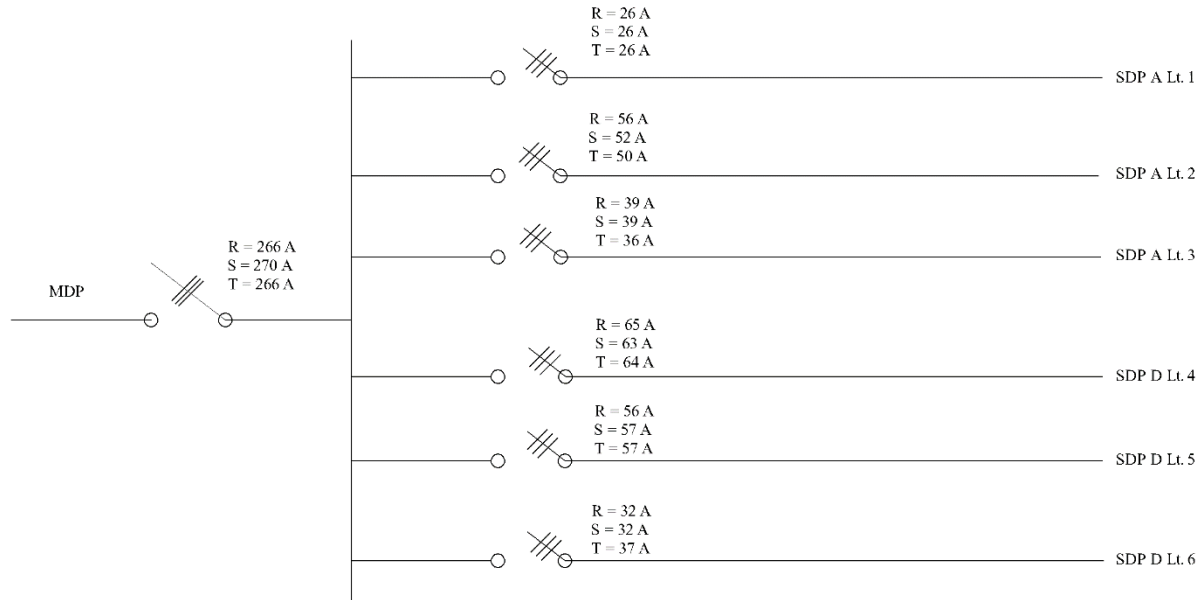
Gambar Single Line Panel SDP LT. 4 Gedung Kantor Pusat PT. VUB Sebelum Konservasi

NO GROUP	JENIS LAMPU			JENIS ELEKTRONIK										TOTAL BEBAN (WATT)	TOTAL ARUS (A)
	LAMPU TL 36 WATT	LAMPU CF 24 WATT	LAMPU CF 15 WATT	AC 2.5 PK 2210 W	AC 2 PK 1940W	KOMPUTER 426 W	PRINTER 30W	SPEAKER PASIF 140 W	AMPLI 200 W	PROYEKTOR 270 W	KULKAS 90 W	DISPENSER 300 W	EXHAUST FAN 30 W		
R	8	27	5	1		3	12	2					4	12059	62
S	8	26	5	1		4	8							12091	64
T	8	27	4	2		3	12							11864	63

Gambar Single Line Panel SDP LT. 5 Gedung Kantor Pusat PT. VUB Sebelum Konservasi

NO GROUP	JENIS LAMPU			JENIS ELEKTRONIK										TOTAL BEBAN (WATT)	TOTAL ARUS (A)
	LAMPU TL 36 WATT	LAMPU CF 24 WATT	LAMPU CF 15 WATT	AC 2.5 PK 2210 W	AC 2 PK 1940W	KOMPUTER 426 W	PRINTER 30W	SPEAKER PASIF 140 W	AMPLI 200 W	PROYEKTOR 270 W	KULKAS 90 W	DISPENSER 300 W	EXHAUST FAN 30 W		
R		41	5	3				4	1	4	4			8849	44
S		41	5	3				4	1	4				8849	45
T		42	4	2				8	2	8			4	8208	44

Gambar Single Line Panel SDP LT. 6 Gedung Kantor Pusat PT. VUB Sebelum Konservasi



Gambar Single Line Panel MDP Gedung Kantor Pusat PT. VUB Sesudah Konservasi

NO GROUP	JENIS LAMPU			JENIS ELEKTRONIK													TOTAL BEBAN (WATT)	TOTAL ARUS (A)		
	LED TUBE 26 WATT	LED BLUB 14 WATT	LED BLUB 12 WATT	AC 5 PK	AC 3 PK	AC 2.5 PK	AC 2 PK	AC 1 PK	KOMPUTER	PRINTER	SPEAKER PASH	AMPLI	PROYEKTOR	KULKAS	DISPENSER	EXHAUST FAN				
SDP LT.1 R	16	2	9		1		1									2			4822	25
S	16	2	9		1		1						1					1	4892	26
T	16	1	10		1		1					1	1					2	4820	26

Gambar Single Line Panel SDP LT. 1 Gedung Kantor Pusat PT. VUB Sesudah Konservasi

NO GROUP	JENIS LAMPU			JENIS ELEKTRONIK													TOTAL BEBAN (WATT)	TOTAL ARUS (A)		
	LED TUBE 26 WATT	LED BLUB 14 WATT	LED BLUB 12 WATT	AC 5 PK	AC 3 PK	AC 2.5 PK	AC 2 PK	AC 1 PK	KOMPUTER	PRINTER	SPEAKER PASH	AMPLI	PROYEKTOR	KULKAS	DISPENSER	EXHAUST FAN				
SDP LT.2 R	12	17	5		1	1			12	2							1	6	9722	50
S	12	17	4			1			18	2									9856	52
T	12	18	5		1	1			12	3				1					9376	50

Gambar Single Line Panel SDP LT. 2 Gedung Kantor Pusat PT. VUB Sesudah Konservasi

NO GROUP	JENIS LAMPU			JENIS ELEKTRONIK													TOTAL BEBAN (WATT)	TOTAL ARUS (A)
	LED TUBE 26 WATT	LED BLUB 14 WATT	LED BLUB 12 WATT	AC 5 PK	AC 3 PK	AC 2.5 PK	AC 2 PK	AC 1 PK	KOMPUTER	PRINTER	SPEAKER PASIF	AMPLI	PROYEKTOR	KULKAS	DISPENSER	EXHAUST FAN		
SDP LT.3 R	7	24	5		1	1			8								7446	39
S	6	25	4		1	1			8								7422	39
T	7	24	5				2		5							4	6708	36

Gambar Single Line Panel SDP LT. 3 Gedung Kantor Pusat PT. VUB Sesudah Konservasi

NO GROUP	JENIS LAMPU			JENIS ELEKTRONIK													TOTAL BEBAN (WATT)	TOTAL ARUS (A)
	LED TUBE 26 WATT	LED BLUB 14 WATT	LED BLUB 12 WATT	AC 5 PK	AC 3 PK	AC 2.5 PK	AC 2 PK	AC 1 PK	KOMPUTER	PRINTER	SPEAKER PASIF	AMPLI	PROYEKTOR	KULKAS	DISPENSER	EXHAUST FAN		
SDP LT.4 R	20		5	1					18	3							12518	65
S	20		5	1					17								12002	63
T	24		4		2				17	6					4		12074	64

Gambar Single Line Panel SDP LT. 4 Gedung Kantor Pusat PT. VUB Sesudah Konservasi

NO GROUP	JENIS LAMPU			JENIS ELEKTRONIK													TOTAL BEBAN (WATT)	TOTAL ARIS (A)
	LED TUBE 26 WATT	LED BLUB 14 WATT	LED BLUB 12 WATT	AC 5 PK	AC 3 PK	AC 2.5 PK	AC 2 PK	AC 1 PK	KOMPUTER	PRINTER	SPEAKER PASIF	AMPLI	PROYEKTOR	KULKAS	DISPENSER	EXHAUST FAN		
SDP LT.5 R	8	27	5				2	1	13	2						4	10764	56
S	8	26	5				2	1	9								10806	57
T	8	27	4				3		10								10714	57

Gambar Single Line Panel SDP LT. 5 Gedung Kantor Pusat PT. VUB Sesudah Konservasi

NO GROUP	JENIS LAMPU			JENIS ELEKTRONIK													TOTAL BEBAN (WATT)	TOTAL ARIS (A)
	LED TUBE 26 WATT	LED BLUB 14 WATT	LED BLUB 12 WATT	AC 5 PK	AC 3 PK	AC 2.5 PK	AC 2 PK	AC 1 PK	KOMPUTER	PRINTER	SPEAKER PASIF	AMPLI	PROYEKTOR	KULKAS	DISPENSER	EXHAUST FAN		
SDP LT.6 R		42	5			3					5	1					6138	32
S		42	5			3					5	1					6138	32
T		42	4			2					6	2	4			4	6136	36

Gambar Single Line Panel SDP LT. 6 Gedung Kantor Pusat PT. VUB Sesudah Konservasi

2. Perhitungan lux gedung Kantor Pusat PT. Varia Usaha Beton sebelum konservasi

Tabel 1 Perhitungan Lux Gedung Kantor Pusat PT. Varia Usaha Beton Sebelum Konservasi

No.	Lantai	Ruangan	Dimensi			Luas (m ²)	Jumlah Titik		QI (Lumen)		Qt Terpasang (Lumen)	E Terhitung (lux)	E Standar (lux)
			P (m)	L (m)	T (m)		TL	CFL	TL	CFL			
1	Lantai 1	Lobi	15	12	3,5	180	34		2900		98600	285	350
		Ruang Rapat	12	7	3,5	84	14		2900		40600	251	300
		Ruang Tamu	7	4	3,5	28		5		1550	7750	144	150
		Toilet	5	5	3,5	25		14		900	12600	262	250
		Toilet	5	5	3,5	25		14		900	12600	262	250
2	Lantai 2	Ruang SDM	8	8	3,5	64	12		2900		34800	283	350
		Ruang Pengadaan dan Pergudangan	8	8	3,5	64	12		2900		34800	283	350
		Ruang Pemasaran	8	7	3,5	56	12		2900		34800	323	350
		Ruang Oprasional	8,5	6	3,5	51		22		1550	34100	348	350
		Ruang Precast	8,5	6	3,5	51		22		1550	34100	348	350
		Dapur	5	5	3,5	25		8		1550	12400	258	250
		Toilet	5	5	3,5	25		14		900	12600	262	250
3	Lantai 3	Ruang SISMAN	9	7	3,5	63		27		1550	41850	345	350
		Ruang SISFO	9	7	3,5	63		27		1550	41850	345	350
		Musholah	11	7	3,5	77		19		1550	29450	199	200

		Ruang BSP	11	5	3,5	55	10		2900		29000	274	350
		Ruang Oprasional	11	5	3,5	55	10		2900		29000	274	350
		Toilet	5	5	3,5	25		14		900	12600	262	250
4	Lantai 4	Ruang Bendahara	12,5	7	3,5	87,5	16		2900		46400	276	350
		Ruang Penagihan	12,5	7	3,5	87,5	16		2900		46400	276	350
		Ruang Akuntansi	21	7	3,5	147	28		2900		81200	287	350
		Toilet	5	5	3,5	25		14		900	12600	262	250
5	Lantai 5	Ruang Direktur Utama	4	4	3,5	16		7		1550	10850	353	350
		Ruang Direktur	4	4	3,5	16		7		1550	10850	353	350
		Ruang Sekertariat	8	8	3,5	64		28		1550	43400	353	350
		Ruang Kepala Bagian	11	8	3,5	88		38		1550	58900	348	350
		Ruang Kepala Bagian	22	6	3,5	132	24		2900		69600	274	350
		Toilet	5	5	3,5	25		14		900	12600	262	250
6	Lantai 6	Ruang Rapat 1	12,5	8	3,5	100		37		1550	57350	298	300
		Ruang Rapat 2	12,5	8	3,5	100		37		1550	57350	298	300
		Ruang Rapat 3	11	6	3,5	66		25		1550	38750	305	300
		Ruang Rapat 4	11	6	3,5	66		25		1550	38750	305	300
		Toilet	5	5	3,5	25		14		900	12600	262	250

3. Perhitungan kapasitas AC gedung Kantor Pusat PT. Varia Usaha Beton sebelum konservasi

Tabel 2 Perhitungan AC Gedung Kantor Pusat PT. Varia Usaha Beton Sebelum Konservasi

No.	Lantai	Ruangan	Dimensi			Luas (m ²)	Jumlah AC Terpasang	Daya (Watt)	Kapasitas AC Terpasang (PK)	BTU/Jam Terpasang	BTU/Jam di Butuhkan
			P (m)	L (m)	T (m)						
1	Lantai 1	Lobi	15	12	3,5	180	3	2210	2,5	7200	90000
		Ruang Rapat	12	7	3,5	84	2	1940	2	36000	42000
		Ruang Tamu	7	4	3,5	28	1	1940	2	18000	14000
2	Lantai 2	Ruang SDM	8	8	3,5	64	1	2210	2,5	24000	32000
		Ruang Pengadaan dan Pergudangan	8	8	3,5	64	1	2210	2,5	24000	32000
		Ruang Pemasaran	8	7	3,5	56	1	2210	2,5	24000	28000
		Ruang Oprasional	8,5	6	3,5	51	1	2210	2,5	24000	25500
		Ruang Precast	8,5	6	3,5	51	1	2210	2,5	24000	25500
3	Lantai 3	Ruang SISMAN	9	7	3,5	63	1	2210	2,5	24000	31500
		Ruang SISFO	9	7	3,5	63	1	2210	2,5	24000	31500
		Musholah	11	7	3,5	77	2	1940	2	36000	38500
		Ruang BSP	11	5	3,5	55	1	2210	2,5	24000	27500
		Ruang Oprasional	11	5	3,5	55	1	2210	2,5	24000	27500

4	Lantai 4	Ruang Bendahara	12,5	7	3,5	87,5	1	2210	2,5	24000	43750
		Ruang Penagihan	12,5	7	3,5	87,5	1	2210	2,5	24000	43750
		Ruang Akuntansi	21	7	3,5	147	2	2210	2,5	48000	73500
5	Lantai 5	Ruang Direktur Utama	4	4	3,5	16	1	1940	2	18000	8000
		Ruang Direktur	4	4	3,5	16	1	1940	2	18000	8000
		Ruang Sekertariat	8	8	3,5	64	2	1940	2	36000	32000
		Ruang Kepala Bagian	11	8	3,5	88	2	1940	2	36000	44000
		Ruang Kepala Bagian	22	6	3,5	132	4	1940	2	72000	66000
6	Lantai 6	Ruang Rapat 1	12,5	8	3,5	100	2	2210	2,5	48000	50000
		Ruang Rapat 2	12,5	8	3,5	100	2	2210	2,5	48000	50000
		Ruang Rapat 3	11	6	3,5	66	2	2210	2,5	48000	33000
		Ruang Rapat 4	11	6	3,5	66	2	2210	2,5	48000	33000

4. Perhitungan lux gedung Kantor Pusat PT. Varia Usaha Beton sesudah konservasi

Tabel 3 Perhitungan Lux Gedung Kantor Pusat PT. Varia Usaha Beton Sesudah Konservasi

No.	Lantai	Ruangan	Dimensi			Luas (m ²)	Jumlah Titik		QI (Lumen)		Qt Terpasang (Lumen)	E Terhitung (lux)	E Standar (lux)
			P (m)	L (m)	T (m)		TL	CFL	TL	CFL			
1	Lantai 1	Lobi	15	12	3,5	180	34		3700		125800	363	350
		Ruang Rapat	12	7	3,5	84	14		3700		51800	321	300
		Ruang Tamu	7	4	3,5	28		5		1600	8000	149	150
		Toilet	5	5	3,5	25		14		910	12740	265	250
		Toilet	5	5	3,5	25		14		910	12740	265	250
2	Lantai 2	Ruang SDM	8	8	3,5	64	12		3700		44400	361	350
		Ruang Pengadaan dan Pergudangan	8	8	3,5	64	12		3700		44400	361	350
		Ruang Pemasaran	8	7	3,5	56	12		3700		44400	412	350
		Ruang Oprasional	8,5	6	3,5	51		22		1600	35200	359	350
		Ruang Precast	8,5	6	3,5	51		22		1600	35200	359	350
		Dapur	5	5	3,5	25		8		1600	12800	266	250
		Toilet	5	5	3,5	25		14		910	12740	265	250
3	Lantai 3	Ruang SISMAN	9	7	3,5	63		27		1600	43200	357	350
		Ruang SISFO	9	7	3,5	63		27		1600	43200	357	350
		Musholah	11	7	3,5	77		19		1600	30400	205	200
		Ruang BSP	11	5	3,5	55	10		3700		37000	350	350

		Ruang Oprasional	11	5	3,5	55	10		3700		37000	350	350
		Toilet	5	5	3,5	25		14		910	12740	265	250
4	Lantai 4	Ruang Bendahara	12,5	7	3,5	87,5	18		3700		66600	281	350
		Ruang Penagihan	12,5	7	3,5	87,5	18		3700		66600	281	350
		Ruang Akuntansi	21	7	3,5	147	28		3700		103600	366	350
		Toilet	5	5	3,5	25		14		910	12740	365	250
5	Lantai 5	Ruang Direktur Utama	4	4	3,5	16		7		1600	11200	364	350
		Ruang Direktur	4	4	3,5	16		7		1600	11200	364	350
		Ruang Sekertariat	8	8	3,5	64		28		1600	44800	364	350
		Ruang Kepala Bagian	11	8	3,5	88		38		1600	60800	359	350
		Ruang Kepala Bagian	22	6	3,5	132	24		3700		88800	350	350
		Toilet	5	5	3,5	25		14		910	12740	265	250
6	Lantai 6	Ruang Rapat 1	12,5	8	3,5	100		37		1600	59200	304	300
		Ruang Rapat 2	12,5	8	3,5	100		37		1600	59200	304	300
		Ruang Rapat 3	11	6	3,5	66		25		1600	40000	315	300
		Ruang Rapat 4	11	6	3,5	66		25		1600	40000	315	300
		Toilet	5	5	3,5	25		14		910	12740	265	250

5. Perhitungan kapasitas AC gedung Kantor Pusat PT. Varia Usaha Beton sesudah konservasi

Tabel 4 Perhitungan AC Gedung Kantor Pusat PT. Varia Usaha Beton Sesudah Konservasi

No.	Lantai	Ruangan	Dimensi			Luas (m ²)	Jumlah AC Terpasang	Daya (Watt)	Kapasitas AC Terpasang (PK)	BTU/Jam Terpasang	BTU/Jam di Butuhkan
			P (m)	L (m)	T (m)						
1	Lantai 1	Lobi	15	12	3,5	180	3	1930	3	8100	90000
		Ruang Rapat	12	7	3,5	84	2	1940	2	36000	42000
		Ruang Tamu	7	4	3,5	28	1	1940	2	18000	14000
2	Lantai 2	Ruang SDM	8	8	3,5	64	1	1930	3	27000	32000
		Ruang Pengadaan dan Pergudangan	8	8	3,5	64	1	1930	3	27000	32000
		Ruang Pemasaran	8	7	3,5	56	1	1530	2,5	24000	28000
		Ruang Oprasional	8,5	6	3,5	51	1	1530	2,5	24000	25500
		Ruang Precast	8,5	6	3,5	51	1	1530	2,5	24000	25500
3	Lantai 3	Ruang SISMAN	9	7	3,5	63	1	1930	3	27000	31500
		Ruang SISFO	9	7	3,5	63	1	1930	3	27000	31500
		Musholah	11	7	3,5	77	2	1940	2	36000	38500
		Ruang BSP	11	5	3,5	55	1	1530	2,5	24000	27500
		Ruang Oprasional	11	5	3,5	55	1	1530	2,5	24000	27500
4	Lantai 4	Ruang Bendahara	12,5	7	3,5	87,5	1	4180	5	45000	43750
		Ruang Penagihan	12,5	7	3,5	87,5	1	4180	5	45000	43750
		Ruang Akuntansi	21	7	3,5	147	2	1930	3	54000	73500

5	Lantai 5	Ruang Direktur Utama	4	4	3,5	16	1	520	1	9000	8000
		Ruang Direktur	4	4	3,5	16	1	520	1	9000	8000
		Ruang Sekertariat	8	8	3,5	64	2	1940	2	36000	32000
		Ruang Kepala Bagian	11	8	3,5	88	2	1940	2	36000	44000
		Ruang Kepala Bagian	22	6	3,5	132	4	1940	2	72000	66000
6	Lantai 6	Ruang Rapat 1	12,5	8	3,5	100	2	1530	2,5	48000	50000
		Ruang Rapat 2	12,5	8	3,5	100	2	1530	2,5	48000	50000
		Ruang Rapat 3	11	6	3,5	66	2	1530	2,5	48000	33000
		Ruang Rapat 4	11	6	3,5	66	2	1530	2,5	48000	33000

6. Data beban gedung Kantor Pusat PT. Varia Usaha Beton sebelum konservasi

Tabel 5 Data Beban Terpasang di Gedung Kantor Pusat PT. Varia Usaha Beton Sebelum Konservasi

	Group	Fasa	Jenis Lampu			Jenis Elektronik										Total Beban (Watt)	Total Arus (A)
			Lampu TL 36 Watt	Lampu CF 24 Watt	Lampu CF 15 Watt	AC 2,5 PK	AC 2 PK	Komputer	Printer	Speaker Pasif	Ampli	Proyektor	Kulkas	Dispenser	Exhaus Fan		
						2210 Watt	1940 Watt	426 Watt	30 Watt	140 Watt	200 Watt	270 Watt	90 Watt	300 Watt	30 Watt		
MDP Gedung Kantor Pusat PT. VUB	SDP Lt. 1	R	16	2	9	1	1			2					4	5181	27
		S	16	2	9	1	1			1		1			2	5251	28
		T	16	1	10	1	1			1	1				2	5172	28
	SDP Lt. 2	R	12	17	5	2		12	2						6	10591	55
		S	12	17	4	1		18	2				1			11042	58
		T	12	18	5	2		12	3			1				10555	56
	SDP Lt. 3	R	7	24	5	2		7								8249	43
		S	6	25	4	2		7								8230	43
		T	7	24	5		2	7						4		7829	42
	SDP Lt. 4	R	20		5	1		20	3							11455	59
		S	20		5	1		18	6					4		10813	57
		T	20		4	2		14								11004	59
	SDP Lt. 5	R	8	27	5		3	12	2						4	12059	62
		S	8	26	5		4	8								12091	64
		T	8	27	4		3	12								11864	63

	SDP Lt. 6	R	41	5	3				4	1	4				8449	44
		S	41	5	3				4	1					8449	45
		T	42	4	2				8	2					4	8208
Total Beban (Watt) dan Arus (A) MDP														R	55984	290
														S	55876	295
														T	54632	292

7. Data beban gedung Kantor Pusat PT. Varia Usaha Beton sudah konservasi

Tabel 6 Data Beban Terpasang di Gedung Kantor Pusat PT. Varia Usaha Beton Sesudah Konservasi

Group	Fasa	Jenis Lampu			Jenis Elektronik													Total Beban (Watt)	Total Arus (A)
		LED Tube 26 Watt	LED Bulb 14 Watt	LED Bulb 12 Watt	AC 5 PK	AC 3 PK	AC 2,5 PK	AC 2 PK	AC 1 PK	Komputer	Printer	Speaker Pasif	Ampli	Proyektor	Kulkas	Dispenser	Exhaus Fan		
					4180	1930	1530	1940 Watt	520 Watt	426 Watt	30 Watt	140 Watt	200 Watt	270 Watt	90 Watt	300 Watt	30 Watt		
SDP Lt. 1	R	16	2	9		1		1				2					4	4822	25
	S	16	2	9		1		1				1		1			2	4892	26
	T	16	1	10		1		1				1	1				2	4820	26
SDP Lt. 2	R	12	17	5		1	1			12	2					1	6	9722	50
	S	12	17	4			1			18	2							9856	52
	T	12	18	5		1	1			12	3				1			9376	50
SDP Lt. 3	R	7	24	5		1	1			8								7446	39
	S	6	25	4		1	1			8								7422	39
	T	7	24	5				2		5							4	6708	36
SDP Lt. 4	R	20		5	1					18	3							12518	65
	S	20		5	1					17								12002	63
	T	24		4		2				17	6						4	12074	64
SDP Lt. 5	R	8	27	5				2	1	13	2						4	10764	56
	S	8	26	5				3	1	9								10806	57

	T	8	27	4				3		10							10714	57	
SDP Lt. 6	R		42	5			3					5	1				6138	32	
	S		42	5			3					5	1				6138	32	
	T		42	4			2					6	2	4			4	6136	33
	Total Beban (Watt) dan Arus (A) MDP																R	51410	266
Total Beban (Watt) dan Arus (A) MDP																S	51116	270	
Total Beban (Watt) dan Arus (A) MDP																T	49828	266	

7. Katalog Lampu



The world's most efficient fluorescent lighting

MASTER TL5 High Efficiency Eco

This extremely efficient TL5 lamp (tube diameter 16 mm) saves considerable energy by simple lamp-for-lamp replacement. The TL5 HE Eco lamp offers excellent lumen maintenance and color rendering. Application areas vary from offices and industry to schools and retail environments.

Benefits

- Up to 10 % energy saving with simply changing the lamp
- The same quality of light as compared with MASTER TL5 HE lamps
- All benefits of regular TL5 lamps

Features

- High lamp efficacies up to 114 lm/W
- Up to 10% power reduction in comparison with standard MASTER TL5 HE lamps
- Fluorescent Super 80 light quality

Application

- Ideally suited for recessed, surface-mounted and suspended luminaires e.g. in offices, shops, schools, public buildings and industry (low ceiling), wherever high-quality, energy-efficient lighting is required

Warnings and Safety

- A reduction in energy consumption is only achieved with current-controlled gear.
- The lamps operate perfectly with power-controlled gear, but in that case the light output can be up to 10% higher.
- A lamp breaking is extremely unlikely to have any impact on your health. If a lamp breaks, ventilate the room for 30 minutes and remove the parts, preferably with gloves. Put them in a sealed plastic bag and take it to your local waste facilities for recycling. Do not use a vacuum cleaner.

MASTER TL5 High Efficiency Eco

Order Code	Full Product Name	Color Code	Color Designation	Correlated Color	LLMF
				Temperature (Nom)	20000 h Rated
927989883031	MASTER TL5 HE Eco 13-14W/830 UNP/40	830	Warm White (WW)	3000 K	88 %
927989884031	MASTER TL5 HE Eco 13-14W/840 UNP/40	840	Cool White (CW)	4000 K	90 %
927989884033	MASTER TL5 HE Eco 13-14W/840 TSL/40	840	Cool White (CW)	4000 K	90 %
927990983031	MASTER TL5 HE Eco 25-28W/830 UNP/40	830	Warm White (WW)	3000 K	90 %

Order Code	Full Product Name	Color Code	Color Designation	Correlated Color	LLMF
				Temperature (Nom)	20000 h Rated
927990984031	MASTER TL5 HE Eco 25-28W/840 UNP/40	840	Cool White (CW)	4000 K	90 %
927990984033	MASTER TL5 HE Eco 25-28W/840 TSL/40	840	Cool White (CW)	4000 K	90 %
927991180031	MASTER TL5 HE Eco 12-25W/830 UNP/40	830	Warm White (WW)	3000 K	90 %
927991184031	MASTER TL5 HE Eco 12-25W/840 UNP/40	840	Cool White (CW)	4000 K	90 %

Light Technical (2/2)

Order Code	Full Product Name	Luminous Efficacy (lumen/Watt)		Luminous Flux (Nom)	Luminous Flux (Rated)
		Max Lumen (Nom)	(rated) Efficacy (Nom)		
927989883031	MASTER TL5 HE Eco 13-14W/830 UNP/40	108 lm/W	92 lm/W	1250 lm	1150 lm
927989884031	MASTER TL5 HE Eco 13-14W/840 UNP/40	108 lm/W	92 lm/W	1250 lm	1150 lm
927989884033	MASTER TL5 HE Eco 13-14W/840 TSL/40	108 lm/W	92 lm/W	1250 lm	1150 lm
927990983031	MASTER TL5 HE Eco 25-28W/830 UNP/40	114 lm/W	103 lm/W	2900 lm	2600 lm
927990984031	MASTER TL5 HE Eco 25-28W/840 UNP/40	114 lm/W	103 lm/W	2900 lm	2600 lm

Order Code	Full Product Name	Luminous Efficacy (lumen/Watt)		Luminous Flux (Nom)	Luminous Flux (Rated)
		Max Lumen (Nom)	(rated) Efficacy (Nom)		
927990984033	MASTER TL5 HE Eco 25-28W/840 TSL/40	114 lm/W	103 lm/W	2900 lm	2600 lm
927991180031	MASTER TL5 HE Eco 12-25W/830 UNP/40	114 lm/W	103 lm/W	3650 lm	3250 lm
927991184031	MASTER TL5 HE Eco 12-25W/840 UNP/40	114 lm/W	103 lm/W	3650 lm	3250 lm

PHILIPS

Lighting



Product Description

TORNADO

The Helix range is a twist-shape compact fluorescent lamp, with optimal light distribution. It is available in 11W, 15W, 20W and 23W (25W), with lumen equivalence of 60W, 75W, 100W and 125W incandescent light bulb. It is also available in two color temperatures: warm white (2700K) and cool daylight (6500K). It is available in both 220-240V and 120-127V and able to operate under a wide voltage range (Power supply fluctuation). It consumes up to 80% less energy than the incandescent light bulb and lasts for 3 years.

Benefits

- Very compact size and wide range allowing easy replacement of most GLS lamps from 25 W up to 150 W
- More than 80% energy saving effect compared with incandescent lamps of similar light output
- Fewer lamp replacements. Fit & forget.

Features

- Spiral-shaped alternative to incandescent lamps
- High energy efficiency
- Long-life alternative to incandescent lamps

Application

- The Helix range is widely used to replace incandescent light bulb at all kinds of applications, especially where require intensive light output.
- It is not suitable for dimming and electronic devices

Warnings and Safety

- Breaking a lamp is extremely unlikely to have any impact on your health. If a lamp breaks, ventilate the room for 30 minutes and remove the parts, preferably with gloves. Put them in a closed plastic bag and take it to your local waste facilities for recycling. Do not use a vacuum cleaner.
- Compact fluorescent lamps have to be treated as special waste, they must be taken to your local waste facilities for recycling. The European Lighting Industry has set up an infrastructure, capable of recycling mercury, other metals, glass etc.

TORNADO

Order Code	Full Product Name	Cap-Base
929689858602	TORNADO 24W CDL 822 220-240V 1FF/6	822

Light Technical (1/2)

Order Code	Full Product Name	Chromaticity Coordinate X (Nom)	Chromaticity Coordinate Y (Nom)	Color Code	Color Designation
929689848005	TORNADO 15W WW E27 220-240V 1FF/6	463	420	E27	Warm White (WW)
929689848005	TORNADO 15W CDL E27 220-240V 1FF/6	313	337	865	Cool Daylight
929689848005	TORNADO 20W WW E27 220-240V 1FF/6	463	420	E27	Warm White (WW)
929689848005	TORNADO 20W CDL E27 220-240V 1FF/6	313	337	865	Cool Daylight
929689848006	TORNADO 24W WW E27 220-240V 1FF/6	463	420	E27	Warm White (WW)
929689848005	TORNADO 24W CDL E27 220-240V 1FF/6	313	337	865	Cool Daylight

Order Code	Full Product Name	Chromaticity Coordinate X (Nom)	Chromaticity Coordinate Y (Nom)	Color Code	Color Designation
929689858002	TORNADO 15W WW 822 220-240V 1FF/6	463	420	E27	Warm White (WW)
929689858002	TORNADO 15W CDL 822 220-240V 1FF/6	313	337	865	Cool Daylight
929689858002	TORNADO 20W WW 822 220-240V 1FF/6	463	420	E27	Warm White (WW)
929689858002	TORNADO 20W CDL 822 220-240V 1FF/6	313	337	865	Cool Daylight
929689858002	TORNADO 24W WW 822 220-240V 1FF/6	463	420	E27	Warm White (WW)
929689858002	TORNADO 24W CDL 822 220-240V 1FF/6	313	337	865	Cool Daylight

Light Technical (2/2)

Order Code	Full Product Name	Correlated Color Temperature (Nom)	Color Rendering Index (Nom)	Efficacy (rated) (Nom)	Luminous Flux (Nom)	Luminous Flux (Rated)
929689848005	TORNADO 15W WW E27 220-240V 1FF/6	2700 K	82	65 lm/W	950 lm	950 lm
929689848005	TORNADO 15W CDL E27 220-240V 1FF/6	6500 K	80	67 lm/W	900 lm	900 lm
929689848006	TORNADO 24W WW E27 220-240V 1FF/6	2700 K	82	65 lm/W	1250 lm	1250 lm

Order Code	Full Product Name	Correlated Color Temperature (Nom)	Color Rendering Index (Nom)	Efficacy (rated) (Nom)	Luminous Flux (Nom)	Luminous Flux (Rated)
929689848005	TORNADO 20W WW E27 220-240V 1FF/6	2700 K	82	65 lm/W	1150 lm	1150 lm
929689848005	TORNADO 20W CDL E27 220-240V 1FF/6	6500 K	80	67 lm/W	1200 lm	1200 lm
929689848006	TORNADO 24W WW E27 220-240V 1FF/6	2700 K	82	67 lm/W	1550 lm	1550 lm



An energy saver combines energy saving & a compact design

Economy Twister

Compact Entry Spiral shape energy saving lamp, starts bright light rapidly and fits everywhere. It saves your money due to its low energy consumption. With a comprehensive range of wattages, it enables easy replacement of most incandescent lamp all the way

Benefits

- "Value for Money" compact design Energy Saver
- Save your money with long life-time and high energy efficiency compare to Incandescent lamp
- Flicker-free start & Fast run up

Features

- Spiral Shape, Long-Life and Energy saving alternative to Incandescent lamps
- Fast Run-up
- Recommended ambient temperature range to ensure almost constant light output (>90%): between 0°C and +50°C

Application

- Designed for incandescent lamp replacement in consumer applications where the lamp is not directly visible; especially suitable for use in (indoor) functional areas * Enclosed fixtures required for outdoor applications
- Not suitable for use with dimmers or electronic gear

Economy Twister

Order Code	Full Product Name	Lumen Maintenance 2000 h (Nom)	Luminous Efficacy (rated) (Nom)	Luminous Flux (Nom)	Luminous Flux (Rated) (Nom)
929689218302	Economy Twister BW WW E27 220-240V 1P/0/G	88 %	62 lm/W	500 lm	500 lm
929689218401	Economy Twister BW CDL E27 220-240V 1P/0/G	88 %	59 lm/W	475 lm	475 lm
929689218501	Economy Twister 12W WW E27 220-240V 1P/0/G	88 %	61 lm/W	741 lm	741 lm
929689218601	Economy Twister 12W CDL E27 1P/0/G	88 %	58 lm/W	700 lm	700 lm
929689218701	Economy Twister 15W WW E27 220-240V 1P/0/G	88 %	65 lm/W	970 lm	970 lm
929689218801	Economy Twister 15W CDL E27 1P/0/G	88 %	61 lm/W	900 lm	900 lm

Order Code	Full Product Name	Lumen Maintenance 2000 h (Nom)	Luminous Efficacy (rated) (Nom)	Luminous Flux (Nom)	Luminous Flux (Rated) (Nom)
929689218901	Economy Twister 20W WW E27 220-240V 1P/0/G	88 %	65 lm/W	1250 lm	1250 lm
929689219001	Economy Twister 20W CDL E27 1P/0/G	88 %	61 lm/W	1200 lm	1200 lm
929689238401	Economy Twister BW CDL E14 220-240V 1P/0/G	88 %	59 lm/W	475 lm	475 lm
929689238501	Economy Twister 12W WW E14 220-240V 1P/0/G	88 %	61 lm/W	741 lm	741 lm
929689238602	Economy Twister 12W CDL E14 1P/0/G	88 %	58 lm/W	700 lm	700 lm
929689258201	Economy Twister 23W CDL E27 1P/0/G	88 %	63 lm/W	1450 lm	1450 lm

Mechanical and Housing

Order Code	Full Product Name	Bulb Shape
929689202403	Economy Twister 23W CDL E27 HV 1P/0/G	-
929689258101	Economy Twister 23W WW E27 220-240V 1P/0/G	Spiral
929689218302	Economy Twister BW WW E27 220-240V 1P/0/G	Spiral
929689218401	Economy Twister BW CDL E27 220-240V 1P/0/G	Spiral
929689218501	Economy Twister 12W WW E27 220-240V 1P/0/G	Spiral
929689218601	Economy Twister 12W CDL E27 1P/0/G	Spiral
929689218701	Economy Twister 15W WW E27 220-240V 1P/0/G	Spiral

Order Code	Full Product Name	Bulb Shape
929689218801	Economy Twister 15W CDL E27 1P/0/G	Spiral
929689218901	Economy Twister 20W WW E27 220-240V 1P/0/G	Spiral
929689219001	Economy Twister 20W CDL E27 1P/0/G	Spiral
929689238401	Economy Twister BW CDL E14 220-240V 1P/0/G	Spiral
929689238501	Economy Twister 12W WW E14 220-240V 1P/0/G	Spiral
929689238602	Economy Twister 12W CDL E14 1P/0/G	Spiral
929689258201	Economy Twister 23W CDL E27 1P/0/G	Spiral



© 2021 Signify Holding. All rights reserved. Signify does not give any representation or warranty as to the accuracy or completeness of the information included herein and shall not be liable for any action in reliance thereon. The information presented in this document is not intended as any commercial offer and does not form part of any quotation or contract, unless otherwise agreed by Signify. All trademarks are owned by Signify Holding or their respective owners.

www.lighting.philips.com
2021, April 26 - data subject to change



The new generation of energy-saving T5 tube lighting

MASTER LEDtube InstantFit HF T5

Philips MASTER LEDtube InstantFit T5 integrates a LED light source into a traditional fluorescent form factor. Its unique design creates a perfectly uniform visual appearance which cannot be distinguished from traditional fluorescent. The Philips MASTER LEDtube InstantFit T5 is the ideal solution for customers who have higher light output requirements and want to maximize value over lifetime. Full energy savings & longer lifetime result in attractive payback times and TCO benefits.

Benefits

- Reduced operational cost thanks to lower energy consumption
- Lower maintenance cost thanks to 2-3 times longer lifetime than normal fluorescent tubes
- Fastest and easiest way to upgrade existing luminaire to LED technology, with a 100%- safe installation process

Features

- Retrofit replacement of existing T5 lamps on HF ballast installations
- HF compatibility: no wires to replace, no hassle changing drivers; our InstantFit solution works with High Frequency electronic ballasts, making it easy and safe for all installation methods
- Electronic Pin safety: with PHILIPS products you can safely touch the other end-cap when installing the tube. The integrated driver is also safely isolated from touchable parts. Philips LED tubes adhere to all UL and IEC pin safety requirements

Application

- The ideal solution for demanding applications with a need for extra energy savings: office, school, retail

MASTER LEDtube InstantFit HF T5

Order Code	Full Product Name	Beam		Correlated Color		Color Rendering Index (Nom)
		Angle (Nom)	Color Code	Temperature (Nom)	Temperature (Nom)	
929001346202	Master LEDtube HF 1500mm UO 36W 865 TS	100°	865	6500 K	80	
929001390702	Master LEDtube HF 600mm HE BW 830 TS	200°	830	3000 K	83	
929001390802	Master LEDtube HF 600mm HE BW 840 TS	200°	840	4000 K	83	
929001390902	Master LEDtube HF 600mm HE BW 865 TS	200°	865	6500 K	83	
929001391002	Master LEDtube HF 1200mm HE 16.5W 830 TS	200°	830	3000 K	83	
929001391102	Master LEDtube HF 1200mm HE 16.5W 840 TS	200°	840	4000 K	83	
929001391202	Master LEDtube HF 1200mm HE 16.5W 865 TS	200°	865	6500 K	83	
929001391302	Master LEDtube HF 1500mm HE 20W 830 TS	200°	830	3000 K	83	

Order Code	Full Product Name	Beam		Correlated Color		Color Rendering Index (Nom)
		Angle (Nom)	Color Code	Temperature (Nom)	Temperature (Nom)	
929001391402	Master LEDtube HF 1500mm HE 20W 840 TS	200°	840	4000 K	83	
929001391502	Master LEDtube HF 1500mm HE 20W 865 TS	200°	865	6500 K	83	
929002352002	Master LEDtube HF 1200mm HO 26W 830 TS OE	200°	830	3000 K	80	
929002352102	Master LEDtube HF 1200mm HO 26W 840 TS OE	200°	840	4000 K	80	
929002352202	Master LEDtube HF 1200mm HO 26W 865 TS OE	200°	865	6500 K	80	
929002352302	Master LEDtube HF 1500mm HO 26W 830 TS OE	200°	830	3000 K	80	
929002352402	Master LEDtube HF 1500mm HO 26W 840 TS OE	200°	840	4000 K	80	
929002352502	Master LEDtube HF 1500mm HO 26W 865 TS OE	200°	865	6500 K	80	

Light Technical (2/2)

Order Code	Full Product Name	Luminous Flux (Nom)
929001346202	Master LEDtube HF 1500mm UO 36W 830 TS	5200 lm
929001346202	Master LEDtube HF 1500mm UO 36W 840 TS	5600 lm
929001346202	Master LEDtube HF 1500mm UO 36W 865 TS	5600 lm
929001390702	Master LEDtube HF 600mm HE BW 830 TS	1000 lm
929001390802	Master LEDtube HF 600mm HE BW 840 TS	1050 lm
929001390902	Master LEDtube HF 600mm HE BW 865 TS	1050 lm
929001391002	Master LEDtube HF 1200mm HE 16.5W 830 TS	2300 lm
929001391102	Master LEDtube HF 1200mm HE 16.5W 840 TS	2500 lm
929001391202	Master LEDtube HF 1200mm HE 16.5W 865 TS	2500 lm

Order Code	Full Product Name	Luminous Flux (Nom)
929001391302	Master LEDtube HF 1500mm HE 20W 830 TS	2800 lm
929001391402	Master LEDtube HF 1500mm HE 20W 840 TS	3000 lm
929001391502	Master LEDtube HF 1500mm HE 20W 865 TS	3000 lm
929002352002	Master LEDtube HF 1200mm HO 26W 830 TS OE	3700 lm
929002352102	Master LEDtube HF 1200mm HO 26W 840 TS OE	3900 lm
929002352202	Master LEDtube HF 1200mm HO 26W 865 TS OE	3900 lm
929002352302	Master LEDtube HF 1500mm HO 26W 830 TS OE	3700 lm
929002352402	Master LEDtube HF 1500mm HO 26W 840 TS OE	3900 lm
929002352502	Master LEDtube HF 1500mm HO 26W 865 TS OE	3900 lm

Mechanical and Housing

Order Code	Full Product Name	Bulb Finish
929001346202	Master LEDtube HF 1500mm UO 36W 830 TS	Frosted
929001346202	Master LEDtube HF 1500mm UO 36W 840 TS	Frosted
929001346202	Master LEDtube HF 1500mm UO 36W 865 TS	Frosted
929001390702	Master LEDtube HF 600mm HE BW 830 TS	-
929001390802	Master LEDtube HF 600mm HE BW 840 TS	-
929001390902	Master LEDtube HF 600mm HE BW 865 TS	-

Order Code	Full Product Name	Bulb Finish
929001391002	Master LEDtube HF 1200mm HE 16.5W 830 TS	-
929001391102	Master LEDtube HF 1200mm HE 16.5W 840 TS	-
929001391202	Master LEDtube HF 1200mm HE 16.5W 865 TS	-
929001391302	Master LEDtube HF 1500mm HE 20W 830 TS	-
929001391402	Master LEDtube HF 1500mm HE 20W 840 TS	-
929001391502	Master LEDtube HF 1500mm HE 20W 865 TS	-



Provides soft, warm light and 3 wattage settings

LED 3-Way

Philips LED A-shape light bulb provides omni-directional light perfect for general room lighting. This lamp creates a comfortable atmosphere by providing 3 wattage levels of soft, white light that will not fade fabrics or furnishings.

Benefits

- Long life -- lowers maintenance costs by reducing re-lamp frequency
- Excellent color consistency with high 80+ color rendering (CRI)
- 3-Way switching to get exactly the right amount of light when you need it

Features

- Light equivalent to 3 standard incandescent bulb outputs when used with a standard 3-way socket or luminaire
- 25,000-hour rated average life
- Instant on
- ENERGY STAR qualified
- Emits virtually no UV/IR light in the beam

Application

- Hotels/Motels
- Residential & Assisted Living

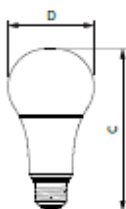
LED 3-Way

Versions



Single Contact Medium Screw A21
(A21) Frosted

Dimensional drawing



Product	D	C
14AZ(LED/927/F)/E26/2WAY ND 4/1FB T20	70.6 mm	123.1 mm
18.5AZ(LED/927/F)/E26/3WAY ND 4/1FB T20	70.6 mm	123.1 mm
14AZ(LED/927/F)/E26/2WAY ND 4/1FB T20	70.6 mm	123.1 mm
18.5AZ(LED/927/F)/E26/3WAY ND 4/1FB T20	70.6 mm	123.1 mm

Controls and Dimming	
Dimmable	No
Operating and Electrical	
Input Frequency	60 Hz
Voltage (Nom)	120 V
Starting Time (Nom)	0.5 s
General Information	
Cap-Base	E26
Switching Cycle	50000X
Light Technical	
Beam Angle (Nom)	250 °
Color Code	927
Correlated Color Temperature (Nom)	2700 K
Color Rendering Index (Nom)	90
Life At End Of Nominal Lifetime (Nom)	70 %
Mechanical and Housing	
Bulb Finish	Frosted
Bulb Shape	A21 (A21)

Operating and Electrical

Order Code	Full Product Name	Wattage Equivalent	Power (Rated) (Nom)
929002285003	14AZ(LED/927/F)/E26/2WAY ND 4/1FB T20	100-60-40 W	14, 8, 5 W
929002285005	14AZ(LED/927/F)/E26/2WAY ND 4/1FB T20	100-60-40 W	14, 8, 5 W
929002285103	18.5AZ(LED/927/F)/E26/3WAY ND 4/1FB T20	150-100-50 W	18.5, 12, 6 W
929002285105	18.5AZ(LED/927/F)/E26/3WAY ND 4/1FB T20	150-100-50 W	18.5, 12, 6 W

General Information

LED 3-Way

Order Code	Full Product Name	Nominal Lifetime (Nom)
929002285003	14A2/(LED/927/F)/E26/2WAY ND 4/FR T20	25000 h
929002285005	14A2/(LED/927/F)/E26/2WAY ND 4/FR T20	25000 h

Order Code	Full Product Name	Nominal Lifetime (Nom)
929002285103	18.5A2/(LED/927/F)/E26/2WAY ND 4/FR T20	15000 h
929002285105	18.5A2/(LED/927/F)/E26/2WAY ND 4/FR T20	15000 h

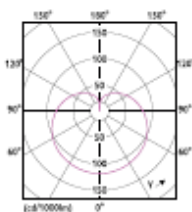
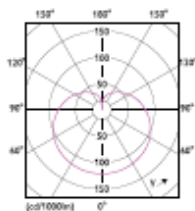
Light Technical

Order Code	Full Product Name	Luminous Flux (Nom)
929002285003	14A2/(LED/927/F)/E26/2WAY ND 4/FR T20	1600-800-450 lm
929002285005	14A2/(LED/927/F)/E26/2WAY ND 4/FR T20	1600-800-450 lm

Order Code	Full Product Name	Luminous Flux (Nom)
929002285103	18.5A2/(LED/927/F)/E26/2WAY ND 4/FR T20	2150-1600-620 lm
929002285105	18.5A2/(LED/927/F)/E26/2WAY ND 4/FR T20	2150-1600-620 lm

Temperature

Order Code	Full Product Name	T-Case Maximum (Nom)
929002285003	14A2/(LED/927/F)/E26/2WAY ND 4/FR T20	90 °C
929002285005	14A2/(LED/927/F)/E26/2WAY ND 4/FR T20	90 °C
929002285103	18.5A2/(LED/927/F)/E26/2WAY ND 4/FR T20	95 °C
929002285105	18.5A2/(LED/927/F)/E26/2WAY ND 4/FR T20	95 °C



© 2021 Signify Holding. All rights reserved. Signify does not give any representation or warranty as to the accuracy or completeness of the information included herein and shall not be liable for any action in reliance thereon. The information presented in this document is not intended as any commercial offer and does not form part of any quotation or contract, unless otherwise agreed by Signify. All trademarks are owned by Signify Holding or their respective owners.

www.lighting.philips.com
2021, February 28 – data subject to change



A simple LED for everyday use

Ecohome

EcoHome LEDbulbs are compatible with existing fixtures with a E27 holder and are designed for retrofit replacement of incandescent, halogen and energy saving bulbs. They deliver huge energy savings and minimize initial investment.

Benefits

- Up to 90% energy saving compared with traditional incandescent lamps
- Lower maintenance costs
- Low initial investment

Features

- Easy retrofit with existing E27
- Long lifetime
- Non-Dimmable
- UV- and IR-free light

Application

- Domestic applications

Ecohome

Order Code	Full Product Name	Nominal Lifetime (Nom)
Q2900231237	EcoHome LEDSub 10W E27 3000K V 1CT/12MX	5000 h
Q2900231247	EcoHome LEDSub 10W E27 6500K V 1CT/12MX	5000 h
Q29002314497	EcoHome LEDSub 8W E27 3000K V 1FF/12NL	6000 h
Q29002314594	EcoHome LEDSub 8W E27 6500K V 1FF/12NL	6000 h
Q29002314595	EcoHome LEDSub 8W E27 6500K V 2FF/12NL	6000 h
Q29002314596	EcoHome LEDSub 8W E27 6500K V 3FF/12NL	6000 h

Order Code	Full Product Name	Nominal Lifetime (Nom)
Q29002314597	EcoHome LEDSub 8W E27 6500K V 1FF/12NL	6000 h
Q29002316497	EcoHome LEDSub 6W E27 3000K V 1FF/12NL	6000 h
Q29002316597	EcoHome LEDSub 6W E27 6500K V 1FF/12NL	6000 h
Q29002316697	EcoHome LEDSub 10W E27 3000K V 1FF/12NL	6000 h
Q29002316697	EcoHome LEDSub 10W E27 6500K V 1FF/12NL	6000 h
Q29002316547	EcoHome LEDSub 16W E27 6500K V 1FF/20AR	10000 h

Light Technical

Order Code	Full Product Name	Correlated Color		
		Color Code	Temperature (Nom)	Luminous Flux (Nom)
Q29001954811	EcoHome LEDSub 10W E27 6500K V 1CT/4BAR	865	6500 K	720 lm
Q29001954812	EcoHome LEDSub 10W E27 6500K V 2FF/6AR	865	6500 K	720 lm
Q29001954841	EcoHome LEDSub 10W E27 6500K V 2FF/10AR	865	6500 K	720 lm
Q29001954811	EcoHome LEDSub 10W E27 6500K V 1FF/20AR	865	6500 K	720 lm
Q29001952111	EcoHome LEDSub 7W E27 3000K V 1CT/4BAR	830	3000 K	500 lm
Q29001952112	EcoHome LEDSub 7W E27 3000K V 2FF/6AR	830	3000 K	500 lm
Q29001952148	EcoHome LEDSub 7W E27 3000K V 2FF/10AR	830	3000 K	500 lm
Q29001952171	EcoHome LEDSub 7W E27 3000K V 1FF/20AR	830	3000 K	500 lm
Q29001952171	EcoHome LEDSub 7W E27 6500K V 1CT/4BAR	865	6500 K	540 lm
Q29001952172	EcoHome LEDSub 7W E27 6500K V 2FF/6AR	865	6500 K	540 lm
Q29001952148	EcoHome LEDSub 7W E27 6500K V 2FF/10AR	865	6500 K	540 lm
Q29001952171	EcoHome LEDSub 7W E27 6500K V 1FF/20AR	865	6500 K	540 lm
Q29001952311	EcoHome LEDSub 10W E27 3000K V 1CT/4BAR	830	3000 K	680 lm
Q29001952312	EcoHome LEDSub 10W E27 3000K V 2FF/6AR	830	3000 K	680 lm
Q29001952341	EcoHome LEDSub 10W E27 3000K V 2FF/10AR	830	3000 K	680 lm
Q29001952371	EcoHome LEDSub 10W E27 3000K V 1FF/20AR	830	3000 K	680 lm
Q29002312597	EcoHome LEDSub 12W E27 3000K V 1FF/12NL	830	3000 K	910 lm
Q29002312697	EcoHome LEDSub 12W E27 6500K V 1FF/12NL	865	6500 K	910 lm
Q29002312703	EcoHome LEDSub 14W E27 3000K V 1FF/12MX	830	3000 K	1310 lm

Order Code	Full Product Name	Correlated Color		
		Color Code	Temperature (Nom)	Luminous Flux (Nom)
Q29002312871	EcoHome LEDSub 14W E27 6500K V 1CT/12MX	865	6500 K	1310 lm
Q29001954911	EcoHome LEDSub 12W E27 3000K V 1CT/4BAR	830	3000 K	900 lm
Q29001954912	EcoHome LEDSub 12W E27 3000K V 2FF/6AR	830	3000 K	900 lm
Q29001954941	EcoHome LEDSub 12W E27 3000K V 2FF/10AR	830	3000 K	900 lm
Q29001954971	EcoHome LEDSub 12W E27 3000K V 1FF/20AR	830	3000 K	900 lm
Q29001955011	EcoHome LEDSub 12W E27 6500K V 1CT/4BAR	865	6500 K	960 lm
Q29001955012	EcoHome LEDSub 12W E27 6500K V 2FF/6AR	865	6500 K	960 lm
Q29001955048	EcoHome LEDSub 12W E27 6500K V 2FF/10AR	865	6500 K	960 lm
Q29001955071	EcoHome LEDSub 12W E27 6500K V 1FF/20AR	865	6500 K	960 lm
Q29002299612	EcoHome LEDSub 14W E27 3000K V 2FF/6AR	830	3000 K	1150 lm
Q29002299671	EcoHome LEDSub 14W E27 3000K V 1FF/20AR	830	3000 K	1150 lm
Q29002299912	EcoHome LEDSub 14W E27 6500K V 2FF/6AR	865	6500 K	1250 lm
Q29002299971	EcoHome LEDSub 14W E27 6500K V 1FF/20AR	865	6500 K	1250 lm
Q29002312171	EcoHome LEDSub 8W E27 3000K V 1CT/12MX	830	3000 K	450 lm
Q29002312271	EcoHome LEDSub 8W E27 6500K V 1CT/12MX	865	6500 K	450 lm
Q29002312271	EcoHome LEDSub 10W E27 3000K V 1CT/12MX	830	3000 K	800 lm
Q29002312471	EcoHome LEDSub 10W E27 6500K V 1CT/12MX	865	6500 K	800 lm
Q29002314497	EcoHome LEDSub 8W E27 3000K V 1FF/12NL	830	3000 K	550 lm
Q29002314594	EcoHome LEDSub 8W E27 6500K V 1FF/12NL	865	6500 K	550 lm

8. Dokumentasi



